

Public Document Pack

MEETING: OVERVIEW AND SCRUTINY COMMITTEE
(CHILDREN'S SERVICES)

DATE: Tuesday, 27 January 2015

TIME: 6.30 p.m.

VENUE: Town Hall, Bootle

Member

Councillor Brennan (Chair)
Councillor Bradshaw (Vice-Chair)
Councillor Ball
Councillor Hands
Councillor Keith
Councillor Murphy
Councillor McKinley
Councillor Preece
Councillor Thompson
Councillor Webster
Canon Roger Driver
Fr. D. Seddon
Mr David McCaughrean
Mrs Carol-Anna Ryan-Palmer
Ms Libby Kitt
Ms Jenny Southern

Substitute

Councillor Veidman
Councillor O'Brien
Councillor Hartill
Councillor Booth
Councillor M. Fearn
Councillor Page
Councillor Byrom
Councillor Jo Barton
Councillor P. Maguire
Councillor Carr

COMMITTEE OFFICER: Mike Morris Senior Democratic Services Officer
Telephone: 0151 934 2045
Fax: 0151 934 2034
E-mail: mike.morris@sefton.gov.uk

If you have any special needs that may require arrangements to facilitate your attendance at this meeting, please contact the Committee Officer named above, who will endeavour to assist.

This page is intentionally left blank

A G E N D A

1. **Apologies for Absence**
2. **Declarations of Interest**

Members are requested to give notice of any disclosable pecuniary interest which is not already included in their Register of Members' Interests and the nature of that interest, relating to any item on the agenda in accordance with the Members Code of Conduct, before leaving the meeting room during the discussion on that particular item.
3. **Minutes of Previous Meeting** (Pages 5 - 10)

Minutes of the meeting held on 18 November 2014.
4. **Corporate Parenting Report - Annual Report 2014/15** (Pages 11 - 24)

Report of the Director of Corporate Services
5. **School Organisation and School Places** (Pages 25 - 134)

Report of the Director of Young People and Families
6. **Ofsted Annual Report for the North West 2013/14** (Pages 135 - 146)

Report attached. The Director of Young People and Families will comment on the report.
7. **Cabinet Member Report** (Pages 147 - 152)

Report of the Director of Corporate Services.
8. **Work Programme Key Decision Forward Plan** (Pages 153 - 162)

Report of the Director of Corporate Services.

This page is intentionally left blank

OVERVIEW AND SCRUTINY COMMITTEE (CHILDREN'S SERVICES)

MEETING HELD AT THE TOWN HALL, SOUTHPORT
ON TUESDAY 18TH NOVEMBER, 2014

Overview
& Scrutiny



PRESENT: Councillor Brennan (in the Chair)

Councillors Ball, Keith, McKinley, Webster, Booth,
Jo Barton, P. Maguire, Mr David McCaughrean,
Mrs Carol-Anna Ryan-Palmer and Healthwatch
representative, Ms. Libby Kitt.

Also Present: Councillor Bennett.

11. APOLOGIES FOR ABSENCE

Apologies for absence were received from Councillors Bradshaw, Hands, Murphy, Preece and Thompson.

An apology for absence was also received from Substitute Member Councillor O'Brien.

12. DECLARATIONS OF INTEREST

No declarations of interest were made.

13. MINUTES

RESOLVED:

That the Minutes of the meeting held on 23 September 2014 be confirmed as a correct record.

14. SPECIAL EDUCATIONAL NEEDS REFORMS

The Committee received a presentation from the Head of Learning and Support, Mr. Mike McSorley, in relation to the Special Educational Needs Reforms. The presentation focused on the implementation of reforms in relation to special educational needs and disability in Sefton and the key headlines were presented as follows:-

- That the Department for Education state "Our vision for children and young people with special needs is the same as for all children and young people – that they achieve well in their early years, at school and in college; lead happy and fulfilled lives; and have choice and control".
- The Special Educational Needs (SEN) and Disability Reform Journey.
- The SEN Reform and the justification for change.
- The SEN Code of Practice – overview
- The SEN Code of Practice – principles

Agenda Item 3

OVERVIEW AND SCRUTINY COMMITTEE (CHILDREN'S SERVICES)-
TUESDAY 18TH NOVEMBER, 2014

- New SEN Code of Practice – Sefton's aims

Arising from the presentation the following issues were raised:

- The option of a personal budget for families and young people with a plan to extend choice and control over their support – is there an assessment that the Local Authority carry out to ensure that the families who choose the option of a personal budget are using the budget in the most efficient and effective way? Response: The individual Education, Health and Care Plan will set out the outcomes required by the individual. There is an assessment process whereby the parent/carer/family would need to illustrate that they can deliver the outcomes set out in the plan in an efficient and effective way.
- Is there a process relating to potential disputes about personal budgets. Response: There is a process to address disputes: there are three phases in attempting to resolve disputes locally before reaching the tribunal stage.
- Does the legislation include Higher Education Institutes? Response: The Head of Learning and Support undertook to investigate this matter further.

RESOLVED:

That the Head of Learning and Support be thanked for his informative presentation.

15. TROUBLED FAMILIES PROGRAMME

Further to Minute No. 20 of 24 September 2013, the Committee considered a presentation by Mr. Colin Pettigrew, Director of Young People and Families and Mr. Mike Hanrahan, Troubled Families Co-ordinator, updating on the above Programme. The presentation focused on the troubled families programme in Sefton and the key headlines were presented as follows:-

- “The Troubled Families Programme aims to change the way services are run, save taxpayers money and turn around the lives of some of the hardest to help in the country”.
 - Children back in school
 - Youth crime and anti-social behaviour reduced
 - Adults better able to work
- What we are trying to achieve
- Payment by Results
- Finance Summary
- Governance
- Results to date
- Expanded Programme
- Development Areas

Agenda Item 3

OVERVIEW AND SCRUTINY COMMITTEE (CHILDREN'S SERVICES)-
TUESDAY 18TH NOVEMBER, 2014

Arising from the presentation the following issues were raised:

- Why are families not represented on the Steering Group?
Response: Currently families are not represented on the Steering Group. However, the Steering Group is evolving and in that respect the suggestion to include a Troubled Family representative on the Steering Group will be reported at its next meeting.
- During the next 5 years it is anticipated that there will be approximately 2070 Troubled Families in Sefton. How are they identified and are all the agencies and schools aware of the process? Response: There is a process in place through the Common Assessment Framework and a nomination form that all the agencies are aware of. There are also seven officers that work across seven schools in supporting the Troubled Families project. The Service Manager for Early Intervention and Prevention (Family Support) undertook to provide the Committee with a report relating to the nomination and assessment process of identifying a Troubled Family.

RESOLVED: That

- (1) Mr. Colin Pettigrew, Director of Young People and Families, and Mr. Mike Hanrahan, Troubled Families Co-ordinator, be thanked for their informative presentation;
- (2) the Director of Young People and Families be requested to refer the suggestion of an additional member being included on the Steering Group representing the Troubled Families cohort, to the next meeting of the Steering Group; and
- (3) the Director of Young People and Families be requested to submit a report to a future meeting of this Committee in relation to the nomination and assessment process of identifying a Troubled Family.

16. CABINET MEMBER REPORT

The Committee considered the report of the Director of Corporate Services submitting the most recent report of the Cabinet Member for Children, Schools, Families and Leisure for the November 2014 period.

The Cabinet Member Update Report outlined information on the following:-

- Child Sexual Exploitation in Rotherham - Report of Professor Jay.
- Changes to Children's Home Regulations and Amendments.
- Conversion of St. Michael's High School to a Sponsored Academy.
- Progress of Schools led by Interim Executive Boards.
- GCSE Results 2014.
- Inspection Outcomes.

Agenda Item 3

OVERVIEW AND SCRUTINY COMMITTEE (CHILDREN'S SERVICES)-
TUESDAY 18TH NOVEMBER, 2014

RESOLVED:

That the report be noted.

17. WORK PROGRAMME KEY DECISION FORWARD PLAN

The Committee considered the report of the Director of Corporate Services in relation to the Committee's programme of work and submitting the latest Key Decision Forward Plan. There were no Key Decisions within the latest Key Decision Forward Plan which fell under the remit of the Committee on this occasion.

The report referred to the Committee's appointment of Ms. Libby Kitt as a Healthwatch representative to serve on this Committee in a non-voting capacity. The report indicated that Healthwatch had nominated Ms. Jenny Southern as a second representative to serve on this Committee in a non-voting capacity.

The report also referred to a proposed list of key questions to be put to the headteachers of the 19 secondary schools in connection with the School Performance Review.

The report also set out the revised Work Programme for 2014/15.

Councillor Keith brought the Committee's attention to concerns regarding a social housing provider's hostel and the level of anti-social behaviour from some of the 16 – 25 year olds residing at the hostel. Councillor Keith raised the issue of safeguarding and drew Members' attention to an incident report that she had written and requested that the report be passed to the relevant Cabinet Members for their attention.

RESOLVED: That

- (1) the fact that there were no items for pre-scrutiny from the current Key Decision Forward Plan be noted;
- (2) confirmation of the appointment of Ms. Jenny Southern, Healthwatch representative, as an advisory Member on the Committee be agreed;
- (3) in relation to the School Performance Working Group, the Director of Young People and Families be requested to approach the co-ordinator of the Sefton Association of Secondary Heads with a view to the School Performance Working Group being invited to speak with them regarding the proposed list of key questions drafted for Head teachers;
- (4) the submitted work programme for this Committee be agreed subject to the following items being included on the work programme:-
 - Ofsted Inspection – Early Years Provision and Day Nursery Provision;

Agenda Item 3

OVERVIEW AND SCRUTINY COMMITTEE (CHILDREN'S SERVICES)-
TUESDAY 18TH NOVEMBER, 2014

- An explanation of the process and level of Inspection of registered and unregistered homes and hostels;
 - The nomination and assessment process undertaken in the identification of a Troubled Family; and
- (5) the Director of Young People and Families be requested to forward the incident report submitted by Councillor Keith to the Cabinet Member - Children, Schools, Families and Leisure, the Cabinet Member - Communities and Environment and the Cabinet Member - Older People and Health.

18. ERICK MAINA

The Chair, Councillor Brennan referred to the recent sad passing of Erick Maina, who was a student at Maricourt Catholic High School, Maghull. The Chair requested that the Director of Young People and Families send the Committee's condolences to Erick's family and friends.

This page is intentionally left blank

Report to: Overview and Scrutiny Committee (Children’s Services) **Date of Meeting:** 27 January 2015

Subject: Corporate Parenting Board – Annual Report 2014/15 **Wards Affected:** All

Report of: Director of Corporate Services

Is this a Key Decision? No **Is it included in the Forward Plan?** No
Exempt/Confidential No

Purpose/Summary

To submit to the Committee the Corporate Parenting Board Annual Report 2014/15.

Recommendation

Members are invited to comment on the Annual Report .

How does the decision contribute to the Council’s Corporate Objectives?

	<u>Corporate Objective</u>	<u>Positive Impact</u>	<u>Neutral Impact</u>	<u>Negative Impact</u>
1	Creating a Learning Community		√	
2	Jobs and Prosperity		√	
3	Environmental Sustainability		√	
4	Health and Well-Being	√		
5	Children and Young People	√		
6	Creating Safe Communities	√		
7	Creating Inclusive Communities	√		
8	Improving the Quality of Council Services and Strengthening Local Democracy	√		

Agenda Item 4

Reasons for the Recommendation:

The 2012/13 Annual Report was submitted to the Committee on 24 September 2013 and the Director of Young People and Families was requested to submit future Annual Reports to this Committee.

Alternative Options Considered and Rejected:

Not applicable.

What will it cost and how will it be financed?

(A) Revenue Costs

N/A

(B) Capital Costs

N/A

Implications:

The following implications of this proposal have been considered and where there are specific implications, these are set out below:

Financial		
Legal		
Human Resources		
Equality		
1.	No Equality Implication	<input checked="" type="checkbox"/>
2.	Equality Implications identified and mitigated	<input type="checkbox"/>
3.	Equality Implication identified and risk remains	<input type="checkbox"/>

Impact of the Proposals on Service Delivery:

N/A

What consultations have taken place on the proposals and when?

The Head of Corporate Finance and ICT has no comments on this report because the contents of the report have no financial implications (FD 3031).

The Head of Corporate Legal Services has no comments on this report because the contents of the report have no legal implications (LD 2336/14).

Implementation Date for the Decision

Immediately following the Committee meeting.

Contact Officer: Mike Morris
Tel: 0151 934 2045
Email: mike.morris@sefton.gov.uk

Background Papers:

There are no background papers available for inspection

1. Background

- 1.1 The final report of the Corporate Parenting Working Group was presented to the Committee on 20 April 2010.
- 1.2 The Director of Young People and Families submitted a verbal update on the implementation of the Working Group's recommendations to the Committee at its meeting held on 27 March 2012.
- 1.3 The Director of Young People and Families submitted a progress report to the Committee at its meeting held on 23 September 2014. The Committee had previously requested that future Annual Reports of the Corporate Parenting Board should be submitted to the Committee.

2. Corporate Parenting Board Annual Report 2014/15

- 2.1 The Corporate Parenting Board Annual Report 2014/15 is attached as an annexe to this report and Members' comments are invited.

This page is intentionally left blank

Board Evaluation – Activities Report - Impact & Outcomes. 2014.

Ensured greater, multi agency, clarity re: roles and responsibilities as Corporate Parents

1. Full Council briefings have been introduced and are held bi annually. All elected members receive a presentation on the roles and responsibilities of Corporate Parents and are updated on the work of the Sefton Corporate Parenting Board. Briefings are held immediately prior to a full Council meeting to ensure as many members as possible can attend.

2. Following a full review updated Regulation 33 training for elected members was launched in January 2014. The first session took place in January 2014 for elected members and includes a brief on their roles and responsibilities as Corporate Parents. A second session was delivered in July 2014. The delivery of the session is co-facilitated by a member of the Making A Difference group who supports the elected members in gaining information from children and young people to contribute to reg 33 reports. In addition a 'discussion guide' was produced to further support elected members in engaging with children and young people.

3. Further briefing sessions on Corporate Parenting roles and responsibilities continue to be held for all LA departments and partnership agencies. During 2014 a variety of agencies and organisations have received briefing sessions including: Hugh Baird College / Southport Soroptimists and Sefton Governors Association.

The aim of the briefing sessions are to:

- Ensure colleagues and partners understand their role as Corporate Parents.
- Offer clarity re: responsibilities as Corporate Parents
- Encourage greater ownership of the Corporate Parenting Initiative
- Support colleagues and partners to incorporate Corporate Parenting policies and practice.

4. A dedicated session on Corporate Parenting roles and responsibilities is delivered on each foster carer preparation course. The session outlines the Sefton Corporate Parenting Initiative and gives potential foster carers an opportunity to consider how they will contribute to the role of Corporate Parent. Each session is co facilitated with 4 members of the M.A.D (Making A Difference) group.

5. Following recruitment onto L.A Independent Visitor and Advocacy Scheme volunteers participate in a comprehensive training programme. Each programme contains a session of the roles and responsibilities of Corporate Parents. The session is co facilitated with a member of the M.A.D (Making A Difference) group.

6. All workplace mentors supporting the delivery of the L.A Pathway to Employment Scheme receive a comprehensive briefing on the Sefton Corporate Parenting Initiative and the roles and responsibilities of Corporate Parents. The session also highlights the issues faced by care leavers and the absolute necessity that we endeavour to 'go the extra mile' in supporting their progress and learning.

7. Sefton Governors Association have received 2 presentations this year on the work of the Sefton Corporate Parenting Board and the roles and responsibilities of Corporate Parents. As a result of this

Agenda Item 4

input Sefton Governors Association agreed to continue sponsorship of 2 education awards at the No Limits Awards Ceremony held in July 2014

Strengthening multi agency partnerships.

1. Merseyside Connexions

Merseyside Connexions secondment of personal advisor within Corporate Parenting Service continues. The secondment further strengthens the pathway planning process for all looked after young people in Sefton and supports their progression into further education, employment or training.

2. Local Authority Pathway to Employment Scheme.

The LA **Pathway to Employment Scheme** was implemented on the 13th June 2011. The scheme was designed and developed by a multi agency working group (which included Sefton care leavers) and chaired by Mark Dale, Head of Personnel at Sefton Council. Establishment of the group brought together, for the first time, representatives from a number of departments and partners, who, individually over recent years, had offered opportunities to care leavers in Sefton. As one member stated at the first meeting "It's the first time that all the individual efforts have been brought together – it now has a focus and sense of ownership."

The Corporate Parenting Board continue to monitor and evaluate the scheme and, in partnership with the Local Authority, have secured continued funding for the scheme to run on an annual basis.

Following completion of each cohort comprehensive evaluation sessions are held with the young people involved. As one of the care leavers recently stated "**The apprenticeship scheme has changed my life. If I never got this chance I wouldn't be the person I am today and I am so grateful for that opportunity.**"

2014 Programme:

Four care leavers are currently engaged in the pathway to employment scheme at stages 1&2.

A further 3 care leavers, who are more 'work ready', have been given 6 month traineeships in the following departments: Cleansing / Youth Service and One Stop Shop. All are progressing well.

3. Sefton Care Leavers Centre - Sefton CVS and Venus Project.

Following recommendations made by members of the M.A.D. (Making A Difference) group in 2009, requesting that a dedicated Care Leavers Centre be established in Sefton, the Corporate Parenting Board and L.A sought assistance from Sefton CVS to find a voluntary sector partner to support development of this initiative. The Venus Project agreed to the partnership and became the management agency for the initiative. An initial lottery fund bid was unsuccessful, however, a following bid in 2012 was awarded in May 2013 and development of the centre commenced. Members of M.A.D. have been continuously involved throughout this time and two group members were given work experience within the project, one of whom is now fully employed as a project worker. With the assistance of the L.A suitable premises were found and the centre opened fully in September 2014. Members of M.A.D. update the Corporate Parenting Board at each meeting with the Centre Co-ordinator providing quarterly reports. Three care leavers have been elected to sit on the steering group for the project and all Corporate Parenting partners continue to offer their full support with the project.

The project team have met with the Foster Carers Development Group and many carers have been to visit the centre and discuss ways in which they can contribute to activities aimed to prepare young people for independence.

4. Sefton Council Leisure and Recreation Department.

The department are supporting the development of a 5 a side LAC and Care Leavers football team by offering free use of a practice pitch for one hour per week at the Netherton Activity Centre. The idea for the team came from one of our care leavers who has recently qualified as a football coach and referee. The care leaver will be organising and running the team.

5. Health and Wellbeing Services

Following ratification of the Sefton Pledge, Sefton Health and Wellbeing Services extended the distribution of leisure passes to all care leavers up age 21years. This had been identified as an issue, by care leavers, during work on the Pledge. In addition leisure passes have also been distributed to foster carers, birth children and siblings of LAC.

6. Housing Support

The 'Housing Support for Care Leavers' working group was, originally, established to consider the many accommodation issues faced by care leavers through their transition to adulthood and independent living. Members include: Supporting People / Neighbourhood and Investment Programmes / Contracts & Commissioning / M.A.D Group / Adult Services Housing Support and YOS. The aim of the group is to improve multi departmental and agency responses to the housing and support needs of care leavers. As a result of the recent Welfare Reforms an extraordinary meeting of the group was convened to assess the potential impact on Sefton care leavers. Representatives were invited from ARVATO (responsibility for implementing housing benefit reforms / discretionary housing payments) and as a result several meetings were held with senior officers from ARVATO to plan and implement joint working practices in respect of support for care leavers.

Outcomes to date include:

- Improvements made to Direct Access for care leavers following review by Supporting People Lead Officer. Since completion of review staff report no issues with accessing emergency accommodation for care leavers.
- L.A invites to tender to provide low level supported accommodation for young people required responses to specific questions re: provision of service for Sefton Care Leavers.
- Escalation policy established and introduced re: standards of accommodation.
- One Vision Housing senior officer is a member on the Corporate Parenting Board.
- Private providers list has been expanded from 3 to 8.

7. No Limits Awards 2014 - Celebration of Achievements.

The Corporate Parenting Board have established a multi agency working group to support and ensure continued deliver of the annual No Limits Annual Award Ceremony for LAC and Care Leavers. This year sponsorship support was received from a wide variety of agencies and organisation including: Liverpool Community Health / Merseyside Community Rehabilitation Company / Family Care Associates / Parenting 2000 / Sefton Governors Association / One Vision Housing / Homescop / Sefton CVS / Crosby Soroptimists and Southport Soroptimists. In 2014 the event celebrated its 13th year and was a huge success with 262 nominations received from social workers, foster carers, teachers and support staff. Every nominee received a £20 voucher, certificate and goodie bag with 29 main awards presented on the night.

Agenda Item 4

Feedback from the event included:

- It is a bit of an emotional evening for me and one that I really enjoyed – again!
- It was a fabulous evening and I really enjoyed the ceremony
- Once again an enjoyable night.
- It was an honour attending the event and a very humbling experience.
- The Tyler family would like to thank you and all the team involved in the No Limits Awards. We were blown away with winning an award.

8. Department for Work and Pensions Protocol.

Due to the recent welfare reforms the Corporate Parenting Board instigated a full review of the existing protocol agreement between the LA and the DWP. The multi agency working group, which continue to meet bi monthly, reviewed the existing agreement and agreed that the protocol would need to undergo a complete re-write in order to reflect the full extent of the reforms introduced. In addition Sefton borough introduced Universal Credit in July 2014 which further impacted on the document. The protocol is currently in draft form and the group continue to monitor central government activities and amend accordingly.

Membership of the working group continues to include a range of partners: DWP / Connexions / Sefton@Work / Ingues / A4e / Leaving Care Personal Advisors and Sefton EBP. The group report quarterly to the Corporate Parenting Board.

In addition, following concerns raised by the working group at the August meeting of the Corporate Parenting Board re: the impact on care leavers of the 5 week delay in receiving first UC payment, members requested that these concerns are raised at national government level. This was done by the Deputy Chief Executive of Sefton Council.

The Corporate Parenting Officer attends monthly UC roll out meetings hosted by the LA and attended by all of the key partners. The meeting monitors the impact and plans responses following the introduction of Universal Credit. The Corporate Parenting Officer represents the issues and concerns in relation to Sefton Care Leavers.

9. CAMHS.

The restructure of CAMHS was completed in March 2013 by Alder Hey NHS Foundation Trust. A single point of access has now been introduced and the Clinical Lead for CAMHS continues to report progress at each Corporate Parenting Board meeting on a quarterly basis. Members are closely scrutinising the new structure to ensure that looked after children in Sefton receive timely and appropriate assessment and intervention as required.

In addition the Clinical Lead for Sefton CAMHS has met with the Making A Difference group to gain their views of the current service provision and get their ideas on how to make the service more accessible to children and young people in Sefton. The group have agreed to work with the CAMHS providers via their Health Focus Group.

10. Sefton and Merseyside Clinical Commissioning Groups.

A representative of the CCG's in Sefton has become a member of the Corporate Parenting Board advising members on CCG activities and supporting a partnership approach to the commissioning of services. In addition, the lead nurse for safeguarding representing Merseyside CCG's, has also become a board member. Following the August 2014 meeting of the Corporate Parenting Board discussions have taken place, with senior officers, on how learning can be, better, shared between the L.A and the CCG's.

11. Sefton Schools Forum. Targeted Funding of £1,000 per LAC per year – Local Initiative.

The Sefton Schools Forum have agreed to continue the targeted funding of £1,000 per looked after child per year. This is a local Sefton initiative and is in addition to the national Pupil Premium grant of £1,900 per looked after child.

A governing body for the Virtual School has been established and is chaired by the Strategic Director for Children's Services. A member of the M.A.D. (Making A Difference) Group sits on the governing body. The governing body report quarterly to the Corporate Parenting Board. The M.A.D. group members held a competition to name the Virtual School and the winner was Karla with 'L.A.C.E.S.' (Looked After Children's Education in Sefton).

In conjunction with the M.A.D. group the Virtual Head Teacher has redesigned the Personal Education Plans and introduced a new process for the completion and quality assurance of them.

Corporate Parenting board members receive quarterly reports on the education and attainment of looked after children and young people in Sefton.

12. Families First (Early Learning and Childcare Services)

Following a presentation on Corporate Parenting roles and responsibilities to members of the Families First executive committee members agreed to prioritise Sefton care leavers, who were parents, in relation to service provision and support and waiver the residential criteria, re: allocation of services, for this group. Leaving Care support staff report that the joint working Families First colleagues has ensured greater access to information, services and support for care leavers who are parents.

13. Southport Football Club. Community Programme.

Southport FC deliver a comprehensive community programme during all school holidays. The programme is aimed at children and young people aged 5-14yrs. Since August of 2012 the club, in partnership with the Corporate Parenting Board, provide free places on the scheme for looked after children and young people in Sefton. During the Summer break in 2014 a total of 30 free places were offered over the 3 community programmes held.

14. Sefton Governors' Association (SGA)

The SGA provides a direct link between governors and the Local Authority (LA) on matters of mutual concern and interest, to improve communications generally and to ensure the views of Sefton Governors are recognised.

A member of the SGA (CPB member) provides feedback to the SGA at their termly meetings. Corporate Parenting is a standing item on the agenda of all SGA meetings. The minutes of these meetings are distributed to all governors in Sefton. This has led to increased awareness by the membership. Following agreement at the AGM (Annual General Meeting) in October 2012 the SGA sponsored two awards at the 2013 No Limits Awards Ceremony and continued this funding in 2014. The chair of the SGA attended the event and presented the awards to the two winners.

15. Sefton Fostering Panel

Corporate Parenting Board members worked alongside Sefton Fostering Panel to develop a questionnaire aimed at improving input from schools to contribute to foster carers annual reviews. This has now been introduced and is used to routinely gather feedback.

16. Foster Family Friendly Agreement

Agenda Item 4

Following representation to the board, in relation to the support of foster carers who are in employment, members developed and introduced a 'Foster Family Friendly' agreement. The aim of the agreement is to commit signatories to providing employees with additional support if they are registered foster carers. To date the following partners have signed up to the agreement: Liverpool Community Health / Sefton Council / Sefton CVS / Merseyside Connexions / Kings Meadow Primary School and Holy Rosary Catholic Primary School. A presentation was delivered to the Annual General Meeting of Sefton Governors Association in October 2014 aimed at encouraging more Sefton schools to become involved in the initiative

Increased accountability and scrutiny.

1. The Corporate Parenting Board provide the LSCB and the Health and Wellbeing Board with the minutes of each board meeting for information and vice versa. The Corporate Parenting Officer is a member of the LSCB Business Executive Group and is available to advise and update the LSCB on Corporate Parenting business.
2. Annual Board Evaluation Document is sent to Sefton Council Overview and Scrutiny Committee.
3. Senior managers are required to report quarterly to the Board on current status, developments and issues in relation to Fostering and Adoption Services / Corporate Parenting Services / Leaving Care Support / Residential Homes/ and Planning and Performance (QA).
4. A standing item on the Board's agenda is a full briefing on the activities of the M.A.D (Making A Difference) group. Board members are keen to both support, and ensure, the qualitative involvement of looked after children and care leavers.
5. A standing item on the Board's agenda is a briefing from the Strategic Director of Children's Services. This is to ensure that members are kept fully informed of developments in relation to all aspects of support and services for looked after children and care leavers in Sefton.
6. The Youth Offending Service (YOS) provide the Corporate Parenting Board with annual review of all looked after children and care leavers in Sefton who have been engaged with their services.
7. The Independent Reviewing Service provide bi annual reports to the Corporate Parenting Board.
8. The Children's Complaints Service provide an annual report to the Corporate Parenting Board.
9. The Independent Visiting and Advocacy Service provide a bi annual report to the Corporate Parenting Board.
10. The Sefton Care Leavers Centre - 'Our Place' - provide a quarterly report to the Corporate Parenting Board.
11. A governing body for the Virtual School has been established and is chaired by the Strategic Director for Children's Services. A member of the M.A.D. (Making A Difference) Group sits on the governing body alongside the Virtual School Head Teacher, Lead Member for Children's Services, Primary and Secondary Head Teacher representatives and 2 Elected Members. The governing body report quarterly to the Sefton Corporate Parenting Board.
12. At the meeting of the Sefton Corporate Parenting Board held on the 19th August 2014, members discussed the recent amendments to Children's Homes Regulations 2014. In particular members discussed the amended requirements in respect of Regulation 33 visits and agreed on the necessity to ensure that the current LA framework for Regulation 33 visits is compliant with the amended regulations.

The board established a task focussed working group with the remit to:

- Review current arrangements and identify issues arising.
- Compare current arrangements with DoE Children's Homes Regulations Amendments 2014 to ensure full compliance and identify areas in need of development.

The task group presented three proposals to members of the board on 16th October with the following recommendation made to the Strategic Director of Children's Services.

Short Term - With immediate effect:

- Independent person(s) be tasked, in accordance with guidance on independent and connected persons, to undertake all regulation 33 visits to Sefton Children's Homes to fulfil the regulated Ofsted requirements. The independent person(s) should be independent of Sefton LA Children's Services and have knowledge, experience and skills relevant to the task. They may be engaged from outside the authority or from a different service area within the authority such as: Adult Services and/or Quality Assurance, Commissioning & Compliance.

Mid Term - Within next three months:

- Develop engagement strategy to support and ensure the continued involvement of Sefton Council Elected Members in the monitoring and quality assurance of support and services provided by Sefton Council Children's Homes with a view to Elected Members completing Regulation 33 visits with the independent person as outlined above

Long Term - Within next six months

- Explore options to develop 'reciprocal' arrangements with neighbouring Local Authorities to undertake Regulation 33 visits and assess the practicality of doing so.

Increased involvement of young people and foster carers in the strategic development and scrutiny of services.

1. Four young people (LAC & Care Leavers reps) are members of Corporate Parenting Board. Membership rotates on a two yearly basis. In addition members of the Making A Difference Group who have 3 years, or more, membership of the group can become full members of the Corporate Parenting Board. The aim of this 'progression' route is to offer further opportunity and challenge to M.A.D (Making A Difference) members and seek to increase further their knowledge of, and contribution to, the strategic work of the Local Authority. There are, currently, two care leavers who are full members of the board.

2. The members of the M.A.D. group held a full review of their activities in January 2014 and following discussion devised a new framework for meetings. The full forum now meet together quarterly with members now participating in 3 separate focus groups that meet on a monthly basis. The focus group are: Education and Pathway Planning / CSE and Training. In addition members agreed that they would establish task focussed groups as required. To date they have held health task group meetings and independent visiting and advocacy task group meetings.

3. Three Sefton Care Leavers are members of the All Party Parliamentary Group that meets in Westminster.

4. One Sefton Care Leaver is a member of the National Youth Justice Advisory Board.

Agenda Item 4

5. M.A.D. group members participated in the redesign of Personal Education Plans with the Virtual School Head Teacher. All of their advice and feedback was been taken on board and the new process and form has been developed directly as a result of this. As requested by the group children and young people can now choose who they would like to speak to about their education and how it is going for them and this will then be fed into the PEP review.

6. Members of M.A.D. met with the Head of Service for Vulnerable Children and Young People and participated in the development of a funding bid to support the introduction of an Adolescent Service in Sefton. Members also wrote a letter of to the funding body to express their support of the initiative.

7. The Clinical Lead for Sefton CAMHS has met with M.A.D. group members as part of the redesign of the service. Members provided their thoughts and views of how to ensure the service is as accessible as possible for children and young people. Members are also thinking up a name for Sefton CAMHS to reduce any stigma attached to the 'technical' name for the service.

8. LAC and Care Leavers are members of Employability Working Group, Child Sexual Exploitation Working Group, Housing Support Group and Virtual School Governing Body.

9. M.A.D. group members are part of the organising committee for the Sefton No Limits Annual Awards.

10. M.A.D group members have attended two conferences in 2014 to represent the Corporate Parenting Initiative in Sefton. The Who Cares Trust regional event in Liverpool and a Corporate Parenting Conference in Chorley.

11. LAC and Care Leavers meet quarterly with CEO, Deputy CEO and the Strategic Director and have been actively involved in LA Strategic Planning initiatives.

12. LAC and Care Leavers meet monthly with the Head of Vulnerable Children Services and the Service Manager for Corporate Parenting Services.

13. A Sefton Care Leaver is a full time member of the Sefton Fostering Panel.

14. Members of M.A.D have been actively involved in the recent redesign of children's social care services working closely with the Head of Vulnerable Children's Services.

15. Foster Carers Planning Groups have been established to encourage and support greater involvement of foster carers in the planning and delivery of fostering services.

16. Two foster carer reps are members of Corporate Parenting Board. Membership rotates on two yearly basis. One rep is a L.A carer and the other is a kinship carer.

17. M.A.D. group members were actively involved in the development of the Sefton Council Corporate DVD with two group members appearing in the final piece. The DVD will be used during the induction of new employees and as a information piece about the borough.

18. Members of M.A.D. are working closely with Sefton LSCB on Child Sexual Exploitation. Two group members co-facilitate the Multi Agency CSE training with the LSCB Training Officer and one group member sits on the CSE working group

19. Training:

Elected Members / Councillors

A representative of M.A.D co-facilitates regulation 33 training for elected members. Members of M.A.D developed input for the session which now includes advice for elected members on how best to engage with children and young people in residential settings.

20. Foster Carers

Foster carer preparation courses are routinely held with one session devoted to the roles and responsibilities of Corporate Parents. This session is co-facilitated by 4 members of M.A.D. Feedback from sessions has been overwhelmingly positive and helps potential foster carers to dispel some of the initial 'myths' they have about children and young people in care. Ultimately this will support their understanding of children and young people who live in care and the issues that affect them.

21. Independent Visitors and Advocates

Independent Visitor and Advocacy training courses are held for community volunteers recruited onto the L.A scheme. Members of M.A.D deliver a session on Corporate Parenting and the needs of looked after children giving the volunteers an insight into the lives of children in care. Feedback from sessions held has been extremely welcoming of the valuable contribution this session makes to participants overall understanding.

22. Multi Agency LSCB CSE Training.

Two members of M.A.D. co-facilitate delivery of the LSCB CSE Multi Agency Training. Their input provides an insight into young people's thoughts about the issue and highlights some of the dangers when accessing social media sites. The feedback from the sessions has been extremely positive about the young people's input.

23. Designated Teacher Training.

One member of M.A.D. routinely co-facilitates Designated Teacher training sessions with the Virtual School Head Teacher. The input focuses on children and young people's views of education and their thoughts on how they can be best supported. The information uses local and national perspectives.

24. Sefton Governors Association.

A member of the M.A.D. group provides an input at training events for Sefton Governors. The first session took place during the spring term of 2014 with subsequent sessions provided throughout the academic year.

Sefton Pledge to Children in Care.

1. The 'Pledge' was ratified at the inaugural meeting of the Sefton Corporate Parenting Board on the 6th of October, 2009 and is included within the Sefton Corporate Parenting Strategy.
2. Annual survey on Sefton Pledge to Children in Care and Care Leavers introduced in 2010. Survey outcomes reported to Board. Board members agree areas for improvement and an action plan is developed. The action plan is then circulated to senior managers who report, directly to the Board, on progress made. The 2014 survey was sent to 312 children and young people aged 5yrs plus with a total of 72 (24%) completed forms returned.
3. Every report to the Corporate Parenting Board requires the author to state how they incorporate the Sefton Pledge into their work and how they engage with and involve looked after children and care leavers in Sefton.

Sefton Care Leaver and M.A.D. group member – Joanne Lee – winner of the Inspirational Young Woman of the Year 2014 awarded by the Inspiring Women Foundation. Sefton Care Leaver and M.A.D. group member – Shana Boyd – winner of the Young Mum of the Year 2014 awarded by the Caron Keating Foundation.

This page is intentionally left blank

Report to: Overview and Scrutiny Committee **Date of Meeting:** 27 January 2015
 (Children’s Services)

Subject: School Organisation and School Places Information

Report of: Director of Young People and Families

Wards Affected: All

Is this a Key Decision? No

Is it included in the Forward Plan? No

Exempt/Confidential

No

Purpose/Summary

The Director of Young People and Families was requested to submit an annual report to this Committee on school organisation and school places following publication of the School Organisation Data Book.

Recommendation

That the Committee considers the information in the report.

How does the decision contribute to the Council’s Corporate Objectives?

	<u>Corporate Objective</u>	<u>Positive Impact</u>	<u>Neutral Impact</u>	<u>Negative Impact</u>
1	Creating a Learning Community		√	
2	Jobs and Prosperity		√	
3	Environmental Sustainability		√	
4	Health and Well-Being		√	
5	Children and Young People		√	
6	Creating Safe Communities		√	
7	Creating Inclusive Communities		√	
8	Improving the Quality of Council Services and Strengthening Local Democracy		√	

Agenda Item 5

Reasons for the Recommendation:

The Director of Young People and Families was requested to submit an annual report to this Committee on school organisation and school places following publication of the School Organisation Data Book.

What will it cost and how will it be financed?

(A) Revenue Costs N/A

(B) Capital Costs N/A

Implications:

The following implications of this proposal have been considered and where there are specific implications, these are set out below:

Legal: School reorganisations are covered by statutory processes and the Local Authority has statutory duties in terms of ensuring sufficiency and quality of school places.

Human Resources: N/A

Equality

- | | |
|---|-------------------------------------|
| 1. No Equality Implication | <input checked="" type="checkbox"/> |
| 2. Equality Implications identified and mitigated | <input type="checkbox"/> |
| 3. Equality Implication identified and risk remains | <input type="checkbox"/> |

Impact on Service Delivery: N/A

What consultations have taken place on the proposals and when?

The Head of Corporate Finance & ICT Strategy (FD3397) has been consulted and has no comments to make on this report as there are no financial consequences as a result of it.

The Head of Corporate Legal Services (LD2689/15) has been consulted and has no comment on the report.

Are there any other options available for consideration? N/A

Implementation Date for the Decision: Immediately following the Committee meeting.

Contact Officer: Mike McSorley, Head of Learning and Support

Tel: 0151 934 3428

Email: mike.mcsorley@sefton.gov.uk

Background Papers: School Organisation Data Book 2014/15 to 2018/19.

1. Introduction

- 1.1 Committee have requested an annual report following publication of the Council's School Organisation Data Book.
- 1.2 Previously the Committee have been made aware of the changing landscape of education provision and considered a range of factors and issues which impact on school organisation summarised below:
- **Government Policy** – a market led model, more autonomy for schools, choice of different types of provision for parents.
 - **LA Statutory Duties** - to ensure sufficiency of school places and to intervene in the case of failing schools (DSG funded schools only). The LA also needs to support our most deprived communities and the right balance of provision to meet local needs.
 - **Government's vision is for LAs** - to provide a 'strong strategic role as champions for parents, families and vulnerable pupils'; and to 'promote educational excellence by ensuring a good supply of high quality school places...'
 - **Factors affecting Pupil Place Planning:** - planning for future pupil numbers the local factors influencing the availability of places are school capacity, school popularity, school viability, birth projections and the delay in receiving these, local population mix, future housing yield, demographics and migration. All these factors can be uncertain.
 - **Education reform:** has resulted in FE colleges being able to provide 14-16 education from September 2013. Locally Education Providers in Sefton are developing Studio School and Free School proposals. Increased autonomy and variety in the schools system has reduced LA influence and control over school organisation.
 - **School funding reform:-** which came into force for 2013/14 budgets started the move towards a national funding formula and is likely to have an effect on funding for some schools in Sefton as local discretion on the funding formula will be limited. Capital funding for schools has been reduced down to around £3.5m per year and this includes all school maintenance as well as creating additional places.
 - **Demographic Issues:** - Members will be aware of the Council's consultation on the Local Plan and the options for new housing over the next 15 years.

2 Primary Sector - Pupil Places and Numbers

- 2.1 The total number of pupils in Sefton primary schools was 19,903 against a total number of places of 22,389 and the demand is predicted to increase to 20,548 by

Agenda Item 5

2018/19. Annex A gives details for each area of the Borough. There are 3,152 reception places in Sefton and demand is projected to peak at 2,983 in 2015/16.

2.2 There are variations in the different parts of the borough and Annex A gives details for each area of the Borough and a summary of each area is as follows:

- Southport
The priority has been to ensure that there is sufficiency of pupil places particularly in Southport and plans have been proposed to provide sufficient places to meet the 5 year projections.
- Formby
Previous decisions around individual schools capacity mean that provision and pupil numbers are well matched over the next 5 years in overall terms. There are still local pressures with the most popular schools being oversubscribed. The local plan consultation identified several potential housing development sites in the Formby area and development of these in future will need to be closely monitored.
- Litherland
Pupil numbers are likely to increase over the next 5 years. However, there will still be surplus capacity equivalent to a 1.5 form entry primary school in this area. Demand for reception places will remain steady.
- Maghull and Aintree
Pupil numbers are decreasing over the next 5 years and there will be surplus capacity. The local plan consultation identified several potential housing development sites in the Maghull and Aintree area and development of these in future will need to be closely monitored.
- Crosby
Pupil numbers are projected to increase in parts of the Crosby area and plans have been proposed to ensure a balance over the planning period.
- Bootle
Pupil numbers are increasing over the next 5 years with demand for reception places projected to increase to match the number of places.

3 Secondary Sector - Pupil Places and Numbers

3.1 The total number of secondary places is 20,420 with 17,85 pupils in those schools. FE Colleges are not included as their provision does not form part of the school census. There are variations in the different parts of the borough and Annex A gives details for each area of the Borough and a summary of each area is as follows:

- Southport
Pupil numbers are likely to reduce marginally over the next 5 years but then start to increase as increases in the primary population feed through.

- Formby
Pupil numbers are projected to decline over the next 5 years; however, there is a possibility that the Formby High Schools will attract pupils from surrounding areas.
- Litherland
Pupil numbers are projected to remain at a similar level over the next 5 years.
- Crosby
Pupil numbers are expected to rise over the next 5 years. Action may need to be taken towards the end of this period to ensure sufficiency of secondary school places in the Crosby Area given the anticipated flow through from the local primary sector.
- Maghull and Aintree
Pupil numbers in this area are projected to decline over the next 5 years. However, the projected demand for year 7 places looks likely to increase.
- Bootle
Pupil numbers will decline over the next 5 years and the Council's strategy for managing surplus places has been undermined by the creation of the Free School. Year 7 pupil numbers will increase slightly over the period although it is not known what impact FE Colleges and Free School proposals in the pipeline will have on this area.

4 Summary

- 4.1 Sefton has some excellent schools and an above average number of good and outstanding schools. The Local Authority want to have a proactive role in ensuring that this continues and that schools in Sefton are helping all children and young people fulfil their potential.
- 4.2 Managing pupil places is a complex matter and Members can see from the issues raised in the report the range and variety of factors which need to be considered. All this is complicated further by Government's education reforms which are changing the way schools are funded and governed as well as encouraging a broader range of school provision.
- 4.3 The demand for school places is reviewed annually and proposals developed to meet local pressure points as they arise. The implications of any pressures in respect of local plan developments are not included because they are not yet developed in terms of timescales and impact.
- 4.4 Officers are, within the parameters and constraints detailed in the report, working with schools and other stakeholders to ensure that schools are viable, there are sufficient places and schools provide the standard of education expected.

Agenda Item 5

Appendix A SCHOOL PLACES IN SEFTON

A. Primary

1. Numbers and Types of Schools, January 2014

School Type	Community	CE		Catholic Aided
		Controlled	Aided	
Primary	30	6	10	24
Infant	2	-	-	1
Junior	2	-	-	0
Total	34	6	10	25

2. Number of School Places, January 2014

School Type	Community	CE		Catholic Aided
		Controlled	Aided	
Primary	9,449	1,950	2,100	7,330
Infant	630	-	-	90
Junior	840	-	-	0
Total	10,919	1,950	2,100	7,420

Grand Total	22,389
-------------	--------

3. Demand and Supply of Primary School Places 2013/14 to 2018/19

Year	Demand		Number of Places	Net Capacity
	Actual	Projected		
2013/14	19,903		22,389	21,767
2014/15		20,046		
2015/16		20,241		
2016/17		20,429		
2017/18		20,499		
2018/19		20,548		

4. Demand and Supply of Reception Places 2013/14 to 2018/19

Year	Demand		Number of Places
	Actual	Projected	
2013/14	2,910		3,152
2014/15		2,913	
2015/16		2,983	
2016/17		2,955	
2017/18		2,932	
2018/19		2,932	

B. Secondary

1. Numbers and Types of Schools, January 2014

School Type	Community	CE		Catholic Aided
		Controlled	Aided	
Secondary 11-16	6	-	0	2
Secondary 11-18*	5	-	1	4
Sixth Form College	1	-	-	-
Total	12	-	1	6

*Seven of these schools are now academies

2. Number of School Places, January 2014

School Type	Community	CE		Catholic Aided
		Controlled	Aided	
Secondary 11-16	5,699	-	0	600
Secondary 11-18	6,319	-	756	5,766
Free School	600	-	-	-
Sixth Form College	680	-	-	-
Total	13,298	-	756	6,366

Grand Total	20,420
--------------------	---------------

3. Demand and Supply of Secondary School Places 2013/14 to 2018/19

Year	Demand		Number of Places	Net Capacity
	Actual	Projected*		
2013/14	17,895		20,420	20,546
2014/15		17,679		
2015/16		17,411		
2016/17		17,242		
2017/18		17,353		
2018/19		17,484		

*September forecasts

4. Demand and Supply of Year 7 Places 2013/14 to 2018/19

Year	Demand		Total Number of Places
	Actual	Projected*	
2013/14	2,859		3,548
2014/15		3,017	
2015/16		3,047	
2016/17		2,974	
2017/18		3,112	
2018/19		3,097	

*September forecasts

Agenda Item 5

SCHOOL PLACES IN BOOTLE

A. Primary

1. Numbers and Types of Schools, January 2014

2.

School Type	Community	CE		Catholic Aided
		Controlled	Aided	
Primary	6	1	1	6
Infant	0	-	-	0
Junior	0	-	-	0
Total	6	1	1	6

3. Number of School Places, January 2014

4.

School Type	Community	CE		Catholic Aided
		Controlled	Aided	
Primary	1,830	375	210	1,830
Infant		-	-	
Junior		-	-	
Total	1,830	375	210	1,830

Grand Total	4,245
-------------	-------

5. Demand and Supply of Primary School Places 2013/14 to 2018/19

Year	Demand		Number of Places	Net Capacity
	Actual	Projected		
2013/14	3,362		4,245	3,944
2014/15		3,399		
2015/16		3,507		
2016/17		3,625		
2017/18		3,703		
2018/19		3,780		

6. Demand and Supply of Reception Places 2013/14 to 2018/19

Year	Demand		Number of Places
	Actual	Projected	
2013/14	538		555
2014/15		509	
2015/16		558	
2016/17		558	
2017/18		558	
2018/19		558	

SCHOOL PLACES IN BOOTLE

B. Secondary

1. Numbers and Types of Schools, January 2014

School Type	Community	CE		Catholic Aided
		Controlled	Aided	
Secondary 11-16	1	-	-	1
Secondary 11-18	0	-	-	1
Free School	1			0
Total	2	-	-	2

2. Number of School Places, January 2014

School Type	Community	CE		Catholic Aided
		Controlled	Aided	
Secondary 11-16	962	-	-	1,404
Secondary 11-18	-	-	-	0
Free School	600			
Total	1,562	-	-	1,404

Grand Total	2,966
--------------------	--------------

3. Demand and Supply of Secondary School Places 2013/14 to 2018/19

Year	Demand		Number of Places	Net Capacity
	Actual	Projected*		
2013/14	2,235		2,966	3,107
2014/15		2,131		
2015/16		2,051		
2016/17		1,986		
2017/18		1,996		
2018/19		2,025		

*September forecasts

4. Demand and Supply of Year 7 Places 2012/13 to 2017/18

Year	Demand		Total Number of Places
	Actual	Projected*	
2013/14	399		614
2014/15		406	
2015/16		382	
2016/17		376	
2017/18		436	
2018/19		425	

*September forecasts

Agenda Item 5

SCHOOL PLACES IN LITHERLAND

A. Primary

1. Numbers and Types of Schools, January 2014

School Type	Community	CE		Catholic Aided
		Controlled	Aided	
Primary	3	1	-	4
Infant	-	-	-	-
Junior	-	-	-	-
Total	3	1	-	4

2. Number of School Places, January 2014

School Type	Community	CE		Catholic Aided
		Controlled	Aided	
Primary	870	210	-	1,260
Infant	-	-	-	-
Junior	-	-	-	-
Total	870	210	-	1,260

Grand Total	2,340
-------------	-------

3. Demand and Supply of Primary School Places 2013/14 to 2018/19

Year	Demand		Number of Places	Net Capacity
	Actual	Projected		
2013/14	1,762		2,340	2,187
2014/15		1,809		
2015/16		1,843		
2016/17		1,858		
2017/18		1,856		
2018/19		1,864		

4. Demand and Supply of Reception Places 2013/14 to 2018/19

Year	Demand		Number of Places
	Actual	Projected	
2013/14	267		330
2014/15		262	
2015/16		270	
2016/17		264	
2017/18		264	
2018/19		264	

SCHOOL PLACES IN LITHERLAND

B. Secondary

1. Numbers and Types of Schools, January 2014

School Type	Community	CE		Catholic Aided
		Controlled	Aided	
Secondary 11-16	1	-	-	-
Secondary 11-18	-	-	-	-
Sixth Form College	1			-
Total	2	-	-	-

2. Number of School Places, January 2014

School Type	Community	CE		Catholic Aided
		Controlled	Aided	
Secondary 11-16	1,200	-	-	-
Secondary 11-18	-	-	-	-
Sixth Form College	680			-
Total	1,880	-	-	-

Grand Total	1,880
-------------	-------

3. Demand and Supply of Secondary School Places 2013/14 to 2018/19

Year	Demand		Number of Places	Net Capacity
	Actual	Projected*		
2013/14	1,420		1,880	1,798
2014/15		1,447		
2015/16		1,418		
2016/17		1,403		
2017/18		1,400		
2018/19		1,396		

*September forecasts

4. Demand and Supply of Year 7 Places 2013/14 to 2018/19

Year	Demand		Total Number of Places
	Actual	Projected*	
2013/14	154		240
2014/15		170	
2015/16		202	
2016/17		189	
2017/18		187	
2018/19		181	

*September forecasts

Agenda Item 5

SCHOOL PLACES IN CROSBY

A. Primary

1. Numbers and Types of Schools, January 2014

School Type	Community	CE		Catholic Aided
		Controlled	Aided	
Primary	2	1	3	5
Infant	1	-	-	-
Junior	1	-	-	-
Total	4	1	3	5

2. Number of School Places, January 2014

School Type	Community	CE		Catholic Aided
		Controlled	Aided	
Primary	720	315	630	1,680
Infant	270	-	-	-
Junior	360	-	-	-
Total	1,350	315	630	1,680

Grand Total	3,975
-------------	-------

3. Demand and Supply of Primary School Places 2013/14 to 2018/19

Year	Demand		Number of Places	Net Capacity
	Actual	Projected		
2013/14	3,714		3,975	3,853
2014/15		3,742		
2015/16		3,753		
2016/17		3,757		
2017/18		3,750		
2018/19		3,730		

4. Demand and Supply of Reception Places 2013/14 to 2018/19

Year	Demand		Number of Places
	Actual	Projected	
2013/14	534		555
2014/15		548	
2015/16		529	
2016/17		527	
2017/18		527	
2018/19		527	

SCHOOL PLACES IN CROSBY

B. Secondary

1. Numbers and Types of Schools, January 2014

School Type	Community	CE		Catholic Aided
		Controlled	Aided	
Secondary 11-16	-	-	-	-
Secondary 11-18*	1	-	1	2
Total	1	-	1	2

*One of these schools is now an academy

2. Number of School Places, January 2014

School Type	Community	CE		Catholic Aided
		Controlled	Aided	
Secondary 11-16	-	-	-	-
Secondary 11-18	1,326	-	756	2,264
Total	1,326	-	756	2,264

Grand Total	4,347
--------------------	--------------

3. Demand and Supply of Secondary School Places 2013/14 to 2018/19

Year	Demand		Number of Places	Net Capacity
	Actual	Projected*		
2013/14	3,879		4,347	4,413
2014/15		3,877		
2015/16		3,849		
2016/17		3,857		
2017/18		3,927		
2018/19		4,028		

*September forecasts

4. Demand and Supply of Year 7 Places 2013/14 to 2018/19

Year	Demand		Total Number of Places
	Actual	Projected*	
2013/14	568		713
2014/15		688	
2015/16		686	
2016/17		659	
2017/18		688	
2018/19		706	

*September forecasts

Agenda Item 5

SCHOOL PLACES IN FORMBY

A. Primary

1. Numbers and Types of Schools, January 2014

School Type	Community	CE		Catholic Aided
		Controlled	Aided	
Primary	3	1	1	2
Infant	-	-	-	-
Junior	-	-	-	-
Total	3	1	1	2

2. Number of School Places, January 2014

School Type	Community	CE		Catholic Aided
		Controlled	Aided	
Primary	795	420	210	420
Infant	-	-	-	-
Junior	-	-	-	-
Total	795	420	210	420

Grand Total	1,845
-------------	-------

3. Demand and Supply of Primary School Places 2013/14 to 2018/19

Year	Demand		Number of Places	Net Capacity
	Actual	Projected		
2013/14	1,740		1,845	1,785
2014/15		1,722		
2015/16		1,697		
2016/17		1,665		
2017/18		1,621		
2018/19		1,553		

4. Demand and Supply of Reception Places 2013/14 to 2018/19

Year	Demand		Number of Places
	Actual	Projected	
2013/14	237		255
2014/15		234	
2015/16		232	
2016/17		223	
2017/18		200	
2018/19		200	

SCHOOL PLACES IN FORMBY

B. Secondary

1. Numbers and Types of Schools, January 2014

School Type	Community	CE		Catholic Aided
		Controlled	Aided	
Secondary 11-16	-	-	-	-
Secondary 11-18*	2	-	-	-
Total	2	-	-	-

*These schools are now academies

2. Number of School Places, January 2014

School Type	Community	CE		Catholic Aided
		Controlled	Aided	
Secondary 11-16	-	-	-	-
Secondary 11-18	2,218	-	-	-
Total	2,218	-	-	-

Grand Total	2,218
--------------------	--------------

3. Demand and Supply of Secondary School Places 2013/14 to 2018/19

Year	Demand		Number of Places	Net Capacity
	Actual	Projected*		
2013/14	2,149		2,218	2,218
2014/15		2,095		
2015/16		2,051		
2016/17		2,013		
2017/18		1,989		
2018/19		1,976		

*September forecasts

4. Demand and Supply of Year 7 Places 2013/14 to 2018/19

Year	Demand		Total Number of Places
	Actual	Projected*	
2013/14	341		356
2014/15		317	
2015/16		322	
2016/17		321	
2017/18		307	
2018/19		333	

*September forecasts

Agenda Item 5

SCHOOL PLACES IN MAGHULL & AINTREE

A. Primary

1. Numbers and Types of Schools, January 2014

School Type	Community	CE		Catholic Aided
		Controlled	Aided	
Primary	7	1	1	4
Infant	-	-	-	-
Junior	-	-	-	-
Total	7	1	1	4

2. Number of School Places, January 2014

School Type	Community	CE		Catholic Aided
		Controlled	Aided	
Primary	1,925	420	210	1,040
Infant	-	-	-	-
Junior	-	-	-	-
Total	1,925	420	210	1,040

Grand Total	3,595
-------------	-------

3. Demand and Supply of Primary School Places 2013/14 to 2018/19

Year	Demand		Number of Places	Net Capacity
	Actual	Projected		
2013/14	3,206		3,595	3,528
2014/15		3,194		
2015/16		3,192		
2016/17		3,184		
2017/18		3,177		
2018/19		3,193		

4. Demand and Supply of Reception Places 2013/14 to 2018/19

Year	Demand		Number of Places
	Actual	Projected	
2013/14	446		515
2014/15		439	
2015/16		450	
2016/17		464	
2017/18		464	
2018/19		464	

SCHOOL PLACES IN MAGHULL & AINTREE

B. Secondary

1. Numbers and Types of Schools, January 2014

School Type	Community	CE		Catholic Aided
		Controlled	Aided	
Secondary 11-16	-	-	-	-
Secondary 11-18*	2	-	-	1
Total	2	-	-	1

*Two of these schools are now academies

2. Number of School Places, January 2014

School Type	Community	CE		Catholic Aided
		Controlled	Aided	
Secondary 11-16	-	-	-	-
Secondary 11-18	2,775	-	-	1,523
Total	2,775	-	-	1,528

Grand Total	4,298
--------------------	--------------

3. Demand and Supply of Secondary School Places 2013/14 to 2018/19

Year	Demand		Number of Places	Net Capacity
	Actual	Projected*		
2013/14	3,905		4,298	4,303
2014/15		3,867		
2015/16		3,824		
2016/17		3,817		
2017/18		3,820		
2018/19		3,832		

*September forecasts

4. Demand and Supply of Year 7 Places 2013/14 to 2018/19

Year	Demand		Total Number of Places
	Actual	Projected*	
2013/14	577		703
2014/15		636	
2015/16		634	
2016/17		665	
2017/18		667	
2018/19		629	

*September forecasts

Agenda Item 5

SCHOOL PLACES IN SOUTHPORT

A. Primary

1. Numbers and Types of Schools, January 2014

School Type	Community	CE		Catholic Aided
		Controlled	Aided	
Primary	9	1	4	3
Infant	1	-	-	1
Junior	1	-	-	-
Total	11	1	4	4

2. Number of School Places, January 2014

School Type	Community	CE		Catholic Aided
		Controlled	Aided	
Primary	3,309	210	840	1,100
Infant	360	-	-	90
Junior	480	-	-	-
Total	4,149	210	840	1,190

Grand Total	6,389
-------------	-------

3. Demand and Supply of Primary School Places 2013/14 to 2018/19

Year	Demand		Number of Places	Net Capacity
	Actual	Projected		
2013/14	6,119		6,389	6,470
2014/15		6,180		
2015/16		6,249		
2016/17		6,340		
2017/18		6,392		
2018/19		6,428		

4. Demand and Supply of Reception Places 2013/14 to 2018/19

Year	Demand		Number of Places
	Actual	Projected	
2013/14	888		942
2014/15		921	
2015/16		944	
2016/17		919	
2017/18		919	
2018/19		919	

SCHOOL PLACES IN SOUTHPORT

B. Secondary

1. Numbers and Types of Schools, January 2014

School Type	Community	CE		Catholic Aided
		Controlled	Aided	
Secondary 11-16*	4	-	-	-
Secondary 11-18	-	-	-	1
Total	4	-	-	1

*Two of these schools are academies

2. Number of School Places, January 2014

School Type	Community	CE		Catholic Aided
		Controlled	Aided	
Secondary 11-16	3,537	-	-	-
Secondary 11-18	-	-	-	1,175
Total	3,537	-	-	1,175

Grand Total	4,712
--------------------	--------------

3. Demand and Supply of Secondary School Places 2012/13 to 2017/18

Year	Demand		Number of Places	Net Capacity
	Actual	Projected*		
2013/14	4,307		4,712	4,707
2014/15		4,262		
2015/16		4,217		
2016/17		4,166		
2017/18		4,221		
2018/19		4,227		

*September forecasts

4. Demand and Supply of Year 7 Places 2012/13 to 2017/18

Year	Demand		Total Number of Places
	Actual	Projected*	
2013/14	820		922
2014/15		800	
2015/16		821	
2016/17		764	
2017/18		827	
2018/19		823	

*September forecasts

This page is intentionally left blank

School Organisation Data Book

2014/2015 to 2018/2019

CONTENTS

	Page
INTRODUCTION	5
SEFTON	6-9
Structure and Characteristics of School Provision	8
PART A: DEMOGRAPHIC INFORMATION RELEVANT TO THE SUPPLY OF SCHOOL PLACES	10-26
Trends in Pupil Numbers	12-26
Methodology Used for Forecasting Pupil Numbers	12
Trends in Primary Pupil Numbers	15
Trends in Secondary Pupil Numbers	19
Changes in School Organisation Currently in Progress	26
Primary Schools	26
Secondary Schools	26
PART B: DATA FOR GEOGRAPHICAL AREAS	27-44
Areas of Sefton	29-44
Bootle	30
Litherland	33
Crosby	35
Formby	37
Maghull and Aintree	39
Southport	41
ANNEXES	45-89
Annex 1: Pupil Numbers and School Places	47-64
Annex 2: Changes in School Organisation	65-71
Annex 3: School Places in 2014	72-84
Annex 4: Denominational Provision: the Catholic Church	84-88
Annex 5: Denominational Provision: the Church of England	89

INTRODUCTION

The data in this booklet is based on the School Census January 2014 and May 2014, the School Capacity Return 2014 (formerly known as the Surplus Places Return) and the birth data for 2012 and previous years from the Office for National Statistics (ONS). The pupil projections are the figures supplied to the Education Funding Agency as part of the School Capacity Return 2014. Part B: Data for Geographical Areas also includes the October 2014 School Census data.

Figure 1



Structure and Characteristics of School Provision

At the end of the 2013/2014 academic year there were 19 (11 to 16 and 11 to 18) secondary schools (including 7 academies, 1 free school), 1 sixth form college, 70 primary schools, 3 infant schools, 2 junior schools, 5 special schools and 4 nursery schools in Sefton. 46 primary and infant schools have nursery units. Full details of the structure and characteristics of Sefton's school provision at May 2014 are provided in Table 1.

Table 1: School Provision in Sefton

Number of Nursery Schools	4
Total Number of Maintained Primary Schools	75
Infant Schools	3
Junior Schools	2
Primary Schools	70
Primary Schools with nursery units	46
Community Primary Schools	34
Church of England Voluntary Controlled Primary Schools	6
Church of England Voluntary Aided Primary Schools	10
Catholic Voluntary Aided Primary Schools	25
Total Number of Maintained Secondary Schools	11
Community 11-16 Secondary Schools	4
Community 11-18 Secondary Schools	0
Catholic Voluntary Aided 11-16 Schools	2
Catholic Voluntary Aided 11-18 Schools	4
CE Voluntary Aided 11-16 Schools	0
CE Voluntary Aided 11-18 Schools	1
Community 6 th Form College	1
Academies	7
11 - 16	2
11 - 18	5
Free School	
11 -16	1
Total Number of Special Schools	5
Total Number of Pupil Referral Units	2

The denominational sector is very strong in Sefton, particularly in the primary phase where community schools form 45.4% of the total, 33.3% of the schools are Catholic and 21.3% are Church of England. In the Secondary phase, six of the 18 (33%) high schools are Catholic aided schools and only one high school (5%) has Church of England aided status. In 2011/12 seven of Sefton's high schools converted to academy status. The Hawthorne's Free School opened on 1 September 2012.

Pre-school provision is provided through a combination of nursery schools, nursery units in primary schools, private nurseries and playgroups etc. There are 11 Children's Centres and 8 satellite centres in some of the most deprived areas of the Borough.

At present, the size of the primary schools in Sefton varies from less than 100 pupils to 4 FE primary schools and 4 FE infant and junior schools. (Note FE:

Forms of Entry; traditionally regarded as a unit of 30 pupils). Over recent years a number of infant and junior schools have been amalgamated to form primary schools.

All except two of the 19 secondary schools in Sefton are co-educational. Two academies in Southport are single sex, one for boys and one for girls.

Ten of the secondary schools have a sixth form. South Sefton College provides post-16 education for pupils in the Bootle and Litherland areas. The remaining 11-18 schools are located in the central area of the Borough with the exception of one in Southport. In Southport the vast majority of sixth formers attend sixth form college whilst provision is made for Catholic students at Christ the King High School. In all parts of the Borough a number of sixth formers continue their studies in one of the two Further Education colleges.

There are two pupil referral units which provide education for excluded pupils and those at risk of exclusion. From 1 September 2013 the provision has been re-organised so that one provides for primary pupils (KS1-KS2) and the other secondary (KS3-KS4).

PART A

DEMOGRAPHIC INFORMATION

RELEVANT TO THE

SUPPLY OF SCHOOL PLACES

TRENDS IN PUPIL NUMBERS

Each year, the Authority produces forecasts for the following 5 years based on information from a variety of sources. The figures for primary pupil numbers are for January whilst those for secondary are for September when numbers are at their highest.

Methodology Used for Forecasting Pupil Numbers

Each year, following the completion of the January School Census Return which provides details of pupil numbers, projections of primary and secondary pupil numbers for the following years are updated.

The projections are based upon:

- the number of births in Sefton in the relevant year;
- pupil numbers, based upon School Census in January and October;
- trends in the pattern of admissions.

Primary Pupil Numbers

Forecasts of primary pupil numbers are based upon actual and estimated birth data provided by the Office for National Statistics (ONS). Each year, the LEA receives details of the actual mid year births, by ward, and all projections are updated accordingly. This however does not allow pupil numbers to be estimated for the whole of the planning period. Forecasts for these later years are based upon birth estimates provided by ONS and trends for each area.

The birth projections provided by ONS are updated every three or four years. The most recent projections available are the 2010 based figures. The most recent figures for actual births are for 2012 and this figure is lower than the ONS 1993 based projections. The complexity of the relationship is indicated by the figures in Table 2.

Table 2: Actual and Projected Births in Sefton

Year	Actual Births	ONS 1993 Based Projections	ONS 1996 Based Projections	ONS 2004 Based Projections	ONS 2010 Based Projections
1993	3,325	*	*	*	*
1994	3,176	3,536	*	*	*
1995	3,030	3,530	*	*	*
1996	3,018	3,512	*	*	*
1997	3,086	3,486	3,000	*	*
1998	2,879	3,449	3,000	*	*
1999	2,738	3,402	2,900	*	*
2000	2,701	3,354	2,900	*	*
2001	2,640	3,313	2,800	*	*
2002	2,557	3,277	2,800	*	*
2003	2,757	3,248	2,700	*	*
2004	2,727	3,226	2,700	*	*
2005	2,584	3,214	2,600	2,800	*
2006	2,713	3,208	2,600	2,700	*
2007	2,755	3,208	2,600	2,700	*
2008	2,718	3,209	2,600	2,600	*
2009	2,848	3,211	2,600	2,600	*
2010	2,862	3,212	2,600	2,600	*
2011	2,802	3,212	2,600	2,600	2,900
2012	2,795	3,212	2,600	2,700	2,900
2013			2,500	2,700	2,900
2014			2,500	2,700	2,900
2015			2,500	2,700	2,900
2016				2,700	3,000
2017				2,700	3,000
2018					3,000
2019					3,000
2020					3,000

Birth data is adjusted to relate to school years (i.e. September to the following August) rather than calendar years and these figures are provided in Table 3.

Table 3: Actual and Projected Births in Sefton

Birth Year	School Admission Year	Total Number of Births	Status of Births Data
1995/1996	2000/2001	3,024	Actual
1996/1997	2001/2002	3,052	Actual
1997/1998	2002/2003	2,983	Actual
1998/1999	2003/2004	2,809	Actual
1999/2000	2004/2005	2,720	Actual
2000/2001	2005/2006	2,672	Actual
2001/2002	2006/2007	2,599	Actual
2002/2003	2007/2008	2,657	Actual
2003/2004	2008/2009	2,742	Actual
2004/2005	2009/2010	2,656	Actual
2005/2006	2010/2011	2,649	Actual
2006/2007	2011/2012	2,734	Actual
2007/2008	2012/2013	2,737	Actual
2008/2009	2013/2014	2,783	Actual
2009/2010	2014/2015	2,855	Actual
2010/2011	2015/2016	2,833	Actual
2011/2012	2016/2017	2,799	Actual
2012/2013	2017/2018	2,700	Estimate

Where estimated, the Sefton totals are subdivided by area on the basis of the percentage of the total number of births which occurred in that area averaged over the last three years and adjusted as necessary to take account of trends; details are provided in Table 4. The area births, expressed as a percentage of Sefton births vary from year to year and this in turn affects the projected number of pupils admitted to reception classes in any year.

Table 4: Area Births as a Percentage of Sefton Births in 2012

Area	% of Sefton Births
Bootle	24.9
Litherland	11.4
Crosby	16.2
Formby	5.0
Maghull & Aintree	10.3
Southport	32.2
SEFTON	100.0

Overall reception pupil numbers are then determined by establishing the relationship between the number of pupils who actually entered reception classes in the last three years and the number of births in the appropriate preceding years and then applying the three-year average to the births data.

For Sefton as a whole, this results in a slight increase in the number of pupils for whom primary school places must be provided. This increase in numbers varies slightly from year to year and is not evenly distributed across the different areas of the Borough as Table 5 shows.

Table 5: Relationship between Births and Intake into Reception Classes, 2013

Area	Reception Year Intake as % of Births in Appropriate Preceding Year
Bootle	85.0
Litherland	78.82
Crosby	118.75
Formby	132.75
Maghull & Aintree	157.75
Southport	99.10
SEFTON	104.63

Several factors contribute to this increase in pupil numbers. The shape of the Borough of Sefton and the extent to which a number of Sefton schools are located close to centres of population in neighbouring LEAs have resulted in a situation whereby a large number of extra-district pupils are able to gain admission to Sefton schools on distance criteria. In addition, there is a marked south-north population movement within Sefton and the movement of families impacts upon the demand for school places in both the origin and destination

areas. In the southern part of the Borough pupil turnover levels are very high. In some primary schools less than half of the pupils who entered as reception pupils are still on roll in Year 6. An increasing number of pupils are being admitted to Sefton schools from abroad, in particular from Eastern Europe, and these numbers can have a considerable effect on pupil projections.

The projected total number of primary pupils is calculated for each year by moving forward the numbers in the existing primary year groups and incorporating the projected number of reception pupils to be admitted in that year.

Secondary Pupil Numbers

Forecasts of secondary pupil numbers are calculated in a similar way to primary pupil numbers but are based upon the Year 6 cohort and the relationship between this and the intake into secondary schools.

At Authority level, the number of pupils admitted to Year 7 classes in secondary schools in September each year is slightly higher than the Year 6 cohort that left the primary sector at the end of the preceding term. However, at area level the pattern is one of contrasts, with some areas gaining large numbers of pupils whilst others lose significant numbers. Details for the cohort that transferred to the secondary phase in September 2013 are provided in Table 6.

Table 6: Changes in Pupil Numbers at Transition from Primary to Secondary Schools in 2013

Area	Year 7 Pupil Numbers (September 2013) as a % of Year 6 Pupil Numbers (January 2013)
Bootle	90.0
Litherland	67.0
Crosby	112.5
Formby	127.9
Maghull & Aintree	131.7
Southport	93.4
SEFTON	103.6

The projected total number of secondary pupils is calculated for each year by moving forward the numbers in the existing secondary year groups and incorporating the projected numbers of Year 7 pupils and post 16 pupils. However, as surplus places increase in some schools whilst other more popular schools remain full, adjustments are made to pupil projections to more accurately reflect these emerging trends.

Trends in Primary Pupil Numbers

Total Number of Primary Pupils

In recent years, the total number of primary pupils in Sefton peaked at 25,640 in the 1995/1996 academic year after a period of steady growth. Since then, numbers have decreased until ²Page 59 when they rose slightly and the

Authority's current projections are for this trend to continue. Figure 2 and Table 7 provide full details of the actual (to January 2014) and projected total primary pupil numbers.

Figure 2: Primary Pupil Numbers in Sefton from 1996 to 2019

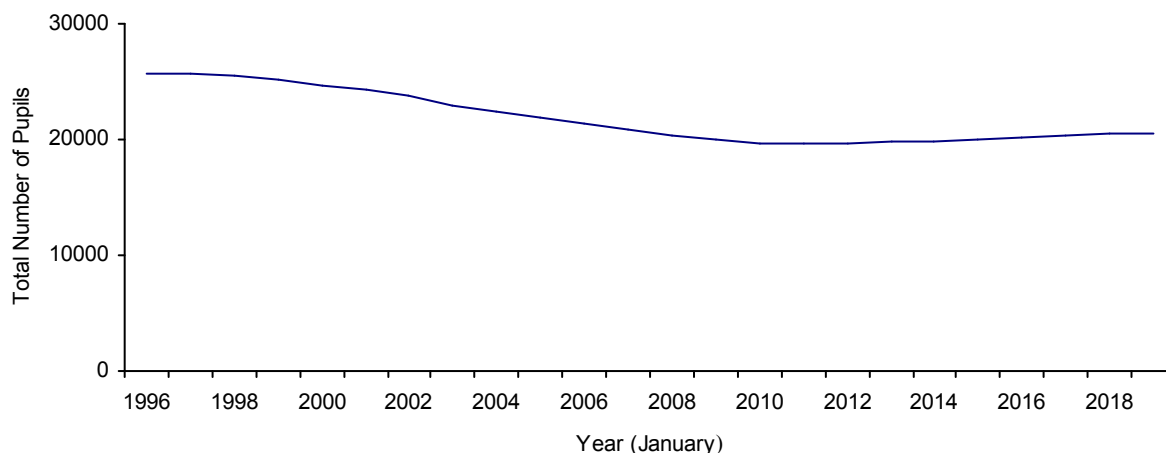


Table 7: Primary Pupil Numbers in Sefton from 1996 to 2019

Academic Year	Total Number of Primary Pupils (January)
1996/1997	25,613
1997/1998	25,487
1998/1999	25,128
1999/2000	24,666
2000/2001	24,233
2001/2002	23,708
2002/2003	23,005
2003/2004	22,423
2004/2005	21,839
2005/2006	21,324
2006/2007	20,814
2007/2008	20,319
2008/2009	19,945
2009/2010	19,725
2010/2011	19,668
2011/2012	19,736
2012/2013	19,742
2013/2014	19,903
2014/2015	20,046*
2015/2016	20,241*
2016/2017	20,429*
2017/2018	20,499*
2018/2019	20,548*

* Projected

Reception Pupil Numbers

During this period of a reducing total number of primary pupils, the number of pupils admitted to reception classes has fluctuated although the general trend is one of increased admission up to the 1995/96 academic year and a reduction in following years. It is anticipated that admission numbers will stabilise at

approximately 2,800 - 2,900 for the period of this Plan. Full details of actual and projected admission numbers for reception classes are provided in Figure 3 and Table 8.

Figure 3: Reception Pupil Numbers in Sefton from 1998 to 2019

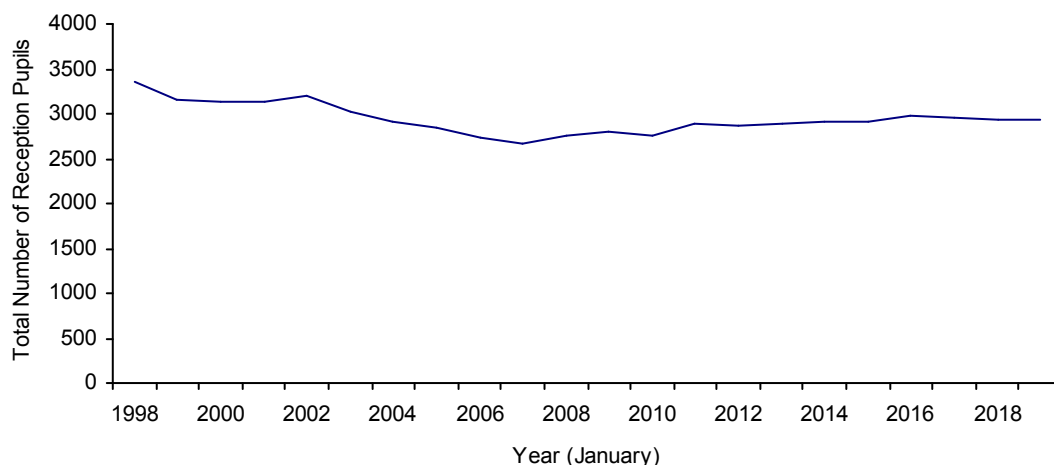


Table 8: Reception Pupil Numbers in Sefton from 1999 to 2019

Academic Year	Total Number of Reception Pupils (January)
1999/2000	3,127
2000/2001	3,143
2001/2002	3,190
2002/2003	3,026
2003/2004	2,910
2004/2005	2,842
2005/2006	2,730
2006/2007	2,668
2007/2008	2,753
2008/2009	2,810
2009/2010	2,754
2010/2011	2,883
2011/2012	2,874
2012/2013	2,893
2013/2014	2,910
2014/2015	2,913*
2015/2016	2,983*
2016/2017	2,955*
2017/2018	2,932*
2018/2019	2,932*

* Projected

The planning of school places for reception is undertaken in the context of the Government's requirement to keep infant class sizes at a maximum of 30 pupils.

Variations within Sefton

Detailed information for the areas of the Borough is provided in Table 9.
Table 10 provides detailed projections for the different areas

Table 9: Primary Pupil Numbers in Sefton, by Area, from 1999 to 2019

Year (January)	Bootle	Litherland	Crosby	Formby	Maghull & Aintree	Southport	Totals
1999	5,443	2,583	4,565	2,018	3,725	6,794	25,128
2000	5,271	2,499	4,468	2,015	3,663	6,750	24,666
2001	5,108	2,417	4,401	2,001	3,619	6,686	24,233
2002	4,916	2,338	4,300	1,955	3,533	6,666	23,708
2003	4,662	2,209	4,165	1,927	3,473	6,569	23,005
2004	4,483	2,116	4,033	1,881	3,394	6,516	22,423
2005	4,252	2,088	3,873	1,894	3,322	6,410	21,839
2006	4,085	2,102	3,762	1,843	3,263	6,269	21,324
2007	3,870	2,043	3,680	1,801	3,215	6,205	20,814
2008	3,745	1,960	3,595	1,780	3,158	6,081	20,319
2009	3,599	1,766	3,647	1,780	3,142	6,011	19,945
2010	3,570	1,729	3,579	1,769	3,132	5,946	19,725
2011	3,477	1,736	3,563	1,757	3,126	6,009	19,668
2012	3,371	1,727	3,658	1,733	3,154	6,093	19,736
2013	3,290	1,734	3,664	1,757	3,202	6,095	19,742
2014	3,362	1,762	3,714	1,740	3,206	6,119	19,903
2015	3,399*	1,809*	3,742*	1,722*	3,194*	6,180*	20,046*
2016	3,507*	1,843*	3,753*	1,697*	3,192*	6,249*	20,241*
2017	3,625*	1,858*	3,757*	1,665*	3,184*	6,340*	20,429*
2018	3,703*	1,856*	3,750*	1,621*	3,177*	6,392*	20,499*
2019	3,780*	1,864*	3,730*	1,553*	3,193*	6,428*	20,548*

*Projected

Table 10: Reception Pupil Numbers in Sefton, by Area, from 1999 to 2019

Year (January)	Bootle	Litherland	Crosby	Formby	Maghull & Aintree	Southport	Totals
1999	663	326	541	237	468	920	3,155
2000	693	301	543	258	457	875	3,127
2001	635	312	600	233	446	917	3,143
2002	666	314	574	235	458	943	3,190
2003	652	286	534	256	431	867	3,026
2004	583	266	514	249	443	855	2,910
2005	564	291	457	262	423	845	2,842
2006	543	292	468	209	414	804	2,730
2007	458	268	450	218	429	845	2,668
2008	506	277	487	228	431	824	2,753
2009	492	275	519	231	445	848	2,810
2010	474	261	509	231	460	819	2,754
2011	515	265	530	240	456	877	2,883
2012	490	253	533	267	445	886	2,874
2013	507	269	526	222	474	895	2,893
2014	538	267	534	237	446	888	2,910
2015	509*	262*	548*	234*	439*	921*	2,913*
2016	558*	270*	529*	232*	450*	944*	2,983*
2017	558*	264*	527*	223*	464*	919*	2,955*
2018	558*	264*	527*	200*	464*	919*	2,932*
2019	558*	264*	527*	200*	464*	919*	2,932*

* Projected

Trends in Secondary Pupil Numbers

Total Number of Secondary Pupils

Until the 2002/03 academic year, the total number of secondary pupils in Sefton increased each year as large cohorts from primary schools transferred through into the secondary sector. There was a reduction in numbers in 2003/04 and projections for the period covered by this Plan indicate that this trend for reductions in pupil numbers will continue in future years until 2017/18 when a slight increase is predicted. Details of the actual (to January 2014) and projected total secondary pupil numbers are provided in Figure 4 and Table 11. All forecasts for secondary pupil numbers are for September, the start of the academic year, as that is when school rolls are at a maximum.

Figure 4: Secondary Pupil Numbers in Sefton from 1999 to 2018/19

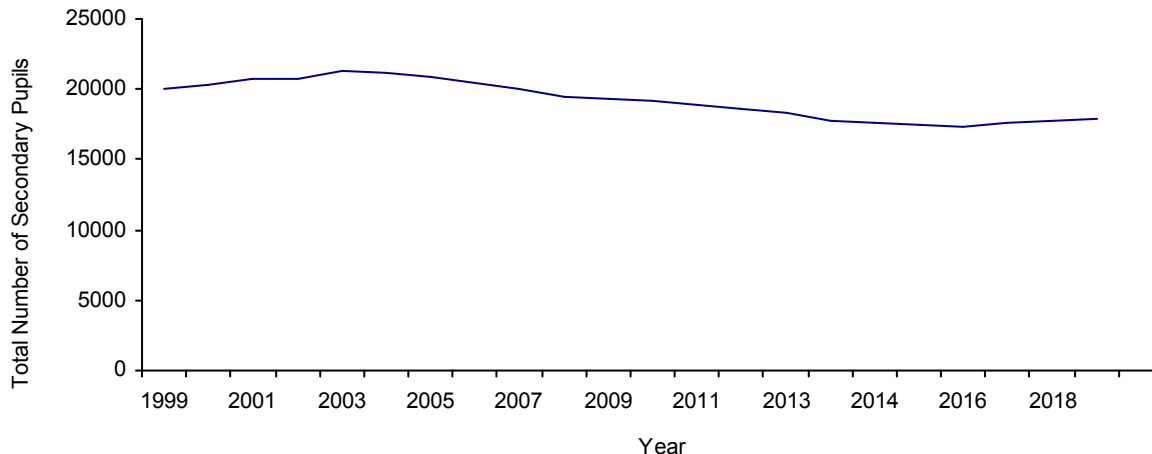


Table 11: Secondary Pupil Numbers in Sefton from 1999 to 2018/19

Year (January)	Total Number of Secondary Pupils
1999	20,057
2000	20,296
2001	20,676
2002	20,780
2003	21,281
2004	21,222
2005	20,919
2006	20,416
2007	19,962

2008	19,469
2009	19,300
2010	19,207
2011	18,869
2012	18,603
2013	18,365
2014	17,895
2014*	17,679
2015*	17,411
2016*	17,242
2017*	17,353
2018*	17,484
2019*	17,601
2020*	17,738

* September forecasts

At Authority level, the reduction in secondary pupil numbers is continuing as the smaller cohorts admitted to primary schools in the last few years begin to feed through into the secondary sector during the period covered by this Plan but they start to rise again towards the end of this period.

Year 7 Pupil Numbers

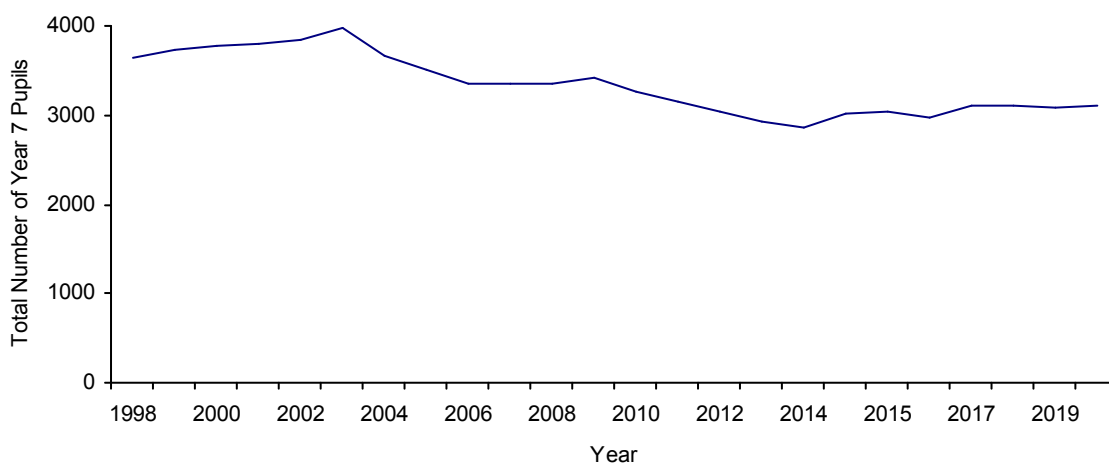
The number of pupils admitted to Year 7 classes in secondary schools in Sefton peaked in the 2002/03 academic year, with a reduction of pupil numbers in 2003/04. However, as births and subsequently primary pupil numbers stabilise this will in turn affect secondary pupil numbers in future years. Details of actual and projected admission numbers for Year 7 classes are provided in Table 12 and Figure 5.

Table 12: Year 7 Pupil Numbers in Sefton 1999 to 2019/20

Year (January)	Total Number of Year 7 Pupils
1999	3,728
2000	3,769
2001	3,797
2002	3,850
2003	3,971
2004	3,661
2005	3,512
2006	3,362
2007	3,358
2008	3,349
2009	3,430
2010	3,265
2011	3,141
2012	3,049
2013	2,931
2014	2,859
2014*	3,017
2015*	3,047
2016*	2,974
2017*	3,112
2018*	3,097
2019*	3,073
2020*	3,101

* September forecasts

Figure 5: Year 7 Pupil Numbers in Sefton 1999 to 2019/20



Sixth Form Pupil Numbers

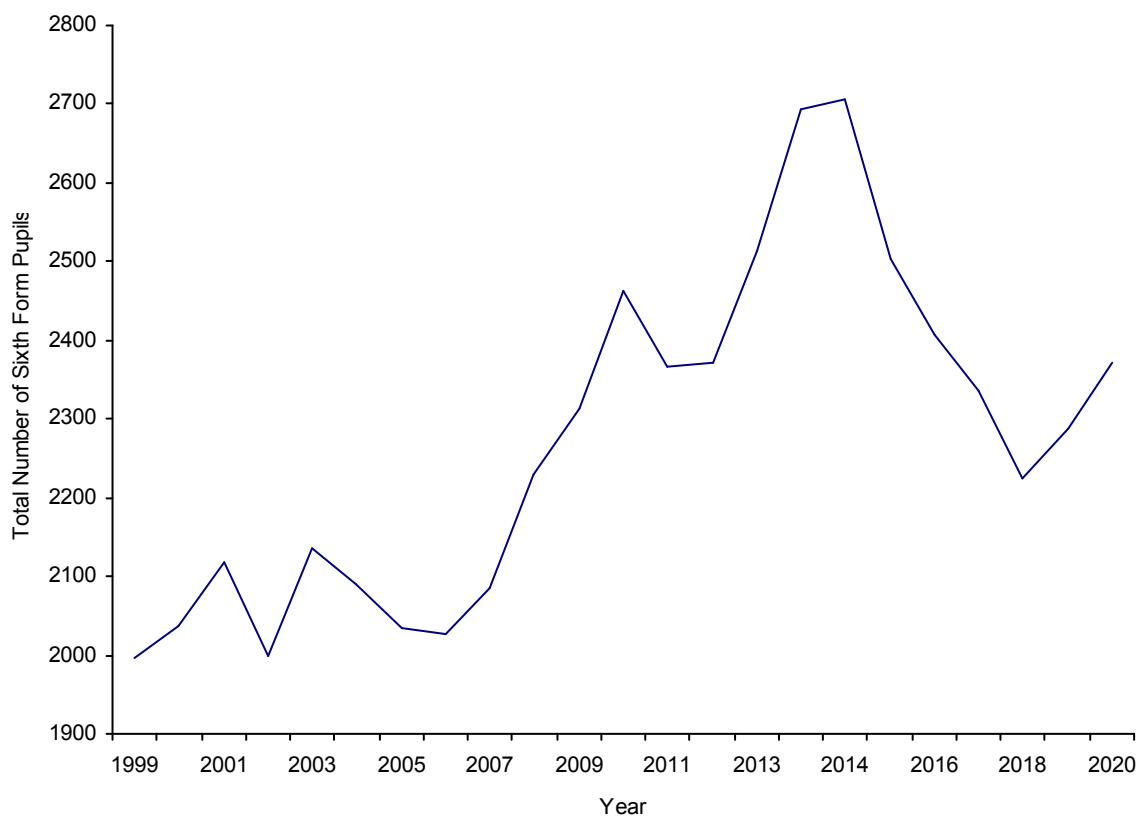
The number of 6th form pupils in maintained schools is expected to continue to fluctuate during the period covered by this Plan. This reflects the size of the contributory cohorts in those parts of the Borough where post-16 provision is school based and includes pupils attending South Sefton College which caters for pupils from all five schools in South Sefton. These projections are based upon current staying on rates which are expected to increase over the next few years as the participation age is raised to 18 by 2015. Ten of the 19 secondary schools in Sefton provide post-16 places. In Formby and Maghull and Aintree all secondary schools have a sixth form and in Southport provision is restricted to the Catholic sector. It is anticipated that the sixth form centre may affect post-16 numbers in the south of the Borough and could attract more students from the Liverpool area. This effect has not been taken into account in the details of projected sixth form pupil numbers which are provided in Table 13 and Figure 6.

Table 13: Sixth Form Pupil Numbers in Sefton 1999 to 2019/20

Year (January)	Total Number of Sixth Form Pupils
1999	1,997
2000	2,038
2001	2,117
2002	1,998
2003	2,136
2004	2,089
2005	2,034
2006	2,027
2007	2,085
2008	2,230
2009	2,312
2010	2,463
2011	2,367
2012	2,371
2013	2,513
2014	2,694
2014*	2,707
2015*	2,504
2016*	2,407
2017*	2,335
2018*	2,225
2019*	2,288
2020*	2,371

* September forecasts

Figure 6: Sixth Form Pupil Numbers in Sefton 1999 to 2019/20



Projected numbers are for September, the start of the academic year, when sixth form pupil numbers are at their highest. The number falls by the time of the Schools Census in January: some pupils decide not to continue with their chosen course of study, others find employment. As a result of this the sixth form pupil numbers may be less than projected.

Variations within Sefton

The number of secondary pupils within Sefton as a whole, and also in the Bootle, Litherland, Crosby and Maghull and Aintree areas, peaked in the 2002/03 academic year. The peak occurred in Formby and Southport a year later in 2003/04.

Table 14: Secondary Pupil Numbers in Sefton, by Area, from 1999 to 2019/2020

Year (January)	Bootle	Litherland	Crosby	Formby	Maghull & Aintree	Southport	Totals
1999	3,240	1,651	4,356	1,970	4,209	4,631	20,057
2000	3,269	1,686	4,394	1,988	4,280	4,679	20,296
2001	3,345	1,769	4,506	1,981	4,280	4,795	20,676
2002	3,413	1,778	4,533	1,985	4,194	4,877	20,780
2003	3,554	1,829	4,643	2,100	4,226	4,929	21,281
2004	3,529	1,763	4,638	2,155	4,202	4,935	21,222
2005	3,413	1,730	4,557	2,116	4,184	4,919	20,919
2006	3,273	1,647	4,375	2,131	4,174	4,816	20,416
2007	3,142	1,562	4,242	2,230	4,171	4,615	19,962
2008	2,929	1,458	4,088	2,310	4,197	4,487	19,469
2009	2,776	1,395	4,097	2,296	4,210	4,526	19,300
2010	2,367	1,831	4,066	2,245	4,209	4,489	19,207
2011	2,273	1,765	4,026	2,180	4,159	4,466	18,869
2012	2,234	1,707	3,981	2,162	4,089	4,430	18,603
2013	2,388	1,434	4,015	2,116	4,058	4,354	18,365
2014	2,235	1,420	3,879	2,149	3,905	4,307	17,895
2014*	2,131	1,447	3,877	2,095	3,867	4,262	17,679
2015*	2,051	1,418	3,849	2,051	3,824	4,217	17,411
2016*	1,986	1,403	3,857	2,013	3,817	4,166	17,242
2017*	1,996	1,400	3,927	1,989	3,820	4,221	17,353
2018*	2,025	1,396	4,028	1,976	3,832	4,227	17,484
2019*	2,050	1,422	4,064	1,946	3,866	4,253	17,601
2020*	2,137	1,433	4,120	1,908	3,886	4,254	17,738

* September forecasts

As detailed elsewhere in this document, these projections are based on the transfer of pupils between Year 6 and Year 7 over the last three years. However, recent patterns of admission applications suggest that this relationship between the Year 6 cohort and corresponding Year 7 admissions is changing. As pupil numbers fall more places will become available and schools in some areas of the Borough may continue to be oversubscribed and take an increasing number of pupils from outside their traditional catchment areas. This will magnify the fall in Year 7 pupil numbers in some areas of the Borough whilst reducing the effect in areas such as Formby, Maghull and Crosby. Adjustments have therefore been made to the raw data to reflect

these emerging trends. Full details of actual and projected numbers are provided in Table 15.

Table 15: Year 7 Pupil Numbers in Sefton, by Area, from 1999 to 2019/20

Year (January)	Bootle	Litherland	Crosby	Formby	Maghull & Aintree	Southport	Totals
1999	684	358	750	336	687	912	3,728
2000	662	357	795	331	706	918	3,769
2001	689	358	765	312	694	974	3,797
2002	704	353	778	351	691	973	3,850
2003	763	366	808	370	711	953	3,971
2004	646	301	765	359	692	898	3,661
2005	564	311	700	336	703	897	3,512
2006	548	274	639	334	685	882	3,362
2007	569	256	650	354	690	839	3,358
2008	509	273	671	354	692	848	3,347
2009	507	268	701	354	705	895	3,430
2010	475	252	658	359	684	851	3,279
2011	428	205	627	357	712	812	3,141
2012	409	224	619	349	638	810	3,049
2013	426	196	616	299	636	758	2,931
2014	399	154	568	341	577	820	2,859
2014*	406	170	688	317	636	800	3,017
2015*	382	202	686	322	634	821	3,047
2016*	376	189	659	321	665	764	2,974
2017*	436	187	688	307	667	827	3,112
2018*	425	181	706	333	629	823	3,097
2019*	431	210	678	282	656	816	3,073
2020*	469	201	685	295	631	820	3,101

* September forecasts

These forecasts are based upon the number of pupils transferring from primary schools in the relevant years and therefore reflect variations in the size of year groups.

The number of sixth form pupils generally increased over the period to the 2000/01 academic year and numbers have since fluctuated, this is expected to continue over the next few years although this may vary in different areas of the Borough. The number of pupils in sixth forms will include pupils admitted from other areas. Details of actual and projected post 16 pupil numbers are provided in Table 16.

Table 16: Sixth Form Pupil Numbers in Sefton, by Area, from 1999 to 2018

Year (January)	Bootle & Litherland	Crosby	Formby	Maghull & Aintree	Southport	Totals
1999	150	660	269	723	195	1,997
2000	156	635	300	773	174	2,038
2001	167	714	293	796	147	2,117
2002	140	707	284	728	139	1,998
2003	140	738	365	749	144	2,136
2004	132	701	397	721	138	2,089
2005	142	712	351	695	134	2,034
2006	163	682	351	697	134	2,027
2007	134	705	411	702	133	2,085
2008	157	698	483	751	141	2,230
2009	161	756	493	752	150	2,312
2010	357	730	450	770	133	2,463
2011	474	653	393	697	150	2,367
2012	516	630	392	668	165	2,371
2013	550	711	395	692	165	2,513
2014	584	769	426	680	235	2,694
2014*	603	755	419	688	242	2,707
2015*	520	674	412	694	203	2,504
2016*	494	640	408	662	203	2,407
2017*	495	638	378	640	184	2,335
2018*	466	600	376	601	182	2,225
2019*	453	647	381	615	192	2,288
2020*	465	704	370	638	194	2,371

* September forecasts

CHANGES IN SCHOOL ORGANISATION CURRENTLY IN PROGRESS

Details of recent changes in school organisation are provided in Annex 2.

Primary Schools

The age range has been changed at six primary schools with effect from 1 September 2013 to allow them to provide additional nursery places for 2 year olds as part of the Government's Two Year Old Offer. The following schools now have additional nursery places for two year olds:

Christ Church CE Primary, Bootle – up to 16 places
Thomas Gray Primary, Bootle – up to 24 places
St Elizabeth's Catholic Primary, Litherland – up to 8 places
Lander Road Primary, Litherland – up to 16 places
Hudson Primary, Maghull – up to 16 places
Bishop David Sheppard CE Primary, Southport – up to 42 places

The number and distribution of school places in Sefton primary schools will continue to be reviewed on an annual basis.

Additional primary places are being provided at Birkdale Primary and Linaker Primary with effect from 1 September 2013. There are also plans to add additional places at Great Crosby Primary School with effect from 1 September 2015.

Secondary Schools

The number and distribution of school places in Sefton secondary schools will continue to be reviewed on an annual basis.

PART B

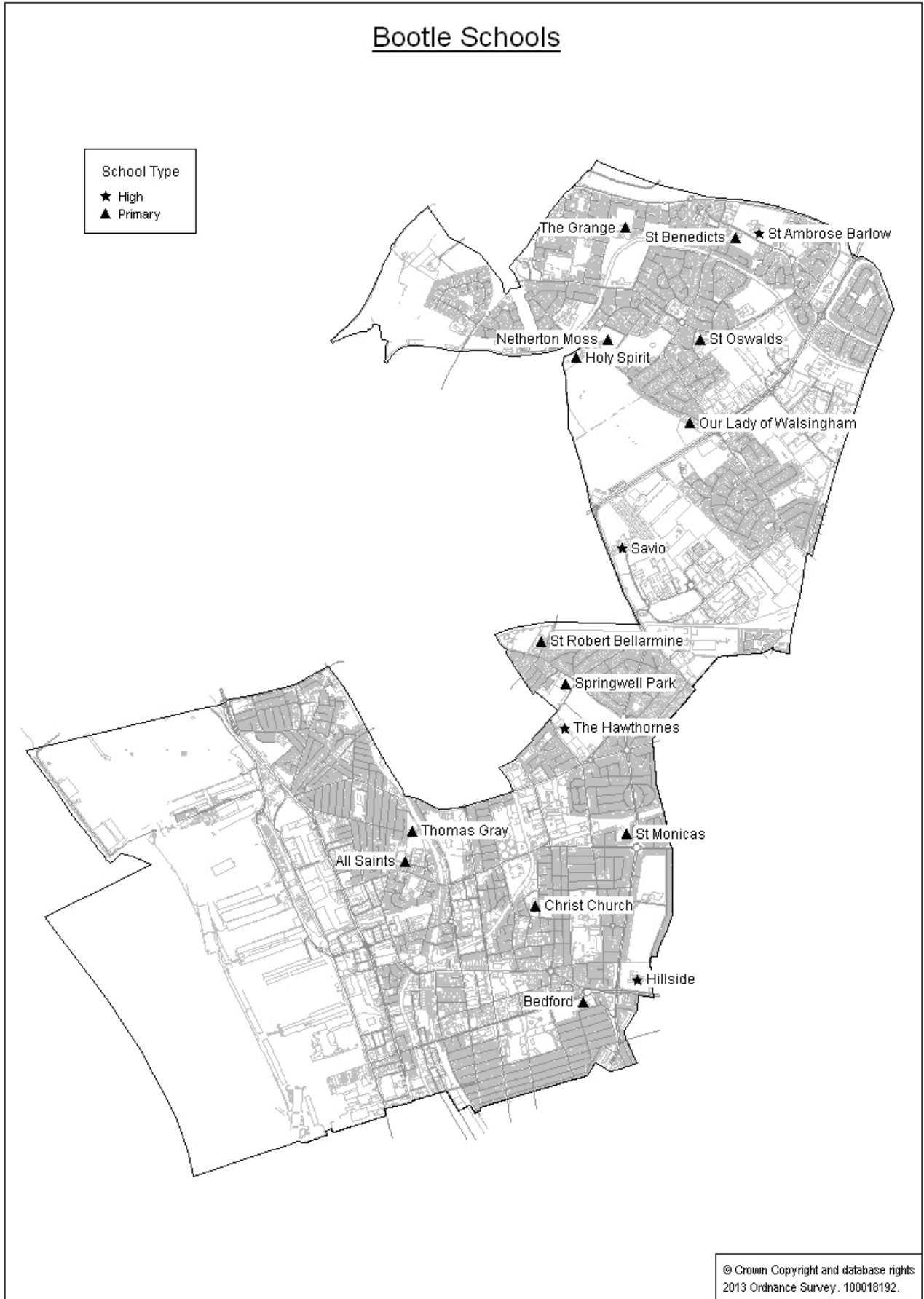
DATA FOR

GEOGRAPHICAL

AREAS

AREAS OF SEFTON





Numbers on Roll 2005 to 2014

School	January School Census												SC NOR October 2014 – Year Groups								
	N/S	AN	2005	2006	2007	2008	2009	2010	2011	2012	2013	2014	R	Y1	Y2	Y3	Y4	Y5	Y6	Total	
Bootle																					
Bedford Community Primary		60	375	390	373	381	369	392	382	387	390	398	60	59	58	60	61	56	52	406	
Daleacre Community Primary	N		44	0	0	0	0	0	0	0	0	0	Closed								
Grange Community Primary	NS	30	229	236	231	236	240	243	250	234	245	259	33	36	43	35	42	31	44	264	
Linacre Community Primary	N	30	190	192	176	168	164	176	176	168	169	170	27	28	20	28	25	18	19	165	
Netherton Moss Community Primary	N	30	177	195	165	151	145	142	133	115	133	149	30	29	23	8	14	20	21	145	
Netherton Park Community Primary	N		53	0	0	0	0	0	0	0	0	0	Closed								
Orrell Community Primary			140	0	0	0	0	0	0	0	0	0	Closed								
Roberts Community Primary	N		154	0	0	0	0	0	0	0	0	0	Closed								
Springwell Park Community Primary	N	60		288	289	285	271	264	265	283	279	296	50	59	41	49	48	28	33	308	
Thomas Gray Community Junior			0	0	0	0	0	0	0	0	0	0	Amalgamated								
Thomas Gray Community Infant	N		0	0	0	0	0	0	0	0	0	0	Amalgamated								
Thomas Gray Community Primary	N	30	285	300	290	270	224	197	181	186	178	197	30	30	25	25	26	29	27	192	
Trinity Church CE Primary	N	45	349	378	360	355	353	340	324	299	298	303	43	44	42	41	44	35	44	293	
Mary's CE Primary	N		96	0	0	0	0	0	0	0	0	0	Closed								
Oswald's CE Primary	N	30	199	208	199	192	193	196	189	194	189	198	28	29	30	29	25	30	28	199	
St Mary's Spirit Catholic Primary	N	30	187	191	188	183	188	182	184	173	160	165	20	30	30	17	30	28	23	178	
Our Lady of Walsingham Junior			209	221	0	0	0	0	0	0	0	0	Amalgamated								
Our Lady of Walsingham Infant	N		141	133	0	0	0	0	0	0	0	0	Amalgamated								
Our Lady of Walsingham Primary	N	30			318	309	288	272	240	229	214	199	29	30	28	28	24	27	30	196	
St Benet's Catholic Primary	N		192	0	0	0	0	0	0	0	0	0	Closed								
St Benedict's Catholic Primary	N	30		323	297	272	258	242	235	219	211	203	30	30	29	28	25	28	31	201	
St James' Catholic Primary	N		200	214	0	0	0	0	0	0	0	0	Closed								
St Joan of Arc Catholic Primary	N		159	194	0	0	0	0	0	0	0	0	Closed								
All Saints Catholic Primary	N	60			387	363	340	339	321	301	293	288	49	45	45	46	32	28	33	278	
St Raymond's Catholic Primary			142	0	0	0	0	0	0	0	0	0	Closed								
St Monica's Catholic Primary	N	60	394	423	397	382	372	384	392	387	383	386	60	60	58	60	48	54	51	391	
St Robert Bellarmine Catholic Primary	N	30	195	199	200	198	194	201	205	196	202	211	32	30	30	28	29	30	28	207	
St Winefride & St Richard's Catholic Primary	N		142	0	0	0	0	0	0	0	0	0	Closed								
Total			555	4252	4085	3870	3745	3599	3570	3477	3371	3344	3422	521	539	502	482	473	442	464	3423

N = Nursery
S = Special Unit
AN = Admission Number (for 2014/15 academic year)
SC = School Census

Numbers on Roll 2005 to 2014

School	January School Census											SC NOR October 2013 – Year Groups							
	AN	2005	2006	2007	2008	2009	2010	2011	2012	2013	2014	Y7	Y8	Y9	Y10	Y11	Y12	Y13	Total
Bootle																			
Bootle High		639	574	513	411	327	0	0	0	0	0				Closed				
Hillside High	194	863	832	848	844	845	846	879	905	917	907	152	176	180	168	189			865
St George of England High		631	600	564	484	451	415	342	271	0	0				Closed				
St Ambrose Barlow Catholic High	120	436	453	425	426	434	438	430	437	427	385	77	71	86	70	77			381
Savio Salesian College	135	844	814	792	764	719	668	622	621	617	582	89	102	109	121	104			525
The Hawthorne's Free School	120	0	0	0	0	0	0	0	0	427	361	59	48	40	66	98			311
Total	569	3413	3273	3142	2929	2776	2367	2273	2234	2388	2235	377	397	415	425	468			2082

AN = Admission Number (for 2014/15 academic year)

SC = School Census

Data for South Sefton College is included in the Litherland area data.

Litherland Schools



School Type
★ High
▲ Primary

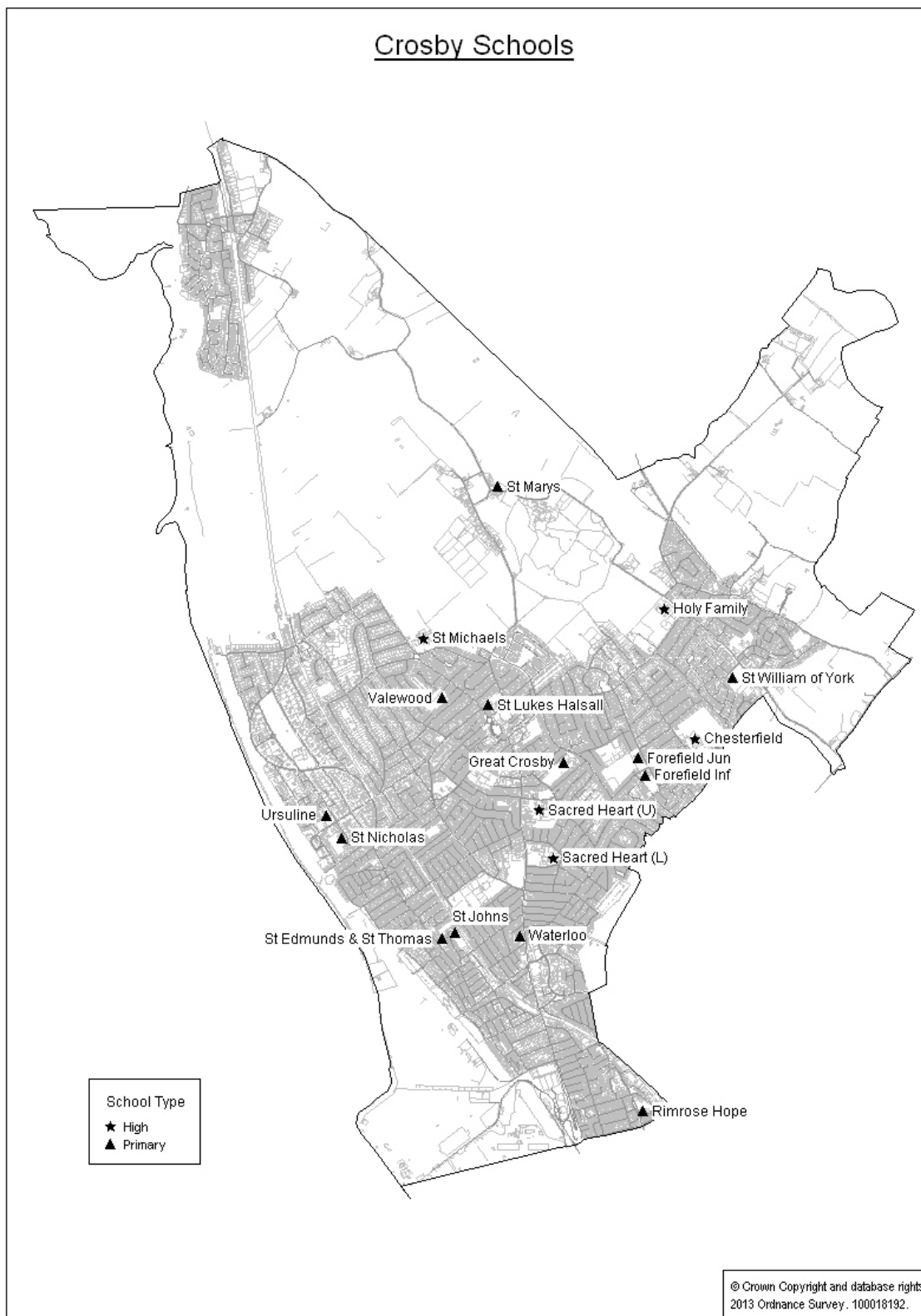
© Crown Copyright and database rights
2013 Ordnance Survey. 100018192.

Numbers on Roll 2005 to 2014

School	January School Census												SC NOR October 2014 – Year Groups							
	N/S	AN	2005	2006	2007	2008	2009	2010	2011	2012	2013	2014	R	Y1	Y2	Y3	Y4	Y5	Y6	Total
Litherland																				
Beach Road Community Primary			153	179	165	144	0	0	0	0	0	0	Closed							
Hatton Hill Community Primary	N	60	348	342	339	320	314	307	307	309	310	307	54	45	55	45	46	41	42	328
Lander Road Community Primary	N	30	215	216	214	204	205	204	207	194	195	204	30	30	30	30	31	32	30	213
Litherland Moss Community Primary	N	30	115	113	102	104	101	99	110	112	110	129	19	20	22	20	18	23	21	143
St Philip's CE Primary		30	230	232	225	212	197	202	198	203	200	202	27	30	29	29	26	28	29	198
English Martyrs Catholic Primary	N	60	413	412	412	413	411	411	403	415	416	413	60	62	58	60	59	56	60	415
Our Lady Queen of Peace Catholic	N	30	130	134	122	112	103	92	85	98	93	102	19	15	12	18	12	12	11	99
Our Lady Star of the Sea Catholic	N	30	145	163	148	144	143	124	128	108	117	112	20	23	19	17	23	12	12	126
St Elizabeth's Catholic Primary	N	60	339	311	316	307	292	290	298	288	293	293	42	48	49	37	50	41	40	307
Total		330	2088	2102	2043	1960	1766	1729	1736	1727	1734	1762	271	273	274	256	265	245	245	1829

School	January School Census											SC NOR October 2014 – Year Groups							
	AN	2005	2006	2007	2008	2009	2010	2011	2012	2013	2014	Y7	Y8	Y9	Y10	Y11	Y12	Y13	Total
Litherland																			
Litherland High	240	867	839	818	784	752	956	889	876	884	836	135	154	175	169	146			779
St Wilfrid's Catholic High		863	808	744	674	643	568	402	315	0	0	Closed							
South Sefton College	(340)	0	0	0	0	0	307	474	516	550	584						328	256	584
Total	240	1730	1647	1562	1458	1395	1831	1765	1707	1434	1420	135	154	175	169	146	328	256	1363

N = Nursery
S = Special Unit
AN = Admission Number (for 2014/15 academic year)
SC = School Census

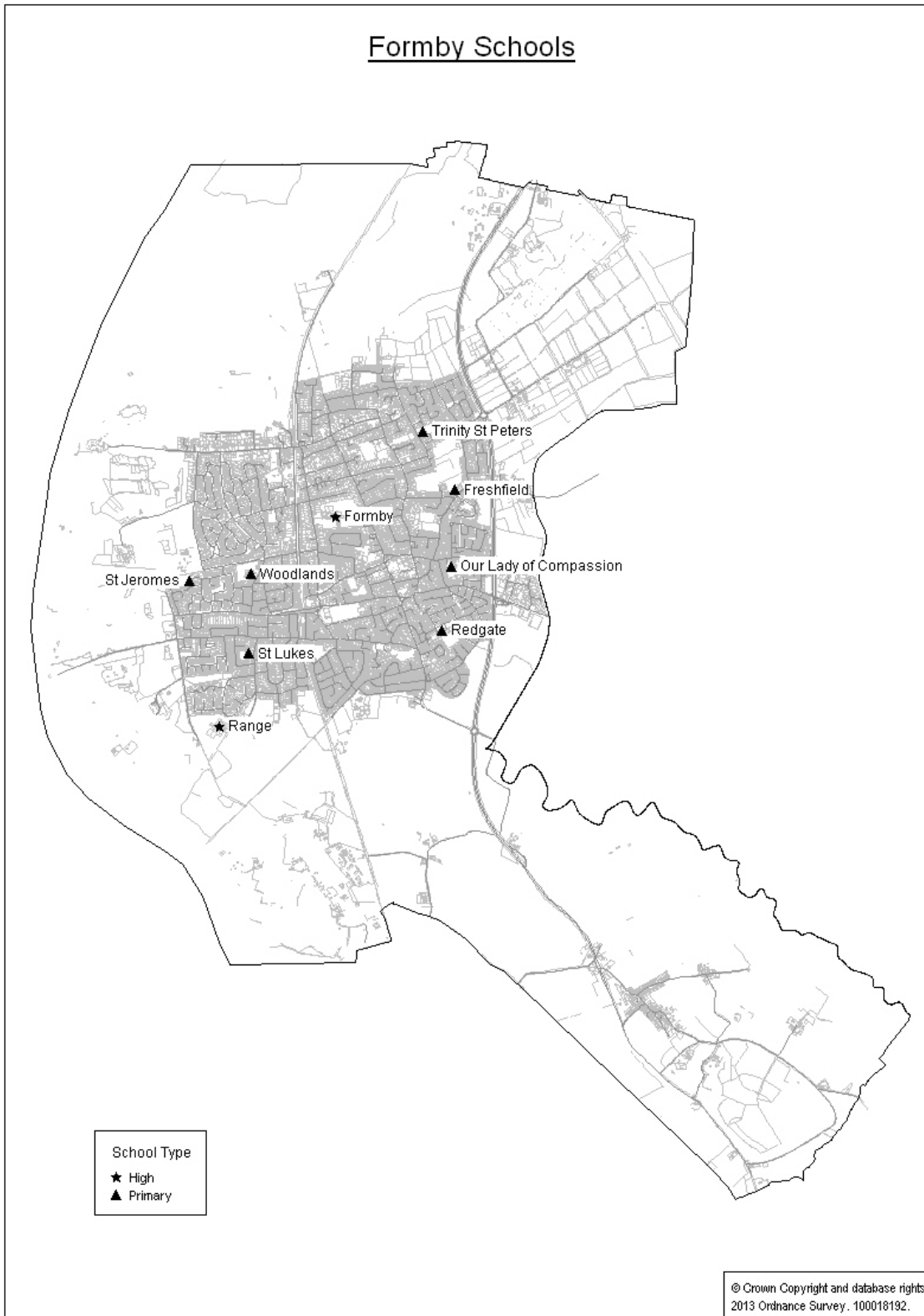


Numbers on Roll 2005 to 2014

School	January School Census												SC NOR October 2014 – Year Groups							
	N/S	AN	2005	2006	2007	2008	2009	2010	2011	2012	2013	2014	R	Y1	Y2	Y3	Y4	Y5	Y6	Total
Crosby																				
Forefield Community Junior		90	386	391	396	385	370	358	351	356	358	357				89	93	90	87	359
Forefield Community Infant		90	259	239	239	239	252	267	271	271	270	270	90	90	90					270
Rawson Road Community Primary			103	0	0	0	0	0	0	0	0	0				Closed				
Thornton Community Primary			180	153	140	124	110	24	0	0	0	0				Closed				
Valewood Community Primary		30	181	196	201	211	210	207	206	211	204	205	29	30	30	31	30	30	29	209
Waterloo Community Primary	S	60	455	424	404	354	319	311	319	343	354	384	59	53	50	60	53	56	66	397
Rimrose Hope CE Primary	NS	45					267	254	266	271	286	288	41	39	38	40	44	39	35	276
St John's CE Primary		30	130	159	143	146	137	132	127	144	172	178	28	29	25	26	25	19	21	173
St Luke's Halsall CE Primary	N	30	234	232	213	214	207	213	202	198	207	209	29	30	31	31	30	30	30	211
St Nicholas' CE Primary		30	184	192	191	197	193	197	198	205	205	205	30	30	29	30	30	29	29	207
William Gladstone CE Primary			150	154	136	137	0	0	0	0	0	0				Closed				
eat Crosby Catholic Primary	N	90	626	621	635	634	632	631	634	640	636	636	89	90	91	91	90	89	90	630
Edmund's & St Thomas' Catholic Primary	N	45	308	325	313	303	299	308	304	317	319	320	45	45	47	43	44	42	43	309
Mary's Catholic Primary		15	87	94	94	93	90	92	100	102	101	98	15	15	15	15	15	16	14	105
William of York Catholic Primary	N	30	201	197	178	162	176	193	194	197	180	194	30	30	24	31	30	16	31	192
Ursuline Catholic Primary		60	389	385	397	396	385	392	391	403	412	412	59	59	60	60	60	59	60	417
Total		555	3873	3762	3680	3595	3647	3579	3563	3658	3704	3756	544	540	530	547	544	515	535	3755

School	January School Census											SC NOR October 2014 – Year Groups								
	AN	2005	2006	2007	2008	2009	2010	2011	2012	2013	2014		Y7	Y8	Y9	Y10	Y11	Y12	Y13	Total
Crosby																				
Chesterfield High	224	1341	1285	1276	1252	1291	1304	1279	1278	1259	1177		191	173	186	203	217	109	72	1151
Manor High		881	0	0	0	0	0	0	0	0	0				Closed					
St Michael's CE High	138		819	731	649	571	534	510	478	542	558		95	97	99	71	100	34	30	526
Holy Family Catholic High	135	963	885	833	782	767	782	832	825	786	743		134	74	123	111	101	97	87	727
Sacred Heart Catholic High	216	1372	1386	1402	1405	1468	1446	1405	1400	1428	1401		216	215	217	216	207	127	182	1380
Total	713	4557	4375	4242	4088	4097	4066	4026	3981	4015	3879		636	559	625	601	625	367	371	3784

N = Nursery
S = Special Unit
AN = Admission Number (for 2014/15 academic year)
SC = School Census



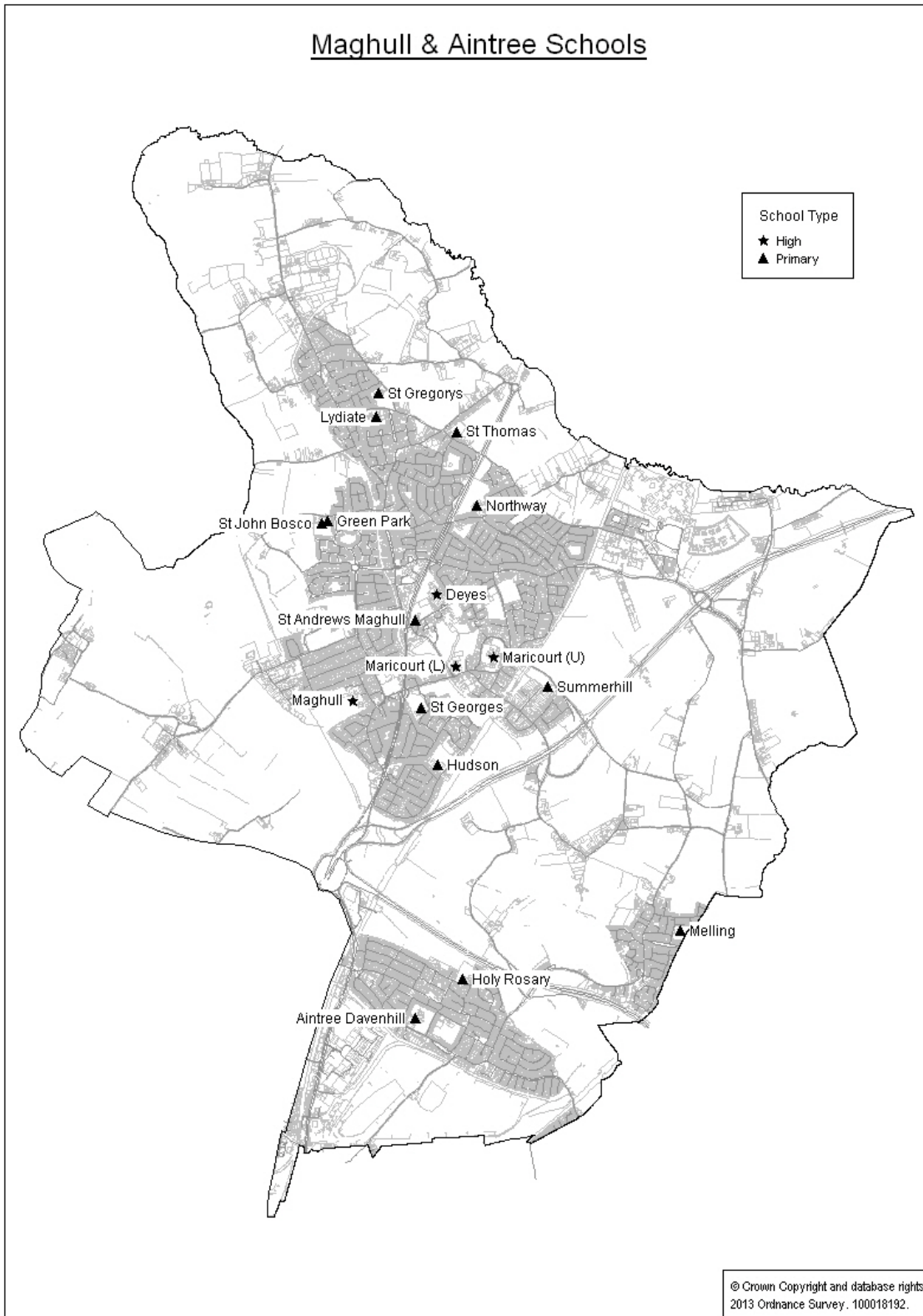
Numbers on Roll 2005 to 2014

School	January School Census												SC NOR October 2014 – Year Groups								
	N/S	AN	2005	2006	2007	2008	2009	2010	2011	2012	2013	2014	R	Y1	Y2	Y3	Y4	Y5	Y6	Total	
Formby																					
Freshfield Community Primary	NS	30	220	205	198	212	211	225	215	213	223	224	30	29	31	31	34	33	31	219	
Redgate Community Primary		30	149	153	139	140	146	160	156	152	163	144	20	14	18	29	21	22	27	151	
Woodlands Community Primary		45	404	393	385	364	336	318	314	306	313	314	45	41	42	44	45	48	49	314	
Holy Trinity CE Primary			63	0	0	0	0	0	0	0	0	0				Closed					
St Luke's CE Primary		60	381	395	405	415	425	427	426	423	411	416	56	59	50	60	65	65	61	416	
St Peter's CE Primary			199	0	0	0	0	0	0	0	0	0				Closed					
Trinity St Peter's CE Primary	N	30		225	214	195	203	198	197	193	205	212	30	30	30	30	30	32	30	212	
Our Lady of Compassion Catholic	N	30	266	262	256	247	246	228	234	230	231	227	23	30	30	48	31	31	32	225	
St Jerome's Catholic Primary		30	212	210	204	207	213	213	215	216	216	214	30	30	26	32	31	31	32	212	
Total			255	1894	1843	1801	1780	1780	1769	1757	1733	1762	1751	234	233	227	274	257	262	262	1749

Page 82

School	January School Census											SC NOR October 2014– Year Groups								
	AN	2005	2006	2007	2008	2009	2010	2011	2012	2013	2014	Y7	Y8	Y9	Y10	Y11	Y12	Y13	Total	
Formby																				
Formby High	160	883	907	969	1017	1014	984	971	988	1002	1032	162	160	161	156	162	110	118	1029	
Range High	196	1233	1224	1261	1293	1282	1261	1209	1174	1114	1117	195	188	148	195	200	121	93	1140	
Total	356	2116	2131	2230	2310	2296	2245	2180	2162	2116	2149	357	348	309	351	362	231	211	2169	

N = Nursery
S = Special Unit
AN = Admission Number (for 2014/15 academic year)
SC = School Census



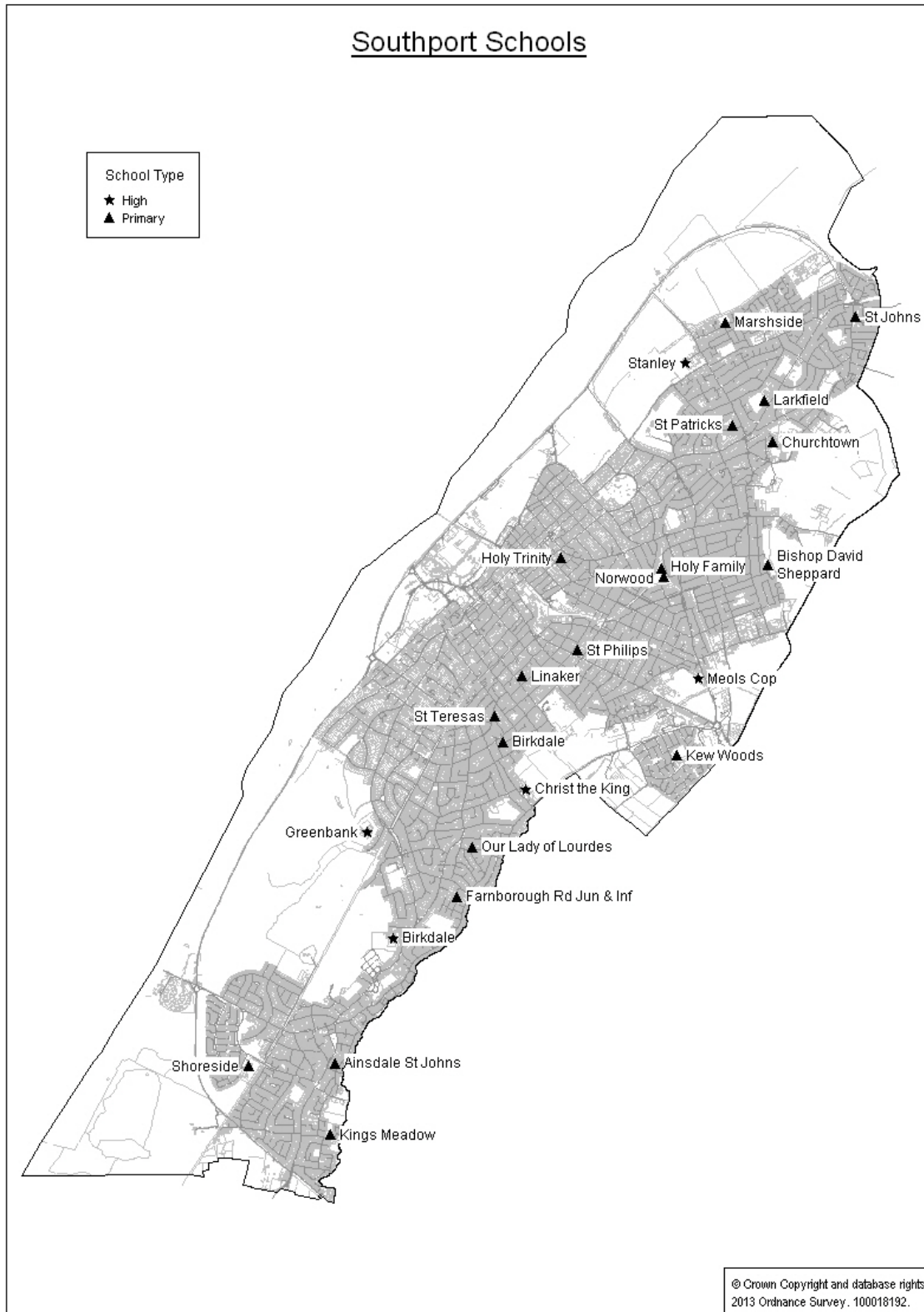
Numbers on Roll 2005 to 2014

School	January School Census												SC NOR October 2014 – Year Groups							
	N/S	AN	2005	2006	2007	2008	2009	2010	2011	2012	2013	2014	R	Y1	Y2	Y3	Y4	Y5	Y6	Total
Maghull / Aintree																				
Aintree Davenhill Community Primary	N	60	434	419	416	403	404	414	407	411	417	403	60	59	56	57	60	56	57	405
Green Park Community Primary	N	30	201	208	210	211	205	199	195	198	201	200	30	30	29	27	28	26	23	193
Hudson Community Primary	N	30	180	172	142	117	102	111	108	122	132	127	17	15	15	27	13	15	13	115
Lydiate Community Primary	N	45	288	286	278	272	284	275	278	287	290	301	32	38	39	45	41	45	42	282
Melling Community Primary		30	198	193	195	205	211	205	204	200	205	207	29	31	30	31	28	31	31	211
Northway Community Primary	NS	45	290	293	291	283	279	260	255	246	246	261	45	40	36	27	42	46	40	276
Summerhill Community Primary		30	205	210	208	205	204	199	198	196	195	199	31	26	30	27	27	25	29	195
Woodend/Maghull Primary			0	0	0	0	0	0	0	0	0	0	Closed							
St Andrew's CE Primary		60	413	377	374	356	361	355	360	360	368	348	34	38	57	46	50	57	57	339
Thomas' CE Primary		30	177	177	169	170	169	182	173	181	192	200	30	30	31	29	30	27	31	208
St Mary's Rosary Catholic Primary	N	60	339	342	353	370	385	397	411	413	415	418	58	60	60	61	60	59	55	413
St George's Catholic Primary	N	30	237	237	205	191	175	167	164	164	165	167	22	29	30	21	30	23	19	174
St Gregory's Catholic Primary	N	30	170	159	178	179	164	166	173	176	184	180	30	29	29	25	30	31	20	194
St John Bosco Catholic Primary		30	190	190	196	196	199	202	200	200	201	205	28	29	30	26	29	28	30	200
Total		510	3322	3263	3215	3158	3142	3132	3126	3154	3211	3216	446	454	472	449	468	469	447	3205

Page 84

School	January School Census											SC NOR October 2014 - Year Groups								
	AN	2005	2006	2007	2008	2009	2010	2011	2012	2013	2014	Y7	Y8	Y9	Y10	Y11	Y12	Y13	Total	
Maghull / Aintree																				
Deyes High	230	1439	1450	1428	1424	1433	1453	1417	1389	1391	1338	229	229	227	213	229	109	92	1328	
Maghull High	220	1280	1259	1265	1292	1284	1282	1259	1223	1161	1135	179	141	159	169	199	135	107	1089	
Maricourt Catholic High	253	1465	1465	1478	1481	1493	1474	1483	1477	1506	1432	224	212	251	237	246	128	98	1396	
Total	703	4184	4174	4171	4197	4210	4209	4159	4089	4058	3905	632	582	637	619	674	372	297	3813	

N = Nursery
S = Special Unit
AN = Admission Number (for 2014/15 academic year)
SC = School Census



Numbers on Roll 2005 to 2014

School	January School Census												SC NOR October 2014 – Year Groups								
	N/S	AN	2005	2006	2007	2008	2009	2010	2011	2012	2013	2014	R	Y1	Y2	Y3	Y4	Y5	Y6	Total	
Southport																					
Birkdale Community Primary	N	60	301	301	306	310	304	310	317	322	315	333	59	56	44	47	50	44	46	346	
Churchtown Community Primary	N	120	770	795	822	820	819	817	809	825	828	819	119	120	114	120	116	116	120	825	
Farnborough Road Junior		120	578	584	569	553	519	490	475	472	462	461				119	122	110	118	469	
Farnborough Road Infant	N	120	404	356	348	346	358	351	345	345	359	352	121	115	120					356	
Kew Woods Community Primary	N	60	310	306	306	307	309	315	316	336	347	369	57	56	60	60	48	45	48	374	
Kings Meadow Community Primary	NS	30	132	139	142	138	134	130	135	148	159	161	31	22	29	26	26	20	23	177	
Larkfield Community Primary		45	297	292	278	270	258	268	279	291	287	313	43	45	43	45	45	45	44	310	
Linaker Community Primary	N	75	460	428	412	389	402	403	411	413	411	414	76	64	59	60	59	59	60	437	
Marshside Community Primary		30	212	204	204	202	193	194	190	191	179	173	28	25	16	26	27	12	27	161	
Merewood Community Primary		60	420	416	416	410	410	409	412	419	420	418	64	61	60	60	60	59	59	423	
Mosseside Community Primary		30	292	288	268	267	256	222	225	215	214	211	24	26	31	29	30	31	35	206	
Northdale CE Primary		30	205	207	196	212	211	209	204	207	213	214	29	29	30	30	32	28	30	208	
Orchard David Sheppard CE	N	30	206	187	163	141	124	109	129	153	159	172	30	30	30	28	29	17	22	186	
Holy Trinity CE Primary		30	193	190	188	200	203	206	207	208	208	209	30	31	31	31	30	32	30	215	
St John's CE Primary		30	211	206	204	206	209	197	191	179	173	158	26	23	22	25	19	19	29	163	
St Philip's CE Primary		30	208	211	209	209	208	210	211	214	212	214	30	30	30	30	30	31	30	211	
Holy Family Catholic Primary		30	260	239	233	218	212	221	220	219	210	202	30	31	30	31	24	30	31	207	
Our Lady of Lourdes Catholic*	NS	60	469	458	474	507	498	502	529	529	546	533	64	53	59	86	94	85	91	532	
St John Stone Catholic Primary			125	109	96	0	0	0	0	0	0	0				Closed					
St Patrick's Catholic Primary		50	275	270	285	289	297	294	316	318	326	333	53	51	46	49	50	42	49	340	
St Teresa's Catholic Infant	N	30	82	83	86	87	87	89	88	89	89	87	30	28	28					86	
Total			920	6410	6269	6205	6081	6011	5946	6009	6093	6117	6146	944	896	882	902	891	825	892	6232

*Our Lady of Lourdes has an additional intake of 30 pupils at age 7.

N = Nursery
S = Special Unit
AN = Admission Number (for 2014/15 academic year)
SC = School Census

Numbers on Roll 2005 to 2014

School	January School Census											SC NOR October 2014 – Year Groups							
	AN	2005	2006	2007	2008	2009	2010	2011	2012	2013	2014	Y7	Y8	Y9	Y10	Y11	Y12	Y13	Total
Southport																			
Ainsdale High		419	0	0	0	0	0	0	0	0	0				Closed				
Birkdale High	192	888	904	908	914	918	926	909	895	837	769	113	124	140	167	160			704
Greenbank High	206	1001	994	976	926	892	860	845	875	880	860	196	184	165	188	168			901
Meols Cop High	150	572	551	559	600	676	704	713	706	723	729	159	155	151	140	138			743
Stanley High	150	886	880	866	855	840	820	810	755	737	723	151	162	145	114	155			727
Ainsdale Hope CE High			338	132	0	0	0	0	0	0	0				Closed				
Christ the King Catholic High	205	1153	1149	1174	1192	1200	1179	1188	1199	1177	1226	177	200	175	209	204	183	114	1262
Total	903	4919	4816	4615	4487	4526	4489	4466	4430	4354	4307	796	825	776	818	825	183	114	4337

AN = Admission Number (for 2014/15 academic year)

SC = School Census

Annexes

ANNEX 1

PUPIL NUMBERS AND SCHOOL PLACES

Explanatory Note

Annex 1 provides details of pupil numbers and school places in Sefton and the different areas of the Borough. This information is provided for the primary, secondary, nursery and special sectors.

Unless stated otherwise, all pupil numbers are as at January in the relevant year. Actual pupil numbers do not include pupils educated in LEA designated special needs classes in mainstream schools. The pupil projections are the figures supplied to the Education Funding Agency as part of the School Capacity Collection 2014.

In the primary sector, the number of places is determined by multiplying each school's admission number by the number of year groups in the school unless a different admission number applies to a particular year group which is taken into account in the calculations.

In the secondary sector, the number of places is also determined from the admission number but takes account of the number of students in the school's sixth form where relevant.

The Net Capacity is a measure of the number of workplaces available based upon teaching accommodation.

SCHOOL PLACES IN SEFTON

A. Primary

1. Numbers and Types of Schools, January 2014

School Type	Community	CE		Catholic Aided
		Controlled	Aided	
Primary	30	6	10	24
Infant	2	-	-	1
Junior	2	-	-	0
Total	34	6	10	25

2. Number of School Places, January 2014

School Type	Community	CE		Catholic Aided
		Controlled	Aided	
Primary	9,449	1,950	2,100	7,330
Infant	630	-	-	90
Junior	840	-	-	0
Total	10,919	1,950	2,100	7,420

Grand Total	22,389
-------------	--------

3. Demand and Supply of Primary School Places 2013/14 to 2018/19

Year	Demand		Number of Places	Net Capacity
	Actual	Projected		
2013/14	19,903		22,389	21,767
2014/15		20,046		
2015/16		20,241		
2016/17		20,429		
2017/18		20,499		
2018/19		20,548		

4. Demand and Supply of Reception Places 2013/14 to 2018/19

Year	Demand		Number of Places
	Actual	Projected	
2013/14	2,910		3,152
2014/15		2,913	
2015/16		2,983	
2016/17		2,955	
2017/18		2,932	
2018/19		2,932	

SCHOOL PLACES IN SEFTON

B. Secondary

1. Numbers and Types of Schools, January 2014

School Type	Community	CE		Catholic Aided
		Controlled	Aided	
Secondary 11-16	6	-	0	2
Secondary 11-18*	5	-	1	4
Sixth Form College	1	-	-	-
Total	12	-	1	6

*Seven of these schools are now academies

2. Number of School Places, January 2014

School Type	Community	CE		Catholic Aided
		Controlled	Aided	
Secondary 11-16	5,699	-	0	600
Secondary 11-18	6,319	-	756	5,766
Free School	600	-	-	-
Sixth Form College	680	-	-	-
Total	13,298	-	756	6,366

Grand Total	20,420
--------------------	---------------

3. Demand and Supply of Secondary School Places 2013/14 to 2018/19

Year	Demand		Number of Places	Net Capacity
	Actual	Projected*		
2013/14	17,895		20,420	20,546
2014/15		17,679		
2015/16		17,411		
2016/17		17,242		
2017/18		17,353		
2018/19		17,484		

*September forecasts

4. Demand and Supply of Year 7 Places 2013/14 to 2018/19

Year	Demand		Total Number of Places
	Actual	Projected*	
2013/14	2,859		3,548
2014/15		3,017	
2015/16		3,047	
2016/17		2,974	
2017/18		3,112	
2018/19		3,097	

*September forecasts

SCHOOL PLACES IN BOOTLE

A. Primary

1. Numbers and Types of Schools, January 2014

2.

School Type	Community	CE		Catholic Aided
		Controlled	Aided	
Primary	6	1	1	6
Infant	0	-	-	0
Junior	0	-	-	0
Total	6	1	1	6

3. Number of School Places, January 2014

4.

School Type	Community	CE		Catholic Aided
		Controlled	Aided	
Primary	1,830	375	210	1,830
Infant		-	-	
Junior		-	-	
Total	1,830	375	210	1,830

Grand Total	4,245
-------------	-------

5. Demand and Supply of Primary School Places 2013/14 to 2018/19

Year	Demand		Number of Places	Net Capacity
	Actual	Projected		
2013/14	3,362		4,245	3,944
2014/15		3,399		
2015/16		3,507		
2016/17		3,625		
2017/18		3,703		
2018/19		3,780		

6. Demand and Supply of Reception Places 2013/14 to 2018/19

Year	Demand		Number of Places
	Actual	Projected	
2013/14	538		555
2014/15		509	
2015/16		558	
2016/17		558	
2017/18		558	
2018/19		558	

SCHOOL PLACES IN BOOTLE

B. Secondary

1. Numbers and Types of Schools, January 2014

School Type	Community	CE		Catholic Aided
		Controlled	Aided	
Secondary 11-16	1	-	-	1
Secondary 11-18	0	-	-	1
Free School	1			0
Total	2	-	-	2

2. Number of School Places, January 2014

School Type	Community	CE		Catholic Aided
		Controlled	Aided	
Secondary 11-16	962	-	-	1,404
Secondary 11-18	-	-	-	0
Free School	600			
Total	1,562	-	-	1,404

Grand Total	2,966
-------------	-------

3. Demand and Supply of Secondary School Places 2013/14 to 2018/19

Year	Demand		Number of Places	Net Capacity
	Actual	Projected*		
2013/14	2,235		2,966	3,107
2014/15		2,131		
2015/16		2,051		
2016/17		1,986		
2017/18		1,996		
2018/19		2,025		

*September forecasts

4. Demand and Supply of Year 7 Places 2012/13 to 2017/18

Year	Actual	Demand		Total Number of Places
			Projected*	
2013/14	399			614
2014/15			406	
2015/16			382	
2016/17			376	
2017/18			436	
2018/19			425	

*September forecasts

SCHOOL PLACES IN LITHERLAND

A. Primary

1. Numbers and Types of Schools, January 2014

School Type	Community	CE		Catholic Aided
		Controlled	Aided	
Primary	3	1	-	4
Infant	-	-	-	-
Junior	-	-	-	-
Total	3	1	-	4

2. Number of School Places, January 2014

School Type	Community	CE		Catholic Aided
		Controlled	Aided	
Primary	870	210	-	1,260
Infant	-	-	-	-
Junior	-	-	-	-
Total	870	210	-	1,260

Grand Total	2,340
-------------	-------

3. Demand and Supply of Primary School Places 2013/14 to 2018/19

Year	Demand		Number of Places	Net Capacity
	Actual	Projected		
2013/14	1,762		2,340	2,187
2014/15		1,809		
2015/16		1,843		
2016/17		1,858		
2017/18		1,856		
2018/19		1,864		

4. Demand and Supply of Reception Places 2013/14 to 2018/19

Year	Demand		Number of Places
	Actual	Projected	
2013/14	267		330
2014/15		262	
2015/16		270	
2016/17		264	
2017/18		264	
2018/19		264	

SCHOOL PLACES IN LITHERLAND

B. Secondary

1. Numbers and Types of Schools, January 2014

School Type	Community	CE		Catholic Aided
		Controlled	Aided	
Secondary 11-16	1	-	-	-
Secondary 11-18	-	-	-	-
Sixth Form College	1	-	-	-
Total	2	-	-	-

2. Number of School Places, January 2014

School Type	Community	CE		Catholic Aided
		Controlled	Aided	
Secondary 11-16	1,200	-	-	-
Secondary 11-18	-	-	-	-
Sixth Form College	680	-	-	-
Total	1,880	-	-	-

Grand Total	1,880
-------------	-------

3. Demand and Supply of Secondary School Places 2013/14 to 2018/19

Year	Demand		Number of Places	Net Capacity
	Actual	Projected*		
2013/14	1,420		1,880	1,798
2014/15		1,447		
2015/16		1,418		
2016/17		1,403		
2017/18		1,400		
2018/19		1,396		

*September forecasts

4. Demand and Supply of Year 7 Places 2013/14 to 2018/19

Year	Demand		Total Number of Places
	Actual	Projected*	
2013/14	154		240
2014/15		170	
2015/16		202	
2016/17		189	
2017/18		187	
2018/19		181	

*September forecasts

SCHOOL PLACES IN CROSBY

A. Primary

1. Numbers and Types of Schools, January 2014

School Type	Community	CE		Catholic Aided
		Controlled	Aided	
Primary	2	1	3	5
Infant	1	-	-	-
Junior	1	-	-	-
Total	4	1	3	5

2. Number of School Places, January 2014

School Type	Community	CE		Catholic Aided
		Controlled	Aided	
Primary	720	315	630	1,680
Infant	270	-	-	-
Junior	360	-	-	-
Total	1,350	315	630	1,680

Grand Total	3,975
-------------	-------

3. Demand and Supply of Primary School Places 2013/14 to 2018/19

Year	Demand		Number of Places	Net Capacity
	Actual	Projected		
2013/14	3,714		3,975	3,853
2014/15		3,742		
2015/16		3,753		
2016/17		3,757		
2017/18		3,750		
2018/19		3,730		

4. Demand and Supply of Reception Places 2013/14 to 2018/19

Year	Demand		Number of Places
	Actual	Projected	
2013/14	534		555
2014/15		548	
2015/16		529	
2016/17		527	
2017/18		527	
2018/19		527	

SCHOOL PLACES IN CROSBY

B. Secondary

1. Numbers and Types of Schools, January 2014

School Type	Community	CE		Catholic Aided
		Controlled	Aided	
Secondary 11-16	-	-	-	-
Secondary 11-18*	1	-	1	2
Total	1	-	1	2

*One of these schools is now an academy

2. Number of School Places, January 2014

School Type	Community	CE		Catholic Aided
		Controlled	Aided	
Secondary 11-16	-	-	-	-
Secondary 11-18	1,326	-	756	2,264
Total	1,326	-	756	2,264

Grand Total	4,347
-------------	-------

3. Demand and Supply of Secondary School Places 2013/14 to 2018/19

Year	Demand		Number of Places	Net Capacity
	Actual	Projected*		
2013/14	3,879		4,347	4,413
2014/15		3,877		
2015/16		3,849		
2016/17		3,857		
2017/18		3,927		
2018/19		4,028		

*September forecasts

4. Demand and Supply of Year 7 Places 2013/14 to 2018/19

Year	Demand		Total Number of Places
	Actual	Projected*	
2013/14	568		713
2014/15		688	
2015/16		686	
2016/17		659	
2017/18		688	
2018/19		706	

*September forecasts

SCHOOL PLACES IN FORMBY

A. Primary

1. Numbers and Types of Schools, January 2014

School Type	Community	CE		Catholic Aided
		Controlled	Aided	
Primary	3	1	1	2
Infant	-	-	-	-
Junior	-	-	-	-
Total	3	1	1	2

2. Number of School Places, January 2014

School Type	Community	CE		Catholic Aided
		Controlled	Aided	
Primary	795	420	210	420
Infant	-	-	-	-
Junior	-	-	-	-
Total	795	420	210	420

Grand Total	1,845
-------------	-------

3. Demand and Supply of Primary School Places 2013/14 to 2018/19

Year	Demand		Number of Places	Net Capacity
	Actual	Projected		
2013/14	1,740		1,845	1,785
2014/15		1,722		
2015/16		1,697		
2016/17		1,665		
2017/18		1,621		
2018/19		1,553		

4. Demand and Supply of Reception Places 2013/14 to 2018/19

Year	Demand		Number of Places
	Actual	Projected	
2013/14	237		255
2014/15		234	
2015/16		232	
2016/17		223	
2017/18		200	
2018/19		200	

SCHOOL PLACES IN FORMBY

B. Secondary

1. Numbers and Types of Schools, January 2014

School Type	Community	CE		Catholic Aided
		Controlled	Aided	
Secondary 11-16	-	-	-	-
Secondary 11-18*	2	-	-	-
Total	2	-	-	-

*These schools are now academies

2. Number of School Places, January 2014

School Type	Community	CE		Catholic Aided
		Controlled	Aided	
Secondary 11-16	-	-	-	-
Secondary 11-18	2,218	-	-	-
Total	2,218	-	-	-

Grand Total	2,218
-------------	-------

3. Demand and Supply of Secondary School Places 2013/14 to 2018/19

Year	Demand		Number of Places	Net Capacity
	Actual	Projected*		
2013/14	2,149		2,218	2,218
2014/15		2,095		
2015/16		2,051		
2016/17		2,013		
2017/18		1,989		
2018/19		1,976		

*September forecasts

4. Demand and Supply of Year 7 Places 2013/14 to 2018/19

Year	Demand		Total Number of Places
	Actual	Projected*	
2013/14	341		356
2014/15		317	
2015/16		322	
2016/17		321	
2017/18		307	
2018/19		333	

*September forecasts

SCHOOL PLACES IN MAGHULL & AINTREE

A. Primary

1. Numbers and Types of Schools, January 2014

School Type	Community	CE		Catholic Aided
		Controlled	Aided	
Primary	7	1	1	4
Infant	-	-	-	-
Junior	-	-	-	-
Total	7	1	1	4

2. Number of School Places, January 2014

School Type	Community	CE		Catholic Aided
		Controlled	Aided	
Primary	1,925	420	210	1,040
Infant	-	-	-	-
Junior	-	-	-	-
Total	1,925	420	210	1,040

Grand Total	3,595
-------------	-------

3. Demand and Supply of Primary School Places 2013/14 to 2018/19

Year	Demand		Number of Places	Net Capacity
	Actual	Projected		
2013/14	3,206		3,595	3,528
2014/15		3,194		
2015/16		3,192		
2016/17		3,184		
2017/18		3,177		
2018/19		3,193		

4. Demand and Supply of Reception Places 2013/14 to 2018/19

Year	Demand		Number of Places
	Actual	Projected	
2013/14	446		515
2014/15		439	
2015/16		450	
2016/17		464	
2017/18		464	
2018/19		464	

SCHOOL PLACES IN MAGHULL & AINTREE

B. Secondary

1. Numbers and Types of Schools, January 2014

School Type	Community	CE		Catholic Aided
		Controlled	Aided	
Secondary 11-16	-	-	-	-
Secondary 11-18*	2	-	-	1
Total	2	-	-	1

*Two of these schools are now academies

2. Number of School Places, January 2014

School Type	Community	CE		Catholic Aided
		Controlled	Aided	
Secondary 11-16	-	-	-	-
Secondary 11-18	2,775	-	-	1,523
Total	2,775	-	-	1,528

Grand Total	4,298
-------------	-------

3. Demand and Supply of Secondary School Places 2013/14 to 2018/19

Year	Demand		Number of Places	Net Capacity
	Actual	Projected*		
2013/14	3,905		4,298	4,303
2014/15		3,867		
2015/16		3,824		
2016/17		3,817		
2017/18		3,820		
2018/19		3,832		

*September forecasts

4. Demand and Supply of Year 7 Places 2013/14 to 2018/19

Year	Demand		Total Number of Places
	Actual	Projected*	
2013/14	577		703
2014/15		636	
2015/16		634	
2016/17		665	
2017/18		667	
2018/19		629	

*September forecasts

SCHOOL PLACES IN SOUTHPORT

A. Primary

1. Numbers and Types of Schools, January 2014

School Type	Community	CE		Catholic Aided
		Controlled	Aided	
Primary	9	1	4	3
Infant	1	-	-	1
Junior	1	-	-	-
Total	11	1	4	4

2. Number of School Places, January 2014

School Type	Community	CE		Catholic Aided
		Controlled	Aided	
Primary	3,309	210	840	1,100
Infant	360	-	-	90
Junior	480	-	-	-
Total	4,149	210	840	1,190

Grand Total	6,389
-------------	-------

3. Demand and Supply of Primary School Places 2013/14 to 2018/19

Year	Demand		Number of Places	Net Capacity
	Actual	Projected		
2013/14	6,119		6,389	6,470
2014/15		6,180		
2015/16		6,249		
2016/17		6,340		
2017/18		6,392		
2018/19		6,428		

4. Demand and Supply of Reception Places 2013/14 to 2018/19

Year	Demand		Number of Places
	Actual	Projected	
2013/14	888		942
2014/15		921	
2015/16		944	
2016/17		919	
2017/18		919	
2018/19		919	

SCHOOL PLACES IN SOUTHPORT

B. Secondary

1. Numbers and Types of Schools, January 2014

School Type	Community	CE		Catholic Aided
		Controlled	Aided	
Secondary 11-16*	4	-	-	-
Secondary 11-18	-	-	-	1
Total	4	-	-	1

*Two of these schools are academies

2. Number of School Places, January 2014

School Type	Community	CE		Catholic Aided
		Controlled	Aided	
Secondary 11-16	3,537	-	-	-
Secondary 11-18	-	-	-	1,175
Total	3,537	-	-	1,175

Grand Total	4,712
--------------------	--------------

3. Demand and Supply of Secondary School Places 2012/13 to 2017/18

Year	Demand		Number of Places	Net Capacity
	Actual	Projected*		
2013/14	4,307		4,712	4,707
2014/15		4,262		
2015/16		4,217		
2016/17		4,166		
2017/18		4,221		
2018/19		4,227		

*September forecasts

4. Demand and Supply of Year 7 Places 2012/13 to 2017/18

Year	Demand		Total Number of Places
	Actual	Projected*	
2013/14	820		922
2014/15		800	
2015/16		821	
2016/17		764	
2017/18		827	
2018/19		823	

*September forecasts

NURSERY PLACES IN SEFTON LEA Maintained

Area	Nursery Schools		Nursery Classes	
	No of Schools	Part Time Places	No of Classes	Part Time Places
Bootle	2	160	13	802*
Litherland	-	-	7	430*
Crosby	1	80	6	344
Formby	-	-	3	172
Maghull & Aintree	-	-	8	458*
Southport	1	80	9	642*
SEFTON	4	320	46	2,848

*Six primary schools now have additional places for two year olds which are included above.

POST 16 PROVISION

Area	Sector	Number of Schools	Number on Roll	
			January 2014	September 2014
Bootle/Litherland	Community	0	-	-
	Catholic Aided	0	-	-
	Community (6 th Form College)	1	584	584
Crosby	Community (Academy)	1	162	181
	Catholic Aided	2	508	493
	CE Aided	1	99	64
Formby	Community (Academy)	2	426	442
	Catholic Aided	0	-	-
Maghull & Aintree	Community (Academy)	2	439	443
	Catholic Aided	1	241	226
Southport	Community	0	-	-
	Catholic Aided	1	235	297
SEFTON	Community	6	1611	1650
	Catholic Aided	4	984	1016
	CE Aided	1	99	64

SPECIAL EDUCATIONAL NEEDS PLACES IN SEFTON

1. Special Schools in Sefton

School	Type of Special Needs Catered For	Number of Pupils*	Number of Places	Empty Places
Crosby High	Moderate learning difficulties	144	146	2
Merefield	Severe learning difficulties & autism	78	80	2
Newfield	Emotional & behavioural difficulties	80	81	1
Presfield	Moderate learning difficulties	77	72	0
Rowan Park	Severe learning difficulties & autism	134	132	0

*September 2014

School	Type of Special Needs Catered For	Age Range	Number of Places
Crosby High	Moderate learning difficulties	11-16	146
Merefield	Severe learning difficulties & autism	3-19	80
Newfield	Emotional & behavioural difficulties	5-16	81
Presfield	ASD provision	11-19	72
Rowan Park	Severe learning difficulties & autism	3-19	132

2. Special Bases in Sefton

Primary School	Type of Base	Number of Pupils*	Number of Places	Empty Places
Freshfield	Moderate learning difficulties	10	10	0
Grange	Moderate learning difficulties	11	10	0
Grange	Moderate learning difficulties/ emotional & behavioural difficulties	8	10	2
Grange	Autism	20	16	0
Grange	Language Units	24	20	0
Hudson	ASD Provision	3	8	5
Kings Meadow	Language Unit (2)	7	10	3
Northway	SPLD Unit	7	12	5
Our Lady of Lourdes	Autism	23	20	0
Rimrose Hope CE	Moderate learning difficulties (more complex needs)	16	20	4
Waterloo	ASD Provision 3x8 Pupils	28	30	2

*September 2014

Secondary School	Type of Base	Number of Pupils*	Number of Places	Empty Places
Meols Cop	Specific Learning Difficulties Unit (dyslexia)	14	12	0
Meols Cop	Autism	10	8	2
St Michael's CE	Specific Learning Difficulties Unit (dyslexia)	30	30	0

*September 2014

ANNEX 2

CHANGES IN SCHOOL ORGANISATION

Details of Recent Changes in School Organisation

Explanatory Note

Annex 2 details recent changes in school organisation including the dates on which these changes were agreed.

Statutory Proposals in Sefton 1999 to 2014

Publication Date	School	Description	Decision	Decision Maker	Decision Date
18/10/99	Our Lady of Lourdes Catholic Primary School	Prescribed Alteration - addition of a nursery unit	Approved	SOC	22/12/99
18/05/00	The Grange Primary School	Prescribed Alteration - to add SEN unit	LEA determined to implement	LEA	16/08/00
18/05/00	Thornton Primary School	Prescribed Alteration - to add SEN unit	LEA determined to implement	LEA	16/08/00
18/05/00	Waterloo Primary School	Prescribed Alteration - to add SEN unit	LEA determined to implement	LEA	16/08/00
19/05/00	Meols Cop High School	Prescribed Alteration - to add SEN unit	LEA determined to implement	LEA	16/08/00
07/12/00	St Elizabeth's Catholic Infant School	Closure of school - due to amalgamation	Approved	SOC	28/02/2001
07/12/00	St Elizabeth's Catholic Junior School	Closure of school - due to amalgamation	Approved	SOC	28/02/2001
07/12/00	St Elizabeth's Catholic Primary School	Establish new school - result of amalgamation	Approved	SOC	28/02/2001
24/05/01	Maghull Primary School	Closure of a school - cease to maintain	Approved	SOC	01/09/01
31/05/01	St Gregory's Catholic Primary School	Prescribed Alteration - addition of a nursery unit	Approved	SOC	01/09/01
11/01/02	Presfield School	Change age range & extend range of needs	Approved	SOC	10/04/02
11/01/02	Ronald House School	Change age range & extend range of needs	LEA determined to implement	LEA	08/05/02
11/01/02	Newfield School	Increase number of places	LEA determined to implement	LEA	08/05/02
14/06/02	Our Lady of Lourdes Catholic Primary School	Prescribed Alteration - to add SEN unit	Approved	SOC	29/08/02
20/06/02	St Robert Bellarmine Catholic Primary School	Prescribed Alteration - addition of a nursery unit	Approved	SOC	29/08/02
27/09/02	Holy Trinity CE Primary School, Southport	Reduction of Standard Number	Approved	SOC	12/12/02
28/11/02	School of the Good Shepherd	Closure of a school - cease to maintain	Approved	SOC	18/03/03
15/05/03	Orrell Primary School	Closure of a school - cease to maintain	LEA determined to implement	LEA	27/08/03

Statutory Proposals in Sefton 1999 to 2014 Continued

Publication Date	School	Description	Decision	Decision Maker	Decision Date
15/05/03	Roberts Primary School	Closure of a school - cease to maintain	LEA determined to implement	LEA	27/08/03
15/05/03	New school to replace Orrell/Roberts Primary Schools	Establish a new school to replace Orrell/Roberts	LEA determined to implement	LEA	27/08/03
05/02/04	Ainsdale High School	Proposal to discontinue school	Approved	SOC	21/04/04
05/02/04	Manor High School	Proposal to discontinue school	Approved	SOC	21/04/04
05/02/04	Ainsdale High School	Establish new Church of England VA school	Approved	SOC	21/04/04
05/02/04	Manor High School	Establish new Church of England VA school	Approved	SOC	21/04/04
06/05/04	Thomas Gray Infant School	Proposal to discontinue school due to amalgamation	LEA determined to implement	LEA	30/06/04
06/05/04	Thomas Gray Junior School	Proposal to discontinue school due to amalgamation	LEA determined to implement	LEA	30/06/04
06/05/04	Thomas Gray Primary School	Proposal to establish new primary school – result of amalgamation	LEA determined to implement	LEA	30/06/04
09/09/04	Holy Rosary Catholic Primary School	Proposal to establish a nursery class	Approved	SOC	24/11/04
09/12/04	Daleacre Primary School	Proposal to discontinue the school	Approved	SOC	02/03/05
09/12/04	Holy Trinity CE Primary School, Formby	Proposal to discontinue the school	Approved	SOC	02/03/05
09/12/04	Netherton Park Primary School	Proposal to discontinue the school	Approved	SOC	02/03/05
09/12/04	Rawson Road Primary School	Proposal to discontinue the school	Approved	Schools Adjudicator	16/05/05
09/12/04	St Benet's Catholic Primary School	Proposal to discontinue the school	Approved	SOC	02/03/05
09/12/04	St Benet's Catholic Primary School	Proposal to establish a new Catholic primary school	Approved	SOC	02/03/05
09/12/04	St Benet's Catholic Primary School	Proposal to discontinue the school and establish a new Catholic primary school	Confirmation of implementation date	SOC	22/04/05
09/12/04	St Mary's CE Primary School	Proposal to discontinue the school	Approved	Schools Adjudicator	16/05/05

Statutory Proposals in Sefton 1999 to 2014 Continued

Publication Date	School	Description	Decision	Decision Maker	Decision Date
09/12/04	St Peter's CE Primary School	Proposal to discontinue the school	Approved	SOC	02/03/05
09/12/04	St Peter's CE Primary School	Proposal to establish a new CE primary school	Approved	SOC	02/03/05
09/12/04	St Raymond's Catholic Primary School	Proposal to discontinue the school	Approved	SOC	02/03/05
09/12/04	St Raymond's Catholic Primary School	Proposal to discontinue the school	Confirmation of implementation date	SOC	22/04/05
09/12/04	St Winefride and St Richard's Catholic Primary School	Proposal to discontinue the school	Approved	Schools Adjudicator	16/05/05
10/02/05	St Edmund's and St Thomas Catholic Primary School	Proposal to establish a Nursery class	Approved	SOC	22/04/05
12/05/05	Merefield School	Prescribed Alteration – increase in pupil numbers	Approved	LEA	27/07/05
26/05/05	Presfield School	Prescribed Alteration – change in age range	Approved	LEA	10/08/05
07/07/05	Trinity St Peter's CE Primary School	Proposal to establish a nursery class	Approved	Schools Adjudicator	25/11/05
24/03/06	Ainsdale Hope CE High School	Proposal to discontinue the school	Approved	SOC	5/06/06
27/04/06	St James' Catholic Primary School	Proposal to discontinue the school	Approved	SOC	6/07/06
27/04/06	St Joan of Arc Catholic Primary School	Proposal to discontinue the school	Approved	SOC	6/07/06
27/04/06	Replacement School for St James/ St Joan of Arc Catholic Primary Schools	Proposal to establish a new Catholic Primary School	Approved	SOC	6/07/06
27/04/06	Our Lady of Walsingham Catholic Infant School	Proposal to discontinue the school due to amalgamation	Approved	SOC	6/07/06
27/04/06	Our Lady of Walsingham Catholic Junior School	Proposal to discontinue the school due to amalgamation	Approved	SOC	6/07/06
27/04/06	Our Lady of Walsingham Catholic Primary School	Proposal to establish a new Catholic Primary School – result of amalgamation	Approved	SOC	6/07/06
27/04/06	Forefield Infant School	Proposal to establish a nursery class	LEA determined to implement	LEA	12/07/06

Statutory Proposals in Sefton 1999 to 2014 Continued

Publication Date	School	Description	Decision	Decision Maker	Decision Date
22/06/06	Beach Road Community Primary School	Proposal to discontinue the school	Approved	SOC	4/09/06
22/06/06	William Gladstone CE Primary School	Proposal to discontinue the school	Approved	SOC	4/09/06
22/06/06	Replacement school for Beach Road and William Gladstone Primary Schools	Proposal to establish a new CE Primary School	Approved	SOC	4/09/06
08/03/07	Bootle High School	Proposal to discontinue the school	Approved	SOC	15/05/07
08/03/07	Litherland High School	Prescribed alteration - an increase in the admission number and an enlargement of the premises	Approved	SOC	15/05/07
08/03/07	South Sefton 16 to 19 Centre	Proposal to establish a new community secondary school for pupils between the ages of 16 and 19	LEA determined to implement	LEA	15/05/07
21/09/07	St John Stone Catholic Primary School	Proposal to discontinue the school	LEA determined to implement	LEA	13/12/07
30/04/09	Thornton Community Primary School	Proposal to discontinue the school	LEA determined to implement	LEA	23/06/09
30/04/09	Rimrose Hope CE Primary School	Prescribed alteration – change in designation of resourced provision from MLD to MLD with additional more complex needs	LEA determined to implement	LEA	23/06/09
30/04/09	Waterloo Community Primary School	Prescribed alteration – change in designation of resourced provision from MLD to ASD	LEA determined to implement	LEA	23/06/09
30/04/09	Presfield Community Special School	Prescribed alteration – change the designation of the school from MLD to ASD	LEA determined to implement	LEA	23/06/09
15/04/10	St George of England Community High School	Proposal to discontinue the school	LEA determined to implement	LEA	13/07/10
03/02/11	St Wilfrid’s Catholic High School	Proposal to discontinue the school	LEA determined to implement	LEA	19/04/11
18/04/2013	Kings Meadow Community Primary School	Proposal to increase the admission number from 22 to 30	LEA determined to implement	LEA	19/06/13
06/11/13	Lander Road Community Primary School	Proposal to change the age range from 3 to 11 to 2 to 11	LEA determined to implement	LEA	16/01/14
06/11/13	Thomas Gray Community Primary School	Proposal to change the age range from 3 to 11 to 2 to 11	LEA determined to implement	LEA	16/01/14
06/11/13	Christ Church CE Primary School	Proposal to change the age range	LEA determined to implement	LEA	16/01/14

		from 3 to 11 to 2 to 11			
06/11/13	Hudson Community Primary School	Proposal to change the age range from 3 to 11 to 2 to 11	LEA determined to implement	LEA	16/01/14
06/11/13	St Elizabeth's Catholic Primary School	Proposal to change the age range from 3 to 11 to 2 to 11	LEA determined to implement	LEA	16/01/14
06/11/13	Bishop David Sheppard CE Primary School	Proposal to change the age range from 3 to 11 to 2 to 11	LEA determined to implement	LEA	16/01/14

SOC = School Organisation Committee

ANNEX 3

SCHOOL PLACES IN 2014

Empty Places and Surplus Places

Explanatory Note

Annex 3 provides details of the numbers of empty places and surplus places. This information is provided at Authority level and is summarised by sector and by area. In addition, this same level of detail is provided for individual schools. Surplus Places are taken from the DFE School Capacity Survey (SCAP - formerly Surplus Places Return). This return now uses May pupil numbers from the School Census return.

In the primary sector, the number of places is determined by multiplying each school's admission number by the number of year groups in the school. Where the number has changed in a particular year the original admission number still applies to the existing year groups until they have worked their way out of the school. The new number applies to all new pupils admitted after that date.

In the secondary sector, the number of places is also determined from the admission number but takes account of the number of students in the school's sixth form where relevant.

The Net Capacity is a measure of the number of places available based upon the teaching accommodation.

The number of empty places is the difference between the number of pupils on roll and the number of school places. This can also give an indication of potential overcrowding.

The measurement of surplus places is based upon the Net Capacity which is determined by the sizes of individual teaching areas. If a school's Net Capacity exceeds the number of pupils on roll, the numerical difference is the number of surplus places. No adjustment is made to figures to take account of those schools where the number of pupils on roll exceeds the Net Capacity. **For individual sectors and areas, therefore, the number of surplus places is not the actual difference between the number of pupils on roll and Net Capacity.**

SEFTON PUPIL NUMBERS AND PLACES, SUMMARY

Sector	NOR May 2014	Number of Places	Empty Places		Net Capacity	Surplus Places	
			No	%		No	%
PRIMARY							
Community	9,728	10,919	1,213	11.11	10,633	1,008	9.48
CE Controlled	1,718	1,950	232	11.90	1,878	160	8.52
CE Aided	2,006	2,100	94	4.48	2,033	70	3.44
Catholic Aided	6,606	7,420	814	10.97	7,223	676	9.36
TOTAL	20,058	22,389	2,353	10.51	21,767	1,914	8.79
SECONDARY							
Community	10,941	12,618	1,666	13.29	12,659	1,756	13.87
CE Controlled	-	-	-	-	-	-	-
CE Aided	539	756	217	28.73	864	325	37.62
Catholic Aided	5,739	6,366	627	9.85	6,425	768	11.95
6 th Form College	584	680	96	14.12	598	14	2.34
TOTAL	17,803	20,420	2,606	12.76	20,546	2,863	13.93
SECONDARY							
Co-educational	16,173	18,442	2,258	12.24	18,576	2,523	13.58
Boys	769	948	179	18.88	940	171	18.19
Girls	861	1,030	169	16.41	1,030	169	16.41
TOTAL	17,803	20,420	2,606	12.76	20,546	2,863	13.93

* For individual sectors and areas the number of surplus places is not the actual difference between the number of pupils on roll and Net Capacity as no adjustment is made to figures to take account of those schools where the number of pupils on roll exceeds the Net Capacity.

PRIMARY PUPIL NUMBERS AND PLACES, BY AREA

Area	NOR May 2014	Number of Places	Empty Places		Net Capacity	Surplus Places	
			No	%		No	%
Bootle							
Community	1,463	1,830	389	21.26	1,652	247	14.95
CE Controlled	301	375	74	19.73	315	14	4.44
CE Aided	200	210	10	4.76	210	10	4.76
Catholic Aided	1,450	1,830	380	20.77	1767	317	17.94
TOTAL	3,414	4,245	853	20.09	3,944	588	14.91
Litherland							
Community	641	870	229	26.32	840	199	23.69
CE Controlled	203	210	7	3.33	210	7	3.33
CE Aided	0	0	0	0.00	0	0	0.00
Catholic Aided	931	1,260	329	26.11	1,137	206	18.12
TOTAL	1,775	2,340	565	24.15	2,187	412	18.84
Crosby							
Community	1,216	1,350	134	9.93	1,257	44	3.50
CE Controlled	289	315	26	8.25	315	26	8.25
CE Aided	586	630	44	6.98	613	27	4.40
Catholic Aided	1,659	1,680	21	1.25	1,668	31	1.86
TOTAL	3,750	3,975	225	5.66	3,853	128	3.32
Formby							
Community	691	795	104	13.08	735	61	8.30
CE Controlled	419	420	1	0.24	420	1	0.24
CE Aided	211	210	-1	-0.48	210	0	0.00
Catholic Aided	441	420	-21	-5.00	420	0	0.00
TOTAL	1,762	1,845	83	4.50	1,785	62	3.47
Maghull/Aintree							
Community	1,692	1,925	233	12.10	1,894	202	10.67
CE Controlled	350	420	70	16.67	420	70	16.67
CE Aided	199	210	11	5.24	175	0	0.00
Catholic Aided	972	1,040	68	6.54	1,039	69	6.64
TOTAL	3,213	3,595	382	10.63	3,528	341	9.67
Southport							
Community	4,025	4,149	124	2.99	4,255	255	5.99
CE Controlled	156	210	54	25.71	198	42	21.21
CE Aided	810	840	30	3.57	825	33	4.00
Catholic Aided	1,153	1,190	37	3.11	1,192	53	4.45
TOTAL	6,144	6,389	245	3.83	6,470	383	5.92

*For individual sectors and areas the number of surplus places is not the actual difference between the number of pupils on roll and Net Capacity as no adjustment is made to figures to take account of those schools where the number of pupils on roll exceeds the Net Capacity.

SECONDARY PUPIL NUMBERS AND PLACES, BY AREA

Area	NOR May 2014	Number of Places	Empty Places		Net Capacity	Surplus Places	
			No	%		No	%
Bootle							
Community	1,266	1,562	296	18.95	1,608	342	21.27
CE	0	0	0	0	0	0	0
Catholic Aided	973	1,404	431	30.70	1,499	526	35.09
TOTAL	2,239	2,966	727	24.51	3,107	868	27.94
Litherland							
Community	822	1,200	378	31.50	1,200	378	31.50
CE	0	0	0	0	0	0	0
6 th Form College	584	680	96	14.12	598	14	2.34
Catholic Aided	0	0	0	0	0	0	0
TOTAL	1,406	1,880	474	25.21	1,798	392	21.80
Crosby							
Community	1,173	1,326	153	11.54	1,326	153	11.54
CE	539	756	217	28.73	864	325	37.62
Catholic Aided	2,122	2,264	142	6.28	2,223	138	6.21
TOTAL	3,834	4,347	513	11.79	4,413	532	12.06
Formby							
Community	2,143	2,218	75	3.37	2,218	113	5.09
CE	0	0	0	0	0	0	0
Catholic Aided	0	0	0	0	0	0	0
TOTAL	2,143	2,218	75	3.37	2,218	113	5.09
Maghull/Aintree							
Community	2,456	2,775	319	11.48	2,775	319	11.50
CE	0	0	0	0	0	0	0
Catholic Aided	1,424	1,523	99	6.50	1,528	104	6.81
TOTAL	3,880	4,298	418	9.72	4,303	423	9.83
Southport							
Community	3,081	3,537	445	12.58	3,532	451	12.77
CE	0	0	0	0	0	0	0
Catholic Aided	1,220	1,175	-45	-3.86	1,175	0	0.00
TOTAL	4,301	4,712	400	8.48	4,707	451	9.58

* For individual sectors and areas the number of surplus places is not the actual difference between the number of pupils on roll and Net Capacity as no adjustment is made to figures to take account of those schools where the number of pupils on roll exceeds the Net Capacity.

PRIMARY SCHOOLS: PUPIL NUMBERS AND PLACES

School	NOR May 2014	Number of Places	Empty Places		Net Capacity	Surplus Places	
			No	%		No	%
Bootle							
Bedford Primary	399	420	29	6.90	392	0	0.00
Grange Primary	261	210	-35	-16.67	210	0	0.00
Linacre Primary	169	210	39	18.57	210	41	19.52
Netherton Moss Primary	140	270	130	48.15	210	70	33.33
Springwell Park Primary	298	420	122	29.05	420	122	29.05
Thomas Gray Primary	196	300	104	34.67	210	14	6.67
Christ Church CE Primary	301	375	74	19.73	315	14	4.44
St Oswald's CE Primary	200	210	10	4.76	210	10	4.76
All Saints Catholic Primary	288	420	132	31.43	420	132	31.43
Holy Spirit Catholic Primary	169	210	41	19.52	210	41	19.52
Our Lady of Walsingham Catholic Primary	200	330	130	39.39	210	10	4.76
St Benedict's Catholic Primary	203	240	37	15.42	297	94	31.65
St Monica's Catholic Primary	380	420	40	9.52	420	40	9.52
St Robert Bellarmine Catholic Primary	210	210	0	0.00	210	0	0.00
Total	3,414	4,245	853	20.09	3,944	588	14.91

PRIMARY SCHOOLS: PUPIL NUMBERS AND PLACES

School	NOR May 2014	Number of Places	Empty Places		Net Capacity	Surplus Places	
			No	%		No	%
Litherland							
Hatton Hill Primary	308	420	112	26.67	420	112	26.67
Lander Road Primary	203	240	37	15.42	210	7	3.33
Litherland Moss Primary	130	210	80	38.10	210	80	38.10
St Philip's CE Primary	203	210	7	3.33	210	7	3.33
English Martyrs Catholic Primary	416	420	4	0.95	420	4	0.95
Our Lady Queen of Peace Catholic Primary	101	210	109	51.90	168	67	39.88
Our Lady Star of the Sea Catholic Primary	120	210	90	42.86	184	64	34.78
St Elizabeth's Catholic Primary	294	420	126	30.00	365	71	19.45
Total	1,775	2,340	565	24.15	2,187	412	18.84
Crosby							
Forefield Junior	357	360	3	0.83	360	3	0.83
Forefield Infant	270	270	0	0.00	267	0	0.00
Valewood Primary	209	210	1	0.48	210	1	0.48
Waterloo Primary	380	510	130	25.49	420	40	9.52
St John's CE Primary	172	210	38	18.10	193	21	10.88
St Luke's CE Halsall Primary	209	210	1	0.48	210	1	0.48
St Nicholas CE Primary	205	210	5	2.38	210	5	2.38
Rimrose Hope CE Primary	289	315	26	8.25	315	26	8.25
Great Crosby Catholic Primary	637	630	-7	-1.11	618	0	0.00
St Edmund's and St Thomas' Catholic Primary	318	315	-3	-0.95	315	0	0.00
St Mary's Catholic Primary	99	105	6	5.71	105	6	5.71
St William of York Catholic Primary	194	210	16	7.62	210	16	7.62
Ursuline Catholic Primary	411	420	9	2.14	420	9	2.14
Total	3,750	3,975	225	5.66	3,853	128	3.32

PRIMARY SCHOOLS: PUPIL NUMBERS AND PLACES

School	NOR May 2014	Number of Places	Empty Places		Net Capacity	Surplus Places	
			No	%		No	%
Formby							
Freshfield Primary	222	210	-12	-5.71	210	0	0.00
Redgate Primary	149	210	61	29.05	210	61	29.05
Woodlands Primary	320	375	55	14.67	315	0	0.00
St Luke's CE Primary	419	420	1	0.24	420	1	0.24
Trinity St Peter's CE Primary	211	210	-1	-0.48	210	0	0.00
Our Lady of Compassion Catholic Primary	228	210	-18	-8.57	210	0	0.00
St Jerome's Catholic Primary	213	210	-3	-1.43	210	0	0.00
Total	1,762	1,845	83	4.50	1,785	62	3.47
Maghull							
Aintree Davenhill Primary	405	420	15	3.57	420	15	3.57
Green Park Primary	195	210	15	7.14	208	13	6.25
Hudson Primary	120	210	90	42.86	180	60	33.33
Lydiate Primary	301	350	49	14.00	351	50	14.25
Melling Primary	209	210	1	0.48	210	1	0.48
Northway Primary	266	315	49	15.56	315	49	15.56
Summerhill Primary	196	210	14	6.67	210	14	6.67
St Andrew's CE Primary	350	420	70	16.67	420	70	16.67
St Thomas' CE Primary	199	210	11	5.24	175	0	0.00
Holy Rosary Catholic Primary	417	420	3	0.71	415	0	0.00
St George's Catholic Primary	168	210	42	20.00	210	42	20.00
St Gregory's Catholic Primary	183	210	27	12.86	210	27	12.86
St John Bosco Catholic Primary	204	200	-4	-2.00	204	0	0.00
Total	3,213	3,595	382	10.63	3,528	341	9.67

PRIMARY SCHOOLS: PUPIL NUMBERS AND PLACES

School	NOR May 2014	Number of Places	Empty Places		Net Capacity	Surplus Places	
			No	%		No	%
Southport							
Birkdale Primary	332	330	-2	-0.61	394	62	15.74
Churchtown Primary	823	840	17	2.02	840	17	2.02
Farnborough Road Junior	463	480	17	3.54	480	17	3.54
Farnborough Road Infant	355	360	5	1.39	348	0	0.00
Kew Woods Primary	367	360	-7	-1.94	399	32	8.02
Kings Meadow Primary	164	144	-20	-13.89	157	0	0.00
Larkfield Primary	309	330	21	6.36	311	2	0.64
Linaker Primary	412	435	23	5.29	493	81	16.43
Marshside Primary	166	210	44	20.95	210	44	20.95
Norwood Primary	421	420	-1	-0.24	413	0	0.00
Shoreside Primary	213	240	27	11.25	210	0	0.00
Ainsdale CE Primary	212	210	-2	-0.95	207	0	0.00
Bishop David Sheppard CE Primary	172	210	38	18.10	205	33	16.10
Holy Trinity CE Primary	213	210	-3	-1.43	210	0	0.00
St John's CE Primary	156	210	54	25.71	198	42	21.21
St Philip's CE Primary	213	210	-3	-1.43	203	0	0.00
Holy Family Catholic Primary	204	210	6	2.86	209	5	2.39
Our Lady of Lourdes Catholic Primary	529	540	11	2.04	515	0	0.00
St Patrick's Catholic Primary	337	350	13	3.71	378	41	10.85
St Teresa's Catholic Infant	83	90	7	7.78	90	7	7.78
Total	6,144	6,389	245	3.83	6,470	383	5.92

SECONDARY SCHOOLS: PUPIL NUMBERS AND PLACES

School	NOR May 2014	Number of Places	Empty Places		Net Capacity	Surplus Places	
			No	%		No	%
Bootle							
Hillside High	907	962	55	5.72	1008	101	10.02
The Hawthorne's Free School	359	600	241	40.17	600	241	40.17
St Ambrose Barlow Catholic College	389	600	211	35.17	600	211	35.17
Savio Salesian College	584	804	220	27.36	899	315	35.04
Total	2,239	2,966	727	24.51	3,107	868	27.94
Litherland							
Litherland High	822	1,200	378	31.50	1200	378	31.50
South Sefton 6 th Form College	584	680	96	14.12	598	14	2.34
Total	1,406	1,880	474	25.21	1,798	392	21.80
Crosby							
Chesterfield High	1,173	1,326	153	11.54	1,326	153	11.54
St Michael's CE High	539	756	217	28.73	864	325	37.62
Holy Family Catholic High	731	910	179	19.66	869	138	15.88
Sacred Heart Catholic High	1,391	1,354	-37	-2.71	1,354	0	0.00
Total	3,834	4,347	513	11.79	4,413	532	12.06

SECONDARY SCHOOLS: PUPIL NUMBERS AND PLACES

School	NOR May 2014	Number of Places	Empty Places		Net Capacity	Surplus Places	
			No	%		No	%
Formby							
Formby High	1,027	989	-38	-3.85	989	0	0.00
Range High	1,116	1,229	113	9.19	1,229	113	9.19
Total	2,143	2,218	75	3.37	2,218	113	5.09
Maghull							
Deyes High	1,334	1,426	92	6.45	1,426	92	6.45
Maghull High	1,122	1,349	227	16.80	1,349	227	16.83
Maricourt Catholic High	1,424	1,523	99	6.50	1,528	104	6.81
Total	3,880	4,298	418	9.72	4,303	423	9.83
Southport							
Birkdale High	769	948	179	11.28	940	171	18.19
Greenbank High	861	1,030	169	16.41	1,030	169	16.41
Meols Cop High	723	714	-20	-2.80	750	27	3.60
Stanley High	728	845	117	13.85	812	84	10.34
Christ the King Catholic High	1,220	1,175	-45	-3.86	1,175	0	0.00
Total	4,301	4,712	400	8.48	4,707	451	9.58

NURSERY PLACES IN NURSERY AND PRIMARY SCHOOLS

Nursery Class or School	Part-time Places	No of Part-time Pupils (Jan 2014)	No of Full-time Pupils (Jan 2014)	No of Empty Places (PT)
Bootle				
Christ Church CE Class	60+16 2yr old places	66		10
Grange Class	60	37		23
Holy Spirit Catholic Class	60	33		27
Linacre Class	60	29		31
Netherton Moss Class	60	36		24
Our Lady of Walsingham Catholic Class	60	37		23
Springwell Class	52	46		6
St Benedict's Catholic Class	60	26		34
All Saints Catholic Class	60	59		1
St Monica's Catholic Class	60	57		3
St Oswald's CE Class	60	40		20
St Robert Bellarmine Catholic Class	30	30		0
Thomas Gray Class	60+24 2yr old places	42		42
Cambridge School	80	80		0
Greenacre School	80	45		35
TOTAL	942	663	0	279
Litherland				
English Martyrs Catholic Class	60	54		6
Hatton Hill Class	60	52		8
Lander Road Class	60+16 2yr old places	69		7
Litherland Moss Class	60	33		27
Our Lady Queen of Peace Catholic Class	60	25		35
Our Lady Star of the Sea Catholic Class	30	19		11
St Elizabeth's Catholic Class	60+8 2yr old places	45		23
TOTAL	414	297	0	117

NURSERY PLACES IN NURSERY AND PRIMARY SCHOOLS

Nursery class or School	Part-time Places	No of Part-time Pupils (Jan 2014)	No of Full-time Pupils (Jan 2014)	No of Empty Places (PT)
Crosby				
Forefield Infant Class	52	52		0
Great Crosby Catholic Class	60	53		7
St Luke's CE Halsall Class	60	50		10
St Edmund's and St Thomas' Catholic	52	52		0
St William of York Catholic Class	60	43		17
Rimrose Hope CE Class	52	44		8
Sand Dunes School	80	36		44
TOTAL	416	330	0	86
Formby				
Freshfield Class	60	38		22
Trinity St Peter's CE Class	52	41		11
Our Lady of Compassion Catholic Class	60	23		37
TOTAL	172	102	0	70
Maghull & Aintree				
Aintree Davenhill Class	60	60		0
Green Park Class	60	45		15
Hudson Class	60+ 16 2yr old places	31		45
Lydiate Class	60	43		17
Northway Class	60	45		15
Holy Rosary Catholic Class	52	50		2
St George's Catholic Class	60	35		25
St Gregory's Catholic Class	30	26		4
TOTAL	458	335	0	123
Southport				
Birkdale Class	60	56		4
Bishop D Sheppard CE Class	60+42 2 yr old places	74		28
Churchtown Class	60	40		20
Farnborough Road Class	120	84		36
Kew Woods Class	60	49		11
Kings Meadow Class	60	40		20
Linaker Class	60	60		0
Our Lady of Lourdes Catholic Class	60	49		11
St Teresa's Catholic Class	60	49		11
Crossens School	80	61		19
TOTAL	722	562	0	160
GRAND TOTALS	3,124	2,289	0	835

ANNEX 4

DENOMINATIONAL PROVISION

THE CATHOLIC CHURCH Archdiocese of Liverpool

It is the policy of the Archdiocese to provide for every Baptised Catholic pupil a place within a Primary and Secondary school.

This provision is based on a parish network and each parish has a designated Primary and Secondary school which serves it.

This principle of provision for all Baptised Catholic pupils is reflected usually in the second Admission Criterion of each school in the Archdiocese.

Catholic Archdiocese of Liverpool

Parish Network within the Sefton LEA with Designated Primary and Secondary Schools

Table 1 Southport

Parish	Primary School	Secondary School
Holy Family Our Lady of Lourdes Sacred Heart St John Stone St Joseph St Marie St Patrick St Teresa	Holy Family Our Lady of Lourdes Our Lady of Lourdes Our Lady of Lourdes 1. St Teresa's Infant 2. Our Lady of Lourdes St Patrick's St Patrick's 1. St Teresa's Infant 2. Our Lady of Lourdes	Christ the King

Table 2 Maghull & Aintree

Parish	Primary School	Secondary School
Holy Rosary St George St Gregory Our Lady's St Kentigern	Holy Rosary St George's 1. St John Bosco 2. St Gregory's 1. St John Bosco 2. St Gregory's Holy Rosary	Maricourt

Table 3 Netherton

Parish	Primary School	Secondary School
Our Lady of Walsingham St Benet Holy Spirit	Our Lady of Walsingham St Benedict's Holy Spirit	St Ambrose Barlow

Table 4 Crosby

Parish	Primary School	Secondary School
St Edmund SS Peter and Paul St Thomas St Helen St Joseph	St Edmund's Great Crosby St Edmund's 1. Great Crosby 2. Ursuline Ursuline	Sacred Heart

Table 5 Bootle

Parish	Primary School	Secondary School
St Joan St James St Monica St Richard St Winefride St Robert Bellarmine	All Saints All Saints St Monica's St Robert Bellarmine	Savio

Table 6 Formby, Little Crosby, Thornton

Parish	Primary School	Secondary School
St William of York Our Lady of Compassion St Jerome St Anne The Holy Family Our Lady of Victories St Mary's	St William of York Our Lady of Compassion St Jerome's Our Lady of Compassion St Mary's St Mary's St Mary's	Holy Family

Table 7 Litherland

Parish	Primary School	Secondary School
English Martyrs Our Lady Queen of Peace St Elizabeth Our Lady Star of the Sea	English Martyrs Our Lady Queen of Peace St Elizabeth's Our Lady Star of the Sea	Holy Family (from 1/09/12) Holy Family (from 1/09/12) Savio (from 1/09/12) Savio (from 1/09/12)

ANNEX 5

DENOMINATIONAL PROVISION

THE CHURCH OF ENGLAND Diocese of Liverpool

It is the policy of the Liverpool Diocese to encourage Governing Bodies of Church of England Aided Schools to provide places for children whose parents wish them to have an education within an Anglican framework.

Each school determines its own admissions criteria in consultation with the Diocese and the Local Education Authority.

There is a statutory obligation placed upon the Governing Body to consult the Diocesan Board of Education where significant changes are envisaged. The Diocesan Boards of Education Measure (1991) is the authoritative document in this regard.

Whilst the above Measure has more impact upon voluntary aided schools, both voluntary aided and voluntary controlled schools maintain a close family relationship with the Diocese as well as with the Local Education Authority.

This page is intentionally left blank

The report of Her Majesty's Chief Inspector of
Education, Children's Services and Skills 2013/14

North West regional report

Agenda Item 6



Summary

The quality of educational provision for too many children and young people in the North West remains a postcode lottery. Educational outcomes for children and learners are improving but there is considerable variation within the region and across the sectors. In particular, there are too many secondary schools that simply are not good enough. The impact on the poorest and most disadvantaged children is the biggest cause for concern. There are no local authorities that deliver entirely good or outstanding levels of provision across both the education and care sectors.

White British young people from poor families get a particularly raw deal. Children who are in the care system tend to get the worst deal of all. These children achieve poor outcomes from the start of their educational journey, and the gap between them and other children widens as they progress through the system. As a result, many poor families and disadvantaged children fall into a cycle of inter-generational educational failure.

Effective system leadership across all sectors is needed to break this cycle of educational failure; however, too often this is absent or uncoordinated. System leaders are drawn from many disparate groups including local authorities, academy trusts, the National College for Teaching and Leadership, teaching schools, colleges and national/local leaders of education (NLEs/LLEs). Some system leaders in the region are making an outstanding contribution to school improvement in the most disadvantaged areas. These leaders are working hard to extend the efficacy of school-to-school support more broadly. However, there are too few outstanding leaders and teachers in the areas where they are most needed. It is rare to find system leaders working together effectively in the areas of significant challenge. There is little evidence that they are making a tangible difference to date. However, signs of improvement are beginning to show in some areas, for example in parts of Knowsley and Halton.

State of the region

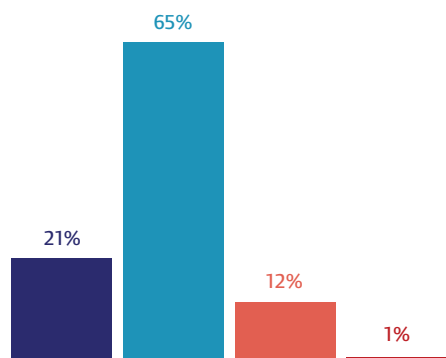
1. Although strong leadership is not found consistently across the region, there are instances of good practice. For example, children have a greater chance of attending a good or outstanding primary school than their peers nationally because of good leadership. However, this is not the case when we look at secondary schools. Leadership in colleges has improved and a high proportion of them provide a good or outstanding level of education.
2. There remains too much variation in the quality of leadership in schools across the North West. Stockport has the highest percentage of leadership and management judged as good or outstanding, at 92%, followed closely by Trafford (91%) and Cheshire East (90%). These contrast with Blackburn with Darwen (80%) and Oldham (79%), where leadership is judged weakest.
3. Not all system leaders are working well enough to support regional improvement because several schools and local authorities remain beset by underperformance. Communication and coordination of effort between the different organisations working to raise standards in schools require improvement. The region has a number of teaching schools and NLEs/ LLEs but these are simply too few in the areas where they are most needed, such as rural and coastal towns. Not all designated system leaders respond to the needs of the most challenged. Those that do are beginning to have an impact; this needs to extend to other high-profile leaders.
4. There is a risk of unchecked expansion of multi-academy trusts. Some have taken on a number of failing schools but, as yet, are unable to evidence that they are bringing about sustained improvement.

Early years

5. Children are not supported well enough in their early years, particularly those who live in poverty and areas of deprivation. Less than half the children in Halton and Blackburn with Darwen reach a good level of development at the end of the Early Years Foundation Stage. Lancashire, Wirral, St Helens and Stockport are among seven local authorities that provide better opportunities for their youngest children, with more than 60% reaching this standard. This level of achievement, however, is still not good enough for our children. Boys do less well than girls in many areas. For example, in Blackpool, Knowsley, Salford, Sefton and Tameside, girls outperform boys by approximately 20 percentage points.
6. Across local authorities, the gap between the achievement of disadvantaged children living in poverty and their peers is significant. In some areas, for example Manchester and Blackburn with Darwen, the gap is small (eight percentage points). However, this is due to low levels of achievement for all children. Some local authorities present high levels of achievement for non-disadvantaged children and so performance are significant. In Trafford, for example, there is a 25 percentage point gap and in Lancashire it is 23 percentage points.

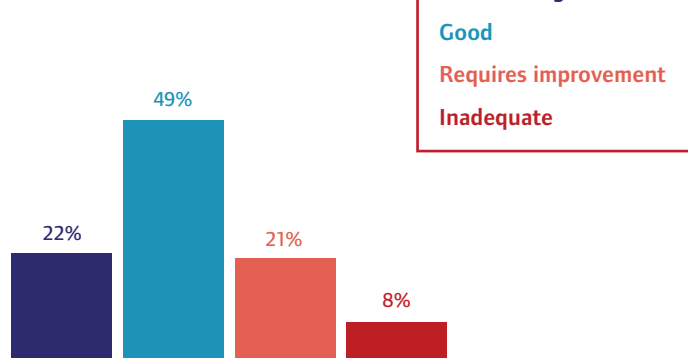
Figure 1: Inspection outcomes by proportion of pupils, children or learners at 31 August 2014

Primary schools



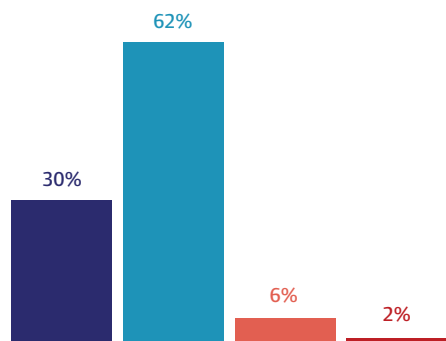
Overall effectiveness of primary schools in the North West, latest inspection outcome at 31 August 2014 (% of pupils).

Secondary schools



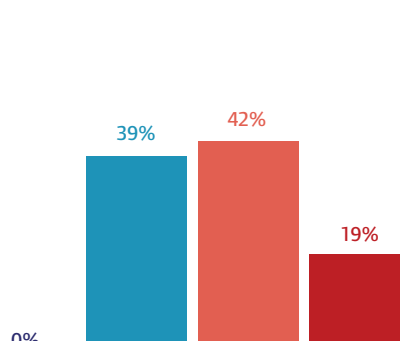
Overall effectiveness of secondary schools in the North West, latest inspection outcome at 31 August 2014 (% of pupils).

Colleges



Overall effectiveness of colleges in the North West, latest inspection outcome at 31 August 2014 (% of learners).

Safeguarding



Effectiveness of local authority safeguarding arrangements in the North West, latest inspection outcome at 31 August 2014 (% of children).



Agenda Item 6

7. The proportion of good or outstanding early years providers in the North West is lower than that seen nationally. Many local authorities have put children's centres at the heart of their early help agenda and have successfully integrated aspects of early childhood services. However, the impact of this varies widely across the region and too many children and their families are not being supported to ensure that they are ready to start school. Most local authorities have recognised the importance of providing two-year-olds from the most disadvantaged families with a good early start, with many parents taking advantage of this offer. The North West has 71 maintained nursery schools attended by over 6,000 children; the vast majority have been judged good or outstanding.

Schools

8. Generally, the quality of primary education in the region is strong: 86% of pupils attend a school that is good or outstanding. Where primary schools have been judged to require improvement they have worked closely with Her Majesty's Inspectors during on-site visits and in seminars and workshops. We have seen an increased proportion of good and outstanding primary schools and a steady rise in standards. However, as is the case in other phases of education, in too many primary schools the gap in attainment between those children eligible for free school meals and their peers remains too large. This means they fall further behind and are not well prepared for the next stage of their education. Outcomes remain weaker in the secondary sector.

Table 1: Percentage of primary and secondary pupils attending good or outstanding schools by local authority in the North West

Primary schools				Secondary schools			
Rank*	Local authority (education)	2014 %	Change from 2013 (% points)	Rank*	Local authority (education)	2014 %	Change from 2013 (% points)
3=	Trafford	96	▲ 3	20=	Bury	91	▼ -3
9=	Stockport	93	▲ 6	20=	Trafford	91	▲ 1
12=	Cheshire East	92	▲ 2	37=	Rochdale	85	▲ 12
24=	St. Helens	89	▬ 0	52=	Stockport	82	▲ 10
30=	Wigan	88	▲ 5	55=	Lancashire	81	▲ 4
30=	Sefton	88	▼ -6	65=	Cheshire West and Chester	78	▼ -4
30=	Wirral	88	▲ 3	65=	Cheshire East	78	▲ 1
30=	Manchester	88	▲ 7	67=	Wigan	77	▼ -3
35=	Cumbria	87	▲ 4	67=	Liverpool	77	▼ -4
35=	Lancashire	87	▲ 6	67=	Halton	77	▲ 20
35=	Bolton	87	▲ 1	67=	Knowsley	77	▲ 26
45=	Cheshire West and Chester	86	▲ 5	102=	Wirral	69	▼ -2
45=	Halton	86	▲ 6	105=	Cumbria	68	▲ 5
45=	Liverpool	86	▲ 1	105=	Blackburn with Darwen	68	▬ 0
56=	Knowsley	85	▼ -3	105=	Warrington	68	▼ -8
60=	Bury	84	▲ 4	116=	Manchester	64	▲ 2
60=	Salford	84	▲ 9	116=	Bolton	64	▼ -5
60=	Warrington	84	▲ 5	121=	Salford	59	▲ 12
68=	Rochdale	83	▬ 0	127=	Sefton	55	▼ -1
68=	Blackburn with Darwen	83	▲ 1	138	Tameside	49	▲ 3
79=	Blackpool	81	▲ 5	145	Blackpool	38	▼ -8
91=	Oldham	80	▲ 3	147	Oldham	36	▼ -21
91=	Tameside	80	▲ 8	148=	St. Helens	35	▼ -12

* Rank refers to the 2014 placing in relation to all 150 local authorities in England (excluding Isles of Scilly and City of London, which each contain only one school).

Data includes inspection outcomes for the predecessor schools for converter academies. Outcomes for sponsor-led academies are included once the school has been inspected as an academy.

9. The proportion of pupils attending a good or outstanding primary school is lowest in Tameside, Oldham and Blackpool. Blackpool and Oldham, along with St Helens, are also poor at secondary level. Trafford is one of the region's strongest performers in both phases (see Table 1). There are signs of improvement in primary schools but the picture in the secondary sector is more mixed.
10. Outcomes for the most disadvantaged children are too low at most key stages and this remains an important area for improvement. The gap in attainment between pupils eligible for free school meals and their peers remains a major concern, with Stockport and Cheshire East showing the widest gap in achievement at Key Stage 4 (see Table 2). Educational achievement is left to chance for too many children. In areas like Blackpool, the cycle of deprivation and low aspiration continues to lead to low achievement at secondary level.

Table 2: FSM/non-FSM gap at Key Stage 4 (2012/13)

Local authority	Percentage of students achieving at least five GCSEs A* to C including English and mathematics		
	FSM students	Non-FSM students	FSM/Non-FSM 'gap'
Blackburn with Darwen	39.4	64.3	-24.9
Blackpool	25.8	51.8	-26.0
Bolton	39.9	65.4	-25.5
Bury	41.3	65.8	-24.5
Cheshire East	26.4	65.8	-39.4
Cheshire West and Chester	30.6	66.8	-36.2
Cumbria	25.9	60.0	-34.1
Halton	44.1	70.5	-26.4
Knowsley	26.0	52.3	-26.3
Lancashire	31.4	65.6	-34.2
Liverpool	34.7	64.8	-30.1
Manchester	40.4	59.7	-19.3
Oldham	39.8	61.8	-22.0
Rochdale	39.5	61.9	-22.4
Salford	35.7	60.3	-24.6
Sefton	36.8	65.2	-28.4
St. Helens	31.5	60.4	-28.9
Stockport	33.6	70.0	-36.4
Tameside	38.7	64.3	-25.6
Trafford	41.8	74.7	-32.9
Warrington	34.6	68.9	-34.3
Wigan	36.1	68.3	-32.2
Wirral	37.6	72.4	-34.8
North West	35.5	65.0	- 29.5
England	38.1	64.8	-26.7

Source: Local authority interactive tool, Department for Education; www.gov.uk/government/publications/local-authority-interactive-tool-lait. All attainment and progress data is provisional data for 2013, unless otherwise specified.

Agenda Item 6

11. Too many of the more able students underperform at secondary school. Of the 23 local authorities in the North West, 13 are below the national level for the percentage of children achieving at least Level 5 at Key Stage 2 in English and mathematics. The proportion subsequently attaining A* or A at GCSE is very low in some areas, particularly Knowsley, Salford and Blackpool (see Table 3).

Table 3: Percentage of pupils achieving Level 5+ at Key Stage 2 who subsequently achieve A* or A at GCSE 2012/13

Local authority	%	
	Mathematics	English
Blackburn with Darwen	47%	41%
Blackpool	27%	28%
Bolton	43%	34%
Bury	44%	40%
Cheshire East	49%	45%
Cheshire West and Chester	52%	50%
Cumbria	47%	36%
Halton	40%	47%
Knowsley	28%	18%
Lancashire	51%	45%
Liverpool	42%	40%
Manchester	38%	42%
Oldham	41%	32%
Rochdale	46%	31%
Salford	33%	30%
Sefton	42%	42%
St. Helens	40%	38%
Stockport	48%	46%
Tameside	38%	38%
Trafford	62%	48%
Warrington	47%	52%
Wigan	47%	50%
Wirral	54%	51%
North West	46%	42%
England	50%	43%

Source: RAISEonline

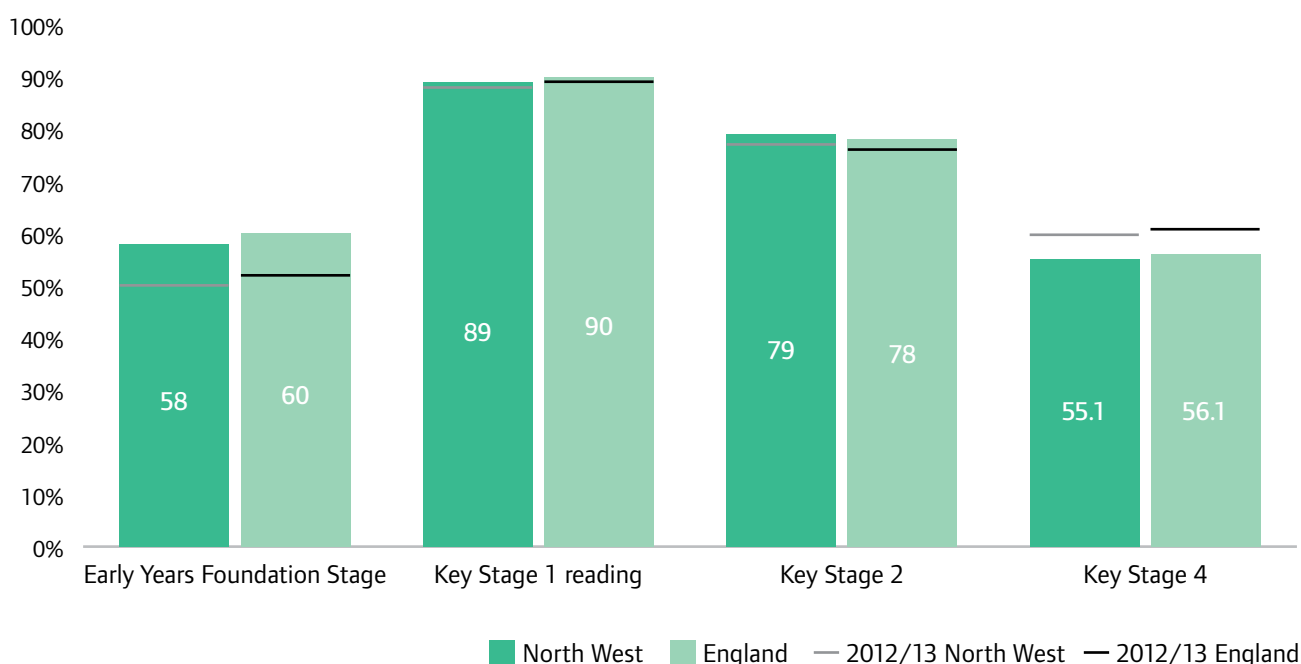
12. In too many schools, low-level disruption and misbehaviour has a detrimental effect on learning. We will continue to focus on this area. Blackpool (50%) and Oldham (42%) have a high percentage of secondary schools where behaviour has been judged as less than good when compared with the England level of 15%. Knowsley (13.9%) has just over twice the national level (6.8%) of secondary school fixed-term exclusions, closely followed by Tameside (11.8%) and Blackpool (11.5%).

13. Although the number of academies in the North West has grown in recent years (see Table 4), the region has the lowest proportion of academies nationally at just 11% compared with 20% for England as a whole. The rate of academisation varies between local authorities: while 46% of the 41 schools in Blackpool are academies, just 3% of the 70 schools in St Helens, 4% of the 90 schools in Rochdale and 4% of the 84 schools in Bury are academies.
14. The increase in the number of secondary academies has not yet made a significant enough difference to student performance across the region. For example, in Cumbria, the sponsored academies continue to underperform. Multi-academy trusts have not yet had enough impact in raising standards.
15. Too often, students leave secondary school having not made the progress of which they were capable. Key Stage 4 performance was particularly weak in Knowsley, Blackpool and Salford but stronger in Wirral, Cheshire East and Trafford. The attainment of disadvantaged students in secondary schools is particularly weak in Blackpool, Cumbria and Knowsley. It is strongest in Halton.

Table 4: Number of primary and secondary schools that are academies in the North West

Year	2009/10	2010/11	2011/12	2012/13	2013/14
Number of primary academies	0	11	44	91	138
Number of secondary academies	26	89	142	183	205

Figure 2: Pupil attainment at ages five, seven, 11 and 16



Data for 2014 is provisional

Benchmark levels: Early Years Foundation Stage – achieving a good level of development (%)

Key Stage 1 – achieving at least Level 2 in reading (%)

Key Stage 2 – achieving at least Level 4 in reading, writing and mathematics (%)

Key Stage 4 – achieving at least five GCSEs at grades A* to C or equivalent, including English and mathematics (%)

All attainment and progress data is provisional data for 2013/14 unless otherwise specified.

Source: *Local authority interactive tool*, Department for Education; www.gov.uk/government/publications/local-authority-interactive-tool-lait.

Explore how children and young people performed in assessments and tests at different ages and in different regions through our online regional performance tool; <http://dataview.ofsted.gov.uk/regional-performance>



Further education and skills

16. Further education and skills provision is strong in the North West. More than 330,000 learners attend colleges in the region. The region has over 200,000 learners in private training and community learning and skills providers. Ninety per cent of provision is judged to be good or outstanding, which is significantly higher than the England level of 81%. The North West has seen a deterioration in the overall effectiveness of one large general further education college from outstanding to inadequate. The weakest colleges and training providers are concentrated around Greater Merseyside.
17. Despite improvements in the quality of teaching, concerns remain about the quality of the curriculum on offer. For example, too few learners by the age of 19 achieve a level 2 qualification in English and mathematics (65%). This figure varies considerably across local authorities: in Blackpool and Manchester it is 53% and 55%, respectively, whereas in Trafford it is 77%.
18. The underachievement of disadvantaged groups and those from deprived backgrounds is of concern. Less than half (40%) of the region's learners who were previously eligible for free school meals achieved level 2 qualifications in English and mathematics by age 19.
19. In the 2012/13, North West regional report, we identified that apprenticeship success rates in several North West providers were poor and targeted them for improvement. There have been some advances, including an increase in the proportion of students achieving their apprenticeship in 15 of the 19 targeted providers. However, the rate of improvement is inconsistent and must be addressed urgently.

Social care

20. No local authorities in the North West have been judged as outstanding for either child protection, or the services they provide for children in their care (see Figure 1). Of the five local authorities inspected under the new single inspection framework, completed by 31 August 2014, Bolton, Blackpool and Liverpool require improvement. Knowsley and Manchester have been judged inadequate. Of the 18 local authorities that were last inspected under the safeguarding and looked after children or child protection framework, eight were judged to be good, seven were judged to be adequate, and three were judged to be inadequate – Cheshire East, Cumbria and Rochdale.
21. Of the 459 children's homes inspected during 2013/14, 354 were good or outstanding, nine were inadequate and 96 were judged as requires improvement (previously described as adequate).
22. Ofsted will be publishing its Social Care Annual Report in spring 2015. This will set out the challenges for the sector and the priorities for improvement. For this reason we have not addressed the social care issues for the region in any detail in this report.

Regional priorities

23. As a result of the failure of many providers to address the educational underachievement of the most disadvantaged in society, particularly in the secondary phase, we have implemented a targeted programme to support improvement. Most local authorities recognise the value of this programme and have engaged with us in the improvement agenda. For example, Wigan, Cumbria, Salford, Stockport and Cheshire East have all worked extensively in partnership with Her Majesty's Inspectors over the last 12 months. A comprehensive cross-remit programme began in the region with the advent of 'Getting to good' and 'Through the lens' seminars. Focused inspections of Cumbria, Salford and Tameside directed attention to the areas where improvements are most needed.
24. We will continue to carry out unannounced inspections, particularly in schools where there are concerns about: pupils' spiritual, moral, social and cultural development; curriculum; and behaviour.
25. There has been an increase in the proportion of children and young people in good primary schools and colleges. Progress in secondary schools and early childhood providers has been slower in the region. We will continue to hold providers firmly to account for improving outcomes and focus on the areas of greatest concern.
26. If we are to see major change in the region, then the academisation of schools and the establishment of multi-academy trusts need to have a greater impact on improving the prospects for all children, especially the most disadvantaged. The impact of local authority support in secondary schools must improve and demonstrate more rapid progress.
27. The strong system leaders and teaching schools in the region, and the National College for Teaching and Leadership, need to develop effective strategies to maximise their impact on the most vulnerable schools and local authorities. This work must be rigorously quality assured to ensure value for money and impact on outcomes for young people. All designated system leaders must rise to the challenge of improving schools in the most difficult circumstances.
28. Ofsted will make it a priority to continue to work with providers, through inspection, to improve the quality of care so that children who are looked after by the local authority are able to live in good children's homes and succeed at school.

Agenda Item 6

The Office for Standards in Education, Children's Services and Skills (Ofsted) regulates and inspects to achieve excellence in the care of children and young people, and in education and skills for learners of all ages. It regulates and inspects childcare and children's social care, and inspects the Children and Family Court Advisory Support Service (Cafcass), schools, colleges, initial teacher training, work-based learning and skills training, adult and community learning, and education and training in prisons and other secure establishments. It assesses council children's services, and inspects services for looked after children, safeguarding and child protection.

If you would like a copy of this document in a different format, such as large print or Braille, please telephone 0300 123 1231, or email enquiries@ofsted.gov.uk.

You may reuse this information (not including logos) free of charge in any format or medium, under the terms of the Open Government Licence. To view this licence, visit www.nationalarchives.gov.uk/doc/open-government-licence/, write to the Information Policy Team, The National Archives, Kew, London TW9 4DU, or email: psi@nationalarchives.gsi.gov.uk.

This publication is available at www.ofsted.gov.uk/resources/140186.

To receive regular email alerts about new publications, including survey reports and school inspection reports, please visit our website and go to 'Subscribe'.

Piccadilly Gate
Store Street
Manchester
M1 2WD

T: 0300 123 1231
Textphone: 0161 618 8524
E: enquiries@ofsted.gov.uk
W: www.ofsted.gov.uk

No. 140186

© Crown copyright 2014

Report to: Overview and Scrutiny Committee **Date of Meeting:** 27 January 2015
(Children's Services)

Subject: Cabinet Member Report

Report of: Director of Corporate Services

Wards Affected: All

Is this a Key Decision? No

Is it included in the Forward Plan? No

Exempt/Confidential No

Purpose/Summary

To submit to the Overview and Scrutiny Committee a recent Cabinet Member report.

Recommendation

That the report be noted.

How does the decision contribute to the Council's Corporate Objectives?

	<u>Corporate Objective</u>	<u>Positive Impact</u>	<u>Neutral Impact</u>	<u>Negative Impact</u>
1	Creating a Learning Community	√		
2	Jobs and Prosperity		√	
3	Environmental Sustainability		√	
4	Health and Well-Being		√	
5	Children and Young People	√		
6	Creating Safe Communities		√	
7	Creating Inclusive Communities		√	
8	Improving the Quality of Council Services and Strengthening Local Democracy	√		

Reasons for the Recommendation:

In order to keep Overview and Scrutiny Members informed, the Overview and Scrutiny Management Board has agreed that relevant Cabinet Member reports should be submitted to appropriate Overview and Scrutiny Committees, with the agreement of Chairs.

What will it cost and how will it be financed? N/A

Implications:

The following implications of this proposal have been considered and where there are specific implications, these are set out below:

Agenda Item 7

Legal	
Human Resources	
Equality	<input checked="" type="checkbox"/>
1. No Equality Implication	<input type="checkbox"/>
2. Equality Implications identified and mitigated	<input type="checkbox"/>
3. Equality Implication identified and risk remains	<input type="checkbox"/>

Impact on Service Delivery: N/A

What consultations have taken place on the proposals and when?

The Head of Corporate Finance and ICT has no comments on this report because the contents of the report have no direct financial implications.
(FD 3388/15)

The Head of Corporate Legal Services has no comments on this report.
(LD 2680/15)

Are there any other options available for consideration?

No.

Implementation Date for the Decision

Immediately following the Committee meeting.

Contact Officer: Mike Morris
Tel: 0151 934 2045
Email: mike.morris@sefton.gov.uk

Background Papers:

There are no background papers available for inspection.

1. Introduction/Background

- 1.1 In order to keep Overview and Scrutiny Members informed, the Overview and Scrutiny Management Board has agreed that relevant Cabinet Member reports should be submitted to appropriate Overview and Scrutiny Committees.
- 1.2 Attached to this report, for information, is the most recent Cabinet Member report for January 2015 for the Children, Schools, Families and Leisure portfolio that falls within the remit of this Committee.

2. Recent Developments

- 2.1 At its meeting on 30 August 2011, the Overview and Scrutiny Management Board proposed that, in future, Cabinet Member reports will be published on the Modern Gov library and an e-mail alert will be sent to Scrutiny Chairs. In the event that Chairs identify any issues they would like to raise for discussion at their next Overview and Scrutiny Committee, they should alert the appropriate officer and this will enable appropriate officer attendance at that meeting.
- 2.2 The Cabinet Member update report attached was provided to the Chair of the Committee on its availability. The Chair has indicated that he would wish the update report to be included on the agenda, for general information purposes for Committee Members.

This page is intentionally left blank

CABINET MEMBER UPDATE REPORT Overview & Scrutiny (Children’s Services) Tuesday 27 January 2015, 6.30 pm		
Councillor	Portfolio	Period of Report
Ian Moncur	Children, Schools & Families	January 2015

LEARNING SUPPORT SERVICE Head of Service, Mike McSorley

- Hillside and Litherland High Schools conversion to sponsored Academies

Hillside and Litherland High Schools will become sponsored academies on 1 March 2015. The schools were put into an Ofsted category at their last inspection and the Secretary of State has made the academy orders to convert the schools into sponsored academies.

- KGV Performance

A Sixth Form College Commissioner assessment of the college was triggered by an inadequate Ofsted grading following inspection in September 2014. This is in line with the intervention policy for sixth form colleges outlined in “Rigour and Responsiveness”. The purpose is to assess the capacity of the current leadership and governance team to lead the college back to an Ofsted rating of good or better at the point of re-inspection. A report has been commissioned by the National Director for Young People at the EFA and as part of the improvement process regular case conferences will be held with stakeholders and the Local Authority have been invited to be involved in these meetings.

- Education and Skills Strategy

A Draft Education and Skills Strategy has been developed which is due to go out to consultation with stakeholders in January. The strategy will set out the vision for how all stakeholders will work together to ensure all children and young people in Sefton are equipped with the knowledge, skills and desire to fulfil their potential.

- NW Regional Ofsted Report

The Ofsted Chief Inspector’s report for the NW Region was published in December. Sefton did not receive any specific praise or criticism in the report but the risk of inspection can be considered to be high given the number of secondary schools which are not good or better and the differential between primary and secondary inspection outcomes. This is the subject of an ongoing Overview and Scrutiny review.

This page is intentionally left blank

Agenda Item 8

Report to: Overview and Scrutiny Committee **Date of Meeting:** 27 January 2015
(Children's Services)

Subject: Work Programme-Key Decision Forward Plan (1February to 31 May 2015)

Report of: Director of Corporate Services

Wards Affected: All

Is this a Key Decision? No

Is it included in the Forward Plan? No

Exempt/Confidential

No

Purpose/Summary

To submit to the Overview and Scrutiny Committee the latest Key Decision Forward Plan and Work Programme.

Recommendations

1. The Committee is invited to consider the item for pre-scrutiny from the attached Key Decision Forward Plan.
2. The Committee's instructions in relation to the draft work programme document are requested.
3. The views of the Committee are requested on the possible inclusion of Alder Hey Children's Hospital NHS Trust in the draft relevant joint working protocol.
4. The Committee is requested to approve the replacement of Councillor Hartill with Councillor Ball on the School Performance Working Group.

How does the decision contribute to the Council's Corporate Objectives?

	<u>Corporate Objective</u>	<u>Positive Impact</u>	<u>Neutral Impact</u>	<u>Negative Impact</u>
1	Creating a Learning Community		√	
2	Jobs and Prosperity		√	
3	Environmental Sustainability		√	
4	Health and Well-Being		√	
5	Children and Young People	√		
6	Creating Safe Communities		√	
7	Creating Inclusive Communities	√		
8	Improving the Quality of Council Services and Strengthening Local Democracy	√		

Agenda Item 8

Reasons for the Recommendations:

The pre-scrutiny process assists the Cabinet and Cabinet Members to make effective decisions by examining issues beforehand and making recommendations prior to a determination being made.

Any work programme topics should be chosen to demonstrate that the work which scrutiny undertakes will add value to the Council.

What will it cost and how will it be financed?

N/A

Implications:

The following implications of this proposal have been considered and where there are specific implications, these are set out below:

Legal: There are no legal implications arising from the contents of this report.	
Human Resources	
Equality	
1. No Equality Implication	<input checked="" type="checkbox"/>
2. Equality Implications identified and mitigated	<input type="checkbox"/>
3. Equality Implication identified and risk remains	<input type="checkbox"/>

Impact on Service Delivery:

N/A

What consultations have taken place on the proposals and when?

The Head of Corporate Finance and ICT has no comments on this report because the contents of the report have no financial implications (FD 3389/15).

The Head of Corporate Legal Services has no comments on this report because the contents of the report have no legal implications (LD 2681/15).

Are there any other options available for consideration?

No

Implementation Date for the Decision

Immediately following the Committee meeting.

Contact Officer: Mike Morris
Tel: 0151 934 2045
Email: mike.morris@sefton.gov.uk

Background Papers:

There are no background papers available for inspection.

1. KEY DECISION FORWARD PLAN

- 1.1 Members may request to pre-scrutinise items from the Key Decision Forward Plan. Such items must fall under the remit (Terms of Reference) of this Committee.
- 1.2 The pre-scrutiny process assists the Cabinet and Cabinet Members to make effective decisions by examining issues beforehand and making recommendations prior to a determination being made.
- 1.3 The Overview and Scrutiny Management Board has requested that only those Key Decisions which fall under the remit of each Overview and Scrutiny Committee should be included on the agenda for consideration.
- 1.4 The latest Forward Plan is attached at **Appendix A**.
- 1.5 There is one item within the current Plan which falls within the remit of this Committee, namely Children's Transport Policies.
- 1.6 If Members require further information in relation to this item, they are advised to contact the officer named in the Plan, prior to the meeting.
- 1.7 ***The Committee is invited to consider the item for pre-scrutiny from the attached Key Decision Forward Plan.***

2. WORK PROGRAMME TOPICS 2014/15

2.1 To assist the Committee, the attached draft work programme document for 2014/15 (Appendix B) has been prepared and Members are invited to comment on this, if appropriate.

3. JOINT WORKING PROTOCOLS

3.1 At its meeting on 6 January 2015, the Overview and Scrutiny Committee (Health and Social Care) considered draft joint working protocols between that Committee and other local health bodies, in response to the document produced by the Department of Health entitled "Local Authority Health Scrutiny: Guidance to Support Local Authorities and their Partners to deliver Effective Health Scrutiny" and in order to demonstrate that clear understanding on respective roles between the health scrutiny function and other health bodies existed in Sefton.

3.2 In considering the draft protocol between the Committee and NHS organisations in Sefton and surrounding areas that provide services to residents of Sefton, a Member of the Committee suggested that Alder Hey Children's Hospital NHS Trust might be included within the protocol. Members of the Committee discussed the possibility of holding an informal meeting of the Committee to discuss future agenda items and the focus of this Committee.

3.3 The Committee resolved that "the Senior Democratic Services Officer be authorised to seek guidance from the Overview and Scrutiny Committee (Children's Services) on

Agenda Item 8

the possible inclusion of Alder Hey Children's Hospital NHS Trust in the draft relevant protocol”.

3.4 *The views of the Committee are requested.*

5. SCHOOL PERFORMANCE WORKING GROUP

5.1 The Conservative Group has indicated that it wishes to replace Councillor Hartill with Councillor Ball on the School Performance Working Group.

4.2 *The Committee is requested to approve this change of membership.*



SEFTON METROPOLITAN BOROUGH COUNCIL FORWARD PLAN

FOR THE FOUR MONTH PERIOD 1 FEBRUARY 2015 - 31 MAY 2015

This Forward Plan sets out the details of the key decisions which the Cabinet, individual Cabinet Members or Officers expect to take during the next four month period. The Plan is rolled forward every month and is available to the public at least 28 days before the beginning of each month.

A Key Decision is defined in the Council's Constitution as:

1. any Executive decision that is not in the Annual Revenue Budget and Capital Programme approved by the Council and which requires a gross budget expenditure, saving or virement of more than £100,000 or more than 2% of a Departmental budget, whichever is the greater;
2. any Executive decision where the outcome will have a significant impact on a significant number of people living or working in two or more Wards

As a matter of local choice, the Forward Plan also includes the details of any significant issues to be initially considered by the Executive Cabinet and submitted to the Full Council for approval.

Anyone wishing to make representations about any of the matters listed below may do so by contacting the relevant officer listed against each Key Decision, within the time period indicated.

Under the Access to Information Procedure Rules set out in the Council's Constitution, a Key Decision may not be taken, unless:

- it is published in the Forward Plan;
- 5 clear days have lapsed since the publication of the Forward Plan; and
- if the decision is to be taken at a meeting of the Cabinet, 5 clear days notice of the meeting has been given.

The law and the Council's Constitution provide for urgent key decisions to be made, even though they have not been included in the Forward Plan in accordance with Rule 26 (General Exception) and Rule 28 (Special Urgency) of the Access to Information Procedure Rules.

Copies of the following documents may be inspected at the Town Hall, Oriel Road, Bootle L20 7AE or accessed from the Council's website: www.sefton.gov.uk

- Council Constitution
- Forward Plan
- Reports on the Key Decisions to be taken
- Other documents relating to the proposed decision may be submitted to the decision making meeting and these too will be made available by the contact officer named in the Plan
- The minutes for each Key Decision, which will normally be published within 5 working days after having been made

Agenda Item 8

Appendix A

Some reports to be considered by the Cabinet/Council may contain exempt information and will not be made available to the public. The specific reasons (Paragraph No(s)) why such reports are exempt are detailed in the Plan and the Paragraph No(s) and descriptions are set out below:-

1. Information relating to any individual
2. Information which is likely to reveal the identity of an individual
3. Information relating to the financial or business affairs of any particular person (including the authority holding that information)
4. Information relating to any consultations or negotiations, or contemplated consultations or negotiations in connection with any labour relations matter arising between the authority or a Minister of the Crown and employees of, or office holders under, the Authority
5. Information in respect of which a claim to legal professional privilege could be maintained in legal proceedings
6. Information which reveals that the authority proposes a) to give under any enactment a notice under or by virtue of which requirements are imposed on a person; or b) to make an order or direction under any enactment
7. Information relating to any action taken or to be taken in connection with the prevention, investigation or prosecution of crime
8. Information falling within paragraph 3 above is not exempt information by virtue of that paragraph if it is required to be registered under—
 - (a) the Companies Act 1985;
 - (b) the Friendly Societies Act 1974;
 - (c) the Friendly Societies Act 1992;
 - (d) the Industrial and Provident Societies Acts 1965 to 1978;
 - (e) the Building Societies Act 1986; or
 - (f) the Charities Act 1993.
9. Information is not exempt information if it relates to proposed development for which the local planning authority may grant itself planning permission pursuant to regulation 3 of the Town and Country Planning General Regulations 1992
10. Information which—
 - (a) falls within any of paragraphs 1 to 7 above; and
 - (b) is not prevented from being exempt by virtue of paragraph 8 or 9 above, is exempt information if and so long, as in all the circumstances of the case, the public interest in maintaining the exemption outweighs the public interest in disclosing the information.

Members of the public are welcome to attend meetings of the Cabinet and Council which are held at the Town Hall, Oriel Road, Bootle or the Town Hall, Lord Street, Southport. The dates and times of the meetings are published on www.sefton.gov.uk or you may contact the Democratic Services Section on telephone number 0151 934 2068.

NOTE:

For ease of identification, items listed within the document for the first time will appear shaded.

Margaret Carney
Chief Executive

FORWARD PLAN INDEX OF ITEMS

Item Heading	Officer Contact	Page No
Children's Transport Policies	Mike McSorley mike.mcsorley@sefton.gov.uk Tel: 0151 934 4247	4
School Performance Review - Recommendations	Mike Morris mike.morris@sefton.gov.uk	5
Adult Social Care Change Programme	Jan McMahon jan.mcmahon@sefton.gov.uk Tel: 0151 934 4431	6
Fees and Charges for the Council	Jeff Kenah jeff.kenah@sefton.gov.uk Tel: 0151 934 4104	8
Public Health Annual Report	Matthew Saunders matthew.saunders@sefton.gov.uk Tel: 0151 934 3243	9
Pay Policy	Mark Dale mark.dale@sefton.gov.uk Tel: 0151 934 3949	11
Disposal of Surplus Council-Owned Land	Ingrid Berry ingrid.berry@sefton.gov.uk Tel: 0151 934 3556	12
Three Year Budget Plan 2014/15 - 2016/17	Margaret Rawding margaret.rawding@sefton.gov.uk Tel: 0151 934 4082	14
Three Year Budget Plan 2014/15 - 2016/17	Margaret Rawding margaret.rawding@sefton.gov.uk Tel: 0151 934 4082	15
Designation of Maghull Parish as a Neighbourhood Development Plan Area	Ingrid Berry ingrid.berry@sefton.gov.uk Tel: 0151 934 3556	16
Designation of Melling Neighbourhood Development Plan Area	Ingrid Berry ingrid.berry@sefton.gov.uk Tel: 0151 934 3556	18
Crosby Town Centre Investment Strategy	Andrew Hall andrew.hall@sefton.gov.uk Tel: 0151 934 3604	20
Property Search Litigation	Peter Cowley peter.cowley@sefton.gov.uk Tel: 0151 934 2250	22
Town Centres Working Group - Final Report	Ruth Harrison ruth.harrison@sefton.gov.uk Tel: 0151 934 2042	24
Southport Coastal Communities Fund	Mark Catherall mark.catherall@sefton.gov.uk Tel: 0151 934 3455	26

SEFTON METROPOLITAN BOROUGH COUNCIL FORWARD PLAN

Agenda Item 8

Appendix A

Details of Decision to be taken	Children's Transport Policies Conisderation of Children's transport policies and seek approval for consultation as appropriate			
Decision Maker	Cabinet			
Decision Expected	5 Feb 2015 Decision due date for Cabinet changed from 15/01/2015 to 05/02/2015. Reason: To enable further consultation to be undertaken with the Cabinet Member - Children, Schools, Family and Leisure			
Key Decision Criteria	Financial	Yes	Community Impact	Yes
Exempt Report	Open			
Wards Affected	All Wards			
Scrutiny Committee Area	Children's Services			
Persons/Organisations to be Consulted	None at this stage			
Method(s) of Consultation	None at this stage			
List of Background Documents to be Considered by Decision-maker	Children's Transport Policies			
Contact Officer(s) details	Mike McSorley mike.mcsorley@sefton.gov.uk Tel: 0151 934 4247			

OVERVIEW AND SCRUTINY COMMITTEE (CHILDREN'S SERVICES)

WORK PROGRAMME 2014/15

	23 SEPTEMBER	18 NOVEMBER	27 JANUARY	24 MARCH
Cabinet Member Update Report	X	X	X	X
Work Programme Update	X	X	X	X
Service Operational Reports:				
Troubled Families Programme		X		
School Organisation and School Places			X	
Universal Infant Free School Meals			X	
Ofsted Annual Report			X	
Ofsted Inspection – Early Years Provision and Day Nursery Provision			?	?
Process for Inspection of Registered and Unregistered Homes and Hostels			?	?
Nomination and Assessment Process for Identification of Troubled Families			?	?
Overview and Scrutiny Progress Reports:				
NEET Update	X			X
Final Report – School Performance Working Group				X
Corporate Parenting Board Annual Report	X		X	
Presentations:				
Director of Young People and Families – SEN Reforms		X		
Alder Hey Children's NHS Foundation Trust – Mental Health Provision	X			

This page is intentionally left blank